

Datasheet for ABIN334524
anti-VTCN1 antibody (Internal Region)[Go to Product page](#)

4 Images

Overview

Quantity:	100 µg
Target:	VTCN1
Binding Specificity:	Internal Region
Reactivity:	Human
Host:	Goat
Clonality:	Polyclonal
Conjugate:	This VTCN1 antibody is un-conjugated
Application:	Western Blotting (WB), ELISA, Flow Cytometry (FACS), Immunofluorescence (IF)

Product Details

Purpose:	B7-H4
Immunogen:	Peptide with sequence C-SKGKGNANLEYK, from the internal region of the protein sequence according to NP_078902.2.
Sequence:	SKGKGNANLE YK
Isotype:	IgG
Cross-Reactivity:	Dog, Human, Mouse, Rat
Purification:	Purified from goat serum by ammonium sulphate precipitation followed by antigen affinity chromatography using the immunizing peptide.
Grade:	Verified

Target Details

Target:	VTCN1
Alternative Name:	VTCN1 (VTCN1 Products)
Background:	B7-H4, B7H4, B7S1, B7X, B7h.5, FLJ22418, PRO1291, RP11-229A19.4, VCTN1, T cell costimulatory molecule B7x, immune costimulatory protein, V-set domain containing T cell activation inhibitor 1
Molecular Weight:	30.9kDa
Gene ID:	79679, 242122, 295322
NCBI Accession:	NP_078902 , NP_001240778

Application Details

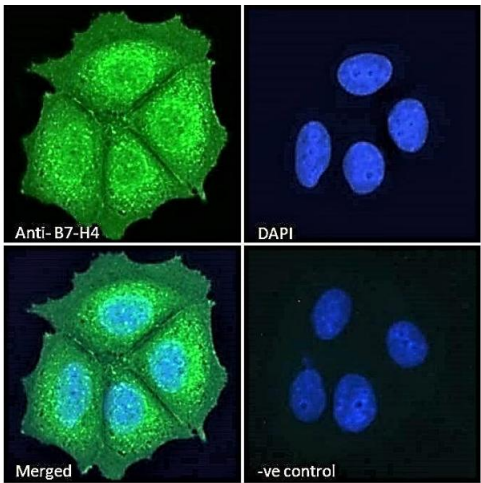
Application Notes:	Western Blot: Approx 26+21 kDa bands observed in HEK293 cell lysates, which were both successfully blocked by incubation with the immunizing peptide. An approx 26 kDa and 21 kDa band observed in Human Adrenal Gland lysates, and approx 27 kDa in Human Pancrea Peptide ELISA: antibody detection limit dilution 1:64000.
Comment:	Immunofluorescence: Strong expression of the protein seen in the cytoplasm and membranes/cell junctions of MCF7 cells. Recommended concentration: 10µg/ml. Flow Cytometry: Flow cytometric analysis of MCF7 cells. Recomme
Restrictions:	For Research Use only

Handling

Format:	Liquid
Concentration:	0.5 mg/mL
Buffer:	Supplied at 0.5 mg/mL in Tris saline, 0.02 % sodium azide, pH 7.3 with 0.5 % bovine serum albumin.
Preservative:	Sodium azide
Precaution of Use:	This product contains Sodium azide: a POISONOUS AND HAZARDOUS SUBSTANCE which should be handled by trained staff only.
Handling Advice:	Minimize freezing and thawing.
Storage:	-20 °C
Storage Comment:	Aliquot and store at -20°C, with minimal freeze/thawing. A working aliquot may be refrigerated

at 4°C for a few weeks and still remain viable.

Images

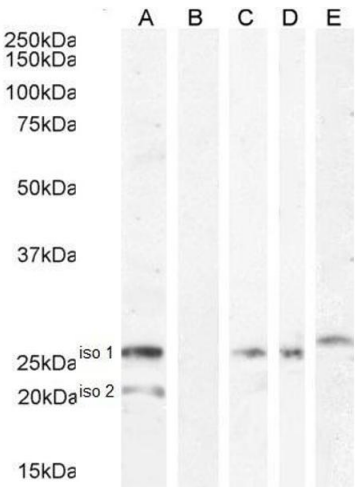


Immunofluorescence

Image 1. ABIN334524 Immunofluorescence analysis of paraformaldehyde fixed MCF7 cells, permeabilized with 0.15% Triton. Primary incubation 1hr (10ug/ml) followed by Alexa Fluor 488 secondary antibody (2ug/ml), showing membrane/cell junction and cytoplasmic staining. The nuclear stain is DAPI (blue). Negative control: Unimmunized goat IgG (10ug/ml) followed by Alexa Fluor 488 secondary antibody (2ug/ml).



Image 2. ABIN334524 (0.3µg/ml) staining of Human Spleen lysate (35µg protein in RIPA buffer). Primary incubation was 1 hour. Detected by chemiluminescence.



Western Blotting

Image 3. ABIN334524 (1ug/ml) staining of HEK293 iso 1 + iso 2 cell lysate (A) + peptide (B). Human Adrenal Gland iso 1 (C), Human Adrenal Gland iso 2 (D) and (0.1µg/ml) Human pancreas iso 1 (E) lysate (35µg protein in RIPA buffer). Detected by chemiluminescence.

Please check the [product details page](#) for more images. Overall 4 images are available for ABIN334524.