

Datasheet for ABIN334557 **anti-EEF1B2 antibody**



[Go to Product page](#)

1 Image

Overview

Quantity:	200 µL
Target:	EEF1B2
Reactivity:	Arabidopsis thaliana, Zea mays
Host:	Rabbit
Clonality:	Polyclonal
Application:	Western Blotting (WB)

Product Details

Immunogen:	Recombinant eEF1B-beta protein from Arabidopsis thaliana with no affinity tag, Q9SI20, At2g18110
Cross-Reactivity (Details):	Not reactive in: no confirmed exceptions from predicted reactivity known in the moment
Predicted Reactivity:	dicots including: Brassica campestris. Pisum sativum, Ricinus communis, monocots including: Hordeum vulgare, Oryza sativa
Characteristics:	Expected / apparent Molecular Weight of the Antigene: 25 / 30 kDa
Purification:	serum

Target Details

Target:	EEF1B2
Alternative Name:	eEF1b (EEF1B2 Products)
Background:	AGI Code: At2g18110 eEF1B-beta protein belongs to a family of elongation factors, proteins which are involved in

Target Details

translational elongation. eEF1B-beta protein is localized in plant cytosol. Alternative names: EF-1-delta 2, elongation factor 1B-beta 2

Molecular Weight: expected: 25 kDa, apparent: 30 kDa

UniProt: [Q9SI20](#)

Application Details

Application Notes: 1: 1000 with standard ECL (WB)

Restrictions: For Research Use only

Handling

Format: Lyophilized

Reconstitution: For reconstitution add 200 µL of sterile water

Handling Advice: Please, remember to spin tubes briefly prior to opening them to avoid any losses that might occur from lyophilized material adhering to the cap or sides of the tubes.
Once reconstituted make aliquots to avoid repeated freeze-thaw cycles.

Storage: -20 °C

Storage Comment: store lyophilized/reconstituted at -20°C, once reconstituted make aliquots to avoid repeated freeze-thaw cycles. Please, remember to spin tubes briefly prior to opening them to avoid any losses that might occur from lyophilized material adhering to the cap or sides of the tubes.

Images

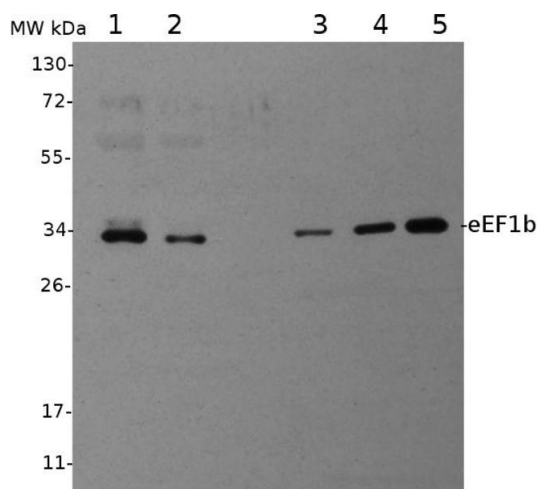


Image 1.