

Datasheet for ABIN334635  
**anti-Abeta 1-42 antibody**



[Go to Product page](#)

2 Images

Overview

Quantity:	100 µL
Target:	Abeta 1-42
Reactivity:	Human
Host:	Rabbit
Clonality:	Polyclonal
Conjugate:	This Abeta 1-42 antibody is un-conjugated
Application:	Western Blotting (WB), ELISA, Dot Blot (DB)

Product Details

Immunogen:	synthetic peptide chosen from human Abeta (1-42) protein. Amino acid sequence: D-A-E-F-R-H-D-S-G-Y-E-V-H-H-Q-K-L-V-F-F-A-E-D-V-G-S-N-K-G-A-I-I-G-L-M-V-G-G-V-V-I-A
Isotype:	IgG
Cross-Reactivity (Details):	Not reactive in: no confirmed exceptions from predicted reactivity known in the moment
Predicted Reactivity:	bovine, chicken, dog, porcine, rabbit
Characteristics:	Expected / apparent Molecular Weight of the Antigene: 4.5 kDa
Purification:	serum

Target Details

Target:	Abeta 1-42
Alternative Name:	Amyloid-beta 42 protein (Abeta (1-42)) ( <a href="#">Abeta 1-42 Products</a> )

## Target Details

---

**Background:** Alzheimer's disease (AD) is the most prevalent neurodegenerative disease in the growing population of elderly people. A hallmark of AD is the accumulation of plaques in the brain of AD patients. The plaques predominantly consist of aggregates of amyloid-beta (Abeta), a peptide of 39-42 amino acids generated in vivo by specific, proteolytic cleavage of the amyloid precursor protein P05067

**Molecular Weight:** 4.5 kDa

## Application Details

---

**Application Notes:** 1:1000 (WB), 1:1000 (Dot), 1:3000 (ELISA)

**Comment:** the antibody can detect Abeta(1-42), Abeta(1-28) Abeta(1-20) and Abeta(1-17)

**Restrictions:** For Research Use only

## Handling

---

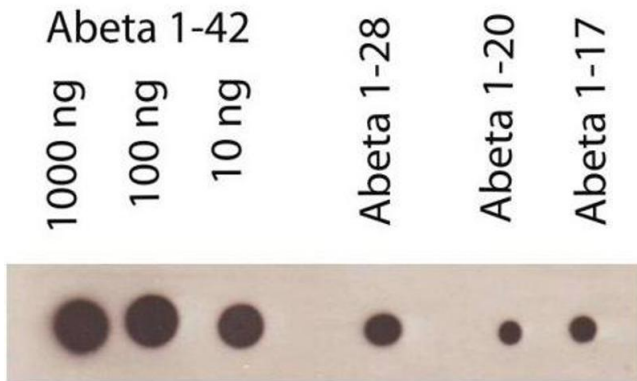
**Format:** Lyophilized

**Reconstitution:** For reconstitution add 100 µL of sterile water

**Handling Advice:** Please, remember to spin tubes briefly prior to opening them to avoid any losses that might occur from lyophilized material adhering to the cap or sides of the tubes.  
Once reconstituted make aliquots to avoid repeated freeze-thaw cycles.

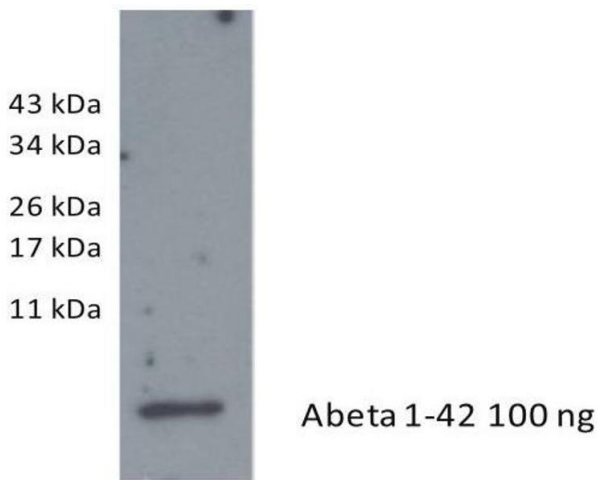
**Storage:** -20 °C

**Storage Comment:** store lyophilized/reconstituted at -20°C, once reconstituted make aliquots to avoid repeated freeze-thaw cycles. Please, remember to spin tubes briefly prior to opening them to avoid any losses that might occur from lyophilized material adhering to the cap or sides of the tubes.



### Dot Blot

Image 1.



### Western Blotting

Image 2.