

Datasheet for ABIN335114

anti-Annexin a1 antibody (C-Term)

5 Images

[Go to Product page](#)

Overview

Quantity:	100 µg
Target:	Annexin a1 (ANXA1)
Binding Specificity:	C-Term
Reactivity:	Human, Mouse, Rat, Pig
Host:	Goat
Clonality:	Polyclonal
Conjugate:	This Annexin a1 antibody is un-conjugated
Application:	Western Blotting (WB), ELISA

Product Details

Purpose:	Annexin I
Immunogen:	CQAILDETKGDYEK
Sequence:	CQAILDETKG DYK
Isotype:	IgG
Cross-Reactivity:	Cow, Dog, Human, Mouse, Pig, Rat
Purification:	Purified from goat serum by ammonium sulphate precipitation followed by antigen affinity chromatography using the immunizing peptide.
Grade:	Verified

Target Details

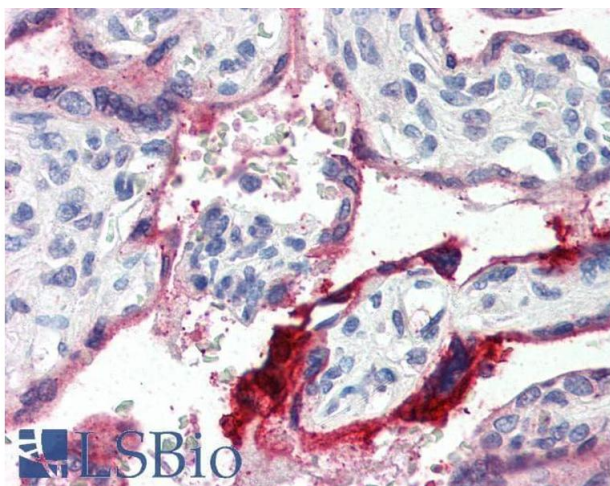
Target:	Annexin a1 (ANXA1)
Alternative Name:	ANXA1 (ANXA1 Products)
Background:	Annexin I, ANXA1, annexin A1, ANX1, LPC1, annexin I (lipocortin I), lipocortin I
Gene ID:	301, 16952, 25380
NCBI Accession:	NP_000691
Pathways:	Hormone Transport

Application Details

Application Notes:	Western Blot: Approx 37 kDa band observed in lysates of cell lines K562 and NIH3T3 (calculated MW of 38.7 kDa according to Human NP_000691.1 and Mouse NP_034860.2). Approx 37 kDa band observed in Rat and Pig Spleen lysates (calculated MW of 38.7 kDa accordi Peptide ELISA: antibody detection limit dilution 1:4000.
Restrictions:	For Research Use only

Handling

Format:	Liquid
Concentration:	0.5 mg/mL
Buffer:	Supplied at 0.5 mg/mL in Tris saline, 0.02 % sodium azide, pH 7.3 with 0.5 % bovine serum albumin.
Preservative:	Sodium azide
Precaution of Use:	This product contains Sodium azide: a POISONOUS AND HAZARDOUS SUBSTANCE which should be handled by trained staff only.
Handling Advice:	Minimize freezing and thawing.
Storage:	-20 °C
Storage Comment:	Aliquot and store at -20°C, with minimal freeze/thawing. A working aliquot may be refrigerated at 4°C for a few weeks and still remain viable.



Immunohistochemistry

Image 1. ABIN335114 (4µg/ml) staining of paraffin embedded Human Placenta. Steamed antigen retrieval with citrate buffer pH 6, AP-staining. This data is from a previous batch, not on sale.

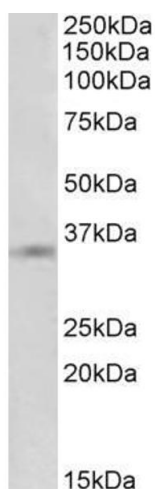
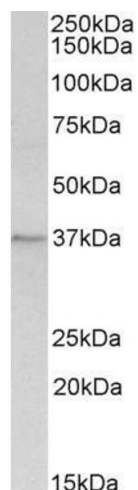


Image 2. ABIN335114 (1 µg/mL) staining of A431 lysate (35 µg protein in RIPA buffer). Primary incubation was 1 hour. Detected by chemiluminescence.



Western Blotting

Image 3. ABIN335114 (1µg/ml) staining of Rat Spleen lysate (35µg protein in RIPA buffer). Primary incubation was 1 hour. Detected by chemiluminescence.

Please check the [product details page](#) for more images. Overall 5 images are available for ABIN335114.