

Datasheet for ABIN335118
anti-ZEB1 antibody (Internal Region)

2 Images

[Go to Product page](#)

Overview

Quantity:	100 µg
Target:	ZEB1
Binding Specificity:	Internal Region
Reactivity:	Human, Mouse
Host:	Goat
Clonality:	Polyclonal
Conjugate:	This ZEB1 antibody is un-conjugated
Application:	Western Blotting (WB), ELISA, Immunofluorescence (IF)

Product Details

Purpose:	AREB6 / ZEB1
Immunogen:	Peptide with sequence C-RPQIRQKIENKPLQE, from the internal region of the protein sequence according to NP_001121600.1, NP_110378.3.
Sequence:	RPQIRQKIEN KPLQE
Isotype:	IgG
Specificity:	This antibody is expected to recognize both reported isoforms (NP_001121600.1, NP_110378.3).
Cross-Reactivity:	Human, Mouse, Rat
Purification:	Purified from goat serum by ammonium sulphate precipitation followed by antigen affinity chromatography using the immunizing peptide.

Product Details

Grade: Verified

Target Details

Target:	ZEB1
Alternative Name:	ZEB1 (ZEB1 Products)
Background:	ZEB1, AREB6, zinc finger E-box binding homeobox 1, BZP, DELTA-EF1, MGC133261, NIL-2-A, NIL-2A, NIL2A, TCF8, ZEB, ZFHEP, ZFHX1A, OTTHUMP00000019405, transcription factor 8 (represses interleukin 2 expression), zinc finger homeodomain enhancer-binding prote
Gene ID:	6935, 21417, 25705
NCBI Accession:	NP_001121600 , NP_110378
Pathways:	Regulation of Muscle Cell Differentiation

Application Details

Application Notes:	Western Blot: Approx.100 kDa band observed in Mouse Heart lysates (calculated MW of 122 kDa according to Human NP_110378.3 and Mouse NP_035676.1). Recommended concentration: 0.05-0.2 µg/mL. Primary incubation was 1 hour. Preliminary testing was unsuccessful Peptide ELISA: antibody detection limit dilution 1:32000.
Comment:	Immunofluorescence: Strong expression of the protein seen in the nuclei and cytoplasm of U2OS cells. Recommended concentration: 10µg/ml.
Restrictions:	For Research Use only

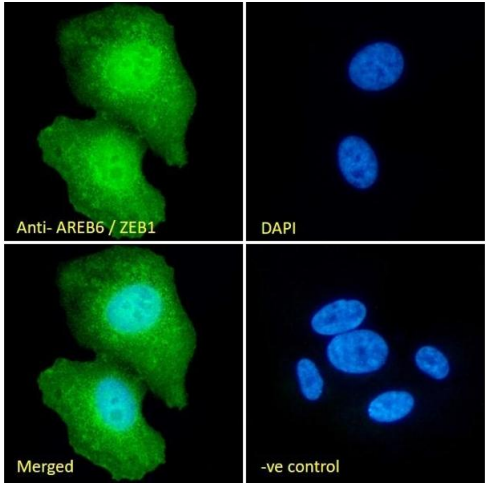
Handling

Format:	Liquid
Concentration:	0.5 mg/mL
Buffer:	Supplied at 0.5 mg/mL in Tris saline, 0.02 % sodium azide, pH 7.3 with 0.5 % bovine serum albumin.
Preservative:	Sodium azide
Precaution of Use:	This product contains Sodium azide: a POISONOUS AND HAZARDOUS SUBSTANCE which should be handled by trained staff only.

Handling

Handling Advice:	Minimize freezing and thawing.
Storage:	-20 °C
Storage Comment:	Aliquot and store at -20°C, with minimal freeze/thawing. A working aliquot may be refrigerated at 4°C for a few weeks and still remain viable.

Images



Immunofluorescence

Image 1. (ABIN335118) Immunofluorescence analysis of paraformaldehyde fixed U2OS cells, permeabilized with 0.15 % Triton. Primary incubation 1hr (10 µg/mL) followed by Alexa Fluor 488 secondary antibody (2 µg/mL), showing nuclear and cytoplasmic staining. The nuclear stai



Image 2. EB09166 (0.05µg/ml) staining of Mouse Heart lysate (35µg protein in RIPA buffer). Primary incubation was 1 hour. Detected by chemiluminescence.