



[Go to Product page](#)

Datasheet for ABIN335130
anti-DAGLA antibody (C-Term)

2 Images

Overview

Quantity:	100 µg
Target:	DAGLA
Binding Specificity:	C-Term
Reactivity:	Human
Host:	Goat
Clonality:	Polyclonal
Conjugate:	This DAGLA antibody is un-conjugated
Application:	Western Blotting (WB), ELISA, Immunohistochemistry (IHC)

Product Details

Purpose:	DAGLA
Immunogen:	Peptide with sequence C-PAKQDELVISAR, from the C Terminus of the protein sequence according to NP_006124.1.
Sequence:	PAKQDELVIS AR
Isotype:	IgG
Cross-Reactivity:	Human, Mouse, Rat
Purification:	Purified from goat serum by ammonium sulphate precipitation followed by antigen affinity chromatography using the immunizing peptide.
Grade:	Verified

Target Details

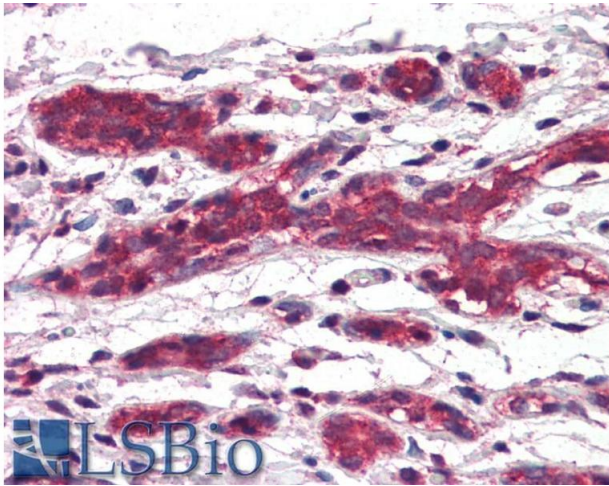
Target:	DAGLA
Alternative Name:	DAGLA (DAGLA Products)
Background:	DAGLA, diacylglycerol lipase, alpha, C11orf11, DAGL(ALPHA), DAGLALPHA, NSDDR, diacylglycerol lipase alpha, neural stem cell-derived dendrite regulator, KIAA0659
Gene ID:	747, 269060, 309207
NCBI Accession:	NP_006124

Application Details

Application Notes:	Immunohistochemistry: Paraffin embedded Human Breast, Pancreas and Spleen. Recommended concentration: 5 µg/mL. Western Blot: Approx 125 kDa band observed in Human Liver lysates (calculated MW of 115 kDa according to NP_006124.1). Recommended concentration: 0.3-1 µg/mL. Some minor background is detected and is blocked by the immunizing peptide. Primary incubation wa Peptide ELISA: antibody detection limit dilution 1:128000.
Restrictions:	For Research Use only

Handling

Format:	Liquid
Concentration:	0.5 mg/mL
Buffer:	Supplied at 0.5 mg/mL in Tris saline, 0.02 % sodium azide, pH 7.3 with 0.5 % bovine serum albumin.
Preservative:	Sodium azide
Precaution of Use:	This product contains Sodium azide: a POISONOUS AND HAZARDOUS SUBSTANCE which should be handled by trained staff only.
Handling Advice:	Minimize freezing and thawing.
Storage:	-20 °C
Storage Comment:	Aliquot and store at -20°C, with minimal freeze/thawing. A working aliquot may be refrigerated at 4°C for a few weeks and still remain viable.



Immunohistochemistry

Image 1. ABIN335130 (5 μ g/ml) staining of paraffin embedded Human Breast. Steamed antigen retrieval with citrate buffer pH 6, AP-staining.

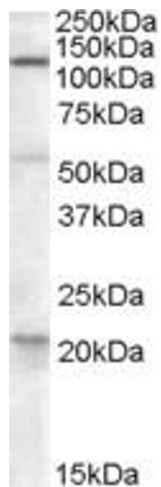


Image 2. EB08790 (0.3 μ g/ml) staining of Human Liver lysate (35 μ g protein in RIPA buffer). Primary incubation was 1 hour. Detected by chemiluminescence.