

Datasheet for ABIN335135

anti-EWSR1 antibody (Internal Region)**6** Images[Go to Product page](#)

Overview

Quantity:	100 µg
Target:	EWSR1
Binding Specificity:	Internal Region
Reactivity:	Human
Host:	Goat
Clonality:	Polyclonal
Conjugate:	This EWSR1 antibody is un-conjugated
Application:	Western Blotting (WB), ELISA, Immunohistochemistry (IHC)

Product Details

Purpose:	EWS / EWSR1
Immunogen:	Peptide with sequence C-TSYDQSSYSQQNTYG, from the internal region of the protein sequence according to NP_053733.2, NP_005234.1, NP_001156757.1, NP_001156758.1, NP_001156759.1.
Sequence:	TSYDQSSYSQ QNTYG
Isotype:	IgG
Specificity:	This antibody is expected to recognize all five reported isoforms (NP_053733.2, NP_005234.1, NP_001156757.1, NP_001156758.1, NP_001156759.1).
Cross-Reactivity:	Cow, Human, Mouse, Pig, Rat
Purification:	Purified from goat serum by ammonium sulphate precipitation followed by antigen affinity

Product Details

chromatography using the immunizing peptide.

Grade: Verified

Target Details

Target: EWSR1

Alternative Name: EWSR1 ([EWSR1 Products](#))

Background: EWSR1, EWS, Ewing sarcoma breakpoint region 1, EWS/FLI fusion protein, EWSR1/ZNF384 fusion protein, Ewings sarcoma EWS-Flt1 (type 1) oncogene, bK984G1.4 (Ewing sarcoma breakpoint region 1 protein), extraskeletal myxoid chondrosarcoma EWS/TEC/CHN fusion pr

Gene ID: 2130, 14030, 289752

NCBI Accession: [NP_053733](#), [NP_005234](#), [NP_001156757](#), [NP_001156758](#), [NP_001156759](#)

Application Details

Application Notes: Immunohistochemistry: Paraffin embedded Human Kidney. Recommended concentration: 5-7 µg/mL.
Western Blot: Approx. 90 kDa band observed in nuclear lysates of cell line HeLa (calculated MW of 68.5 kDa according to NP_053733.1). This molecular weight is routinely observed by other sources. Recommended concentration: 0.3-1 µg/mL.
Peptide ELISA: antibody detection limit dilution 1:64000.

Comment: **Additional validation:** This antibody has been successfully used in the following paper: Sikorski et al. (2018) PMID: 30377371.

Restrictions: For Research Use only

Handling

Format: Liquid

Concentration: 0.5 mg/mL

Buffer: Supplied at 0.5 mg/mL in Tris saline, 0.02 % sodium azide, pH 7.3 with 0.5 % bovine serum albumin.

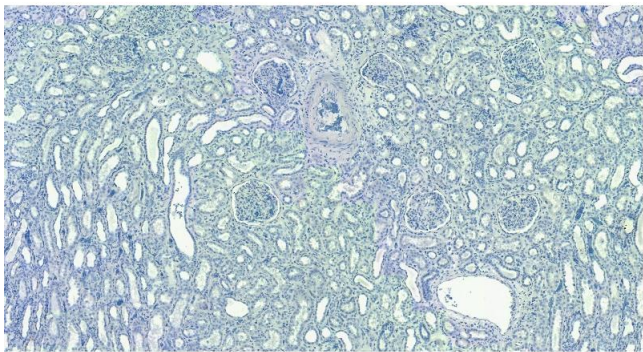
Preservative: Sodium azide

Precaution of Use: This product contains Sodium azide: a POISONOUS AND HAZARDOUS SUBSTANCE which should be handled by trained staff only.

Handling

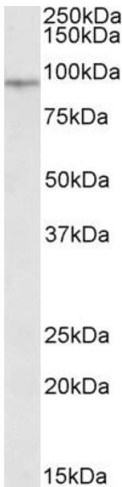
Handling Advice:	Minimize freezing and thawing.
Storage:	-20 °C
Storage Comment:	Aliquot and store at -20°C, with minimal freeze/thawing. A working aliquot may be refrigerated at 4°C for a few weeks and still remain viable.

Images



Immunohistochemistry

Image 1. (ABIN335135) Negative Control showing staining of paraffin embedded Human Kidney, with no primary antibody.



Western Blotting

Image 2. ABIN335135 (0.3µg/ml) staining of nuclear HeLa lysate (35µg protein in RIPA buffer). Primary incubation was 1 hour. Detected by chemiluminescence.

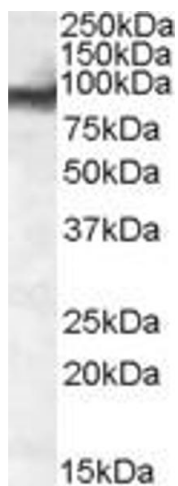


Image 3. EB09167 (0.1µg/ml) staining of nuclear HeLa lysate (35µg protein in RIPA buffer). Primary incubation was 1 hour. Detected by chemiluminescence.

Please check the [product details page](#) for more images. Overall 6 images are available for ABIN335135.