

Datasheet for ABIN335141
anti-ZDHHC13 antibody (C-Term)

2 Images

[Go to Product page](#)

Overview

Quantity:	100 µg
Target:	ZDHHC13
Binding Specificity:	C-Term
Reactivity:	Human
Host:	Goat
Clonality:	Polyclonal
Conjugate:	This ZDHHC13 antibody is un-conjugated
Application:	Western Blotting (WB), ELISA, Immunohistochemistry (IHC)

Product Details

Purpose:	HIP14L / ZDHHC13
Immunogen:	Peptide with sequence C-FHPAREKVLRSV, from the C Terminus of the protein sequence according to NP_061901.2, NP_001001483.1.
Sequence:	FHPAREKVLRSV
Isotype:	IgG
Specificity:	This antibody is expected to recognise both reported isoforms (NP_061901.2 and NP_001001483.1).
Cross-Reactivity:	Human, Mouse, Rat
Purification:	Purified from goat serum by ammonium sulphate precipitation followed by antigen affinity chromatography using the immunizing peptide.

Product Details

Grade: Verified

Target Details

Target: ZDHHHC13

Alternative Name: ZDHHHC13 ([ZDHHHC13 Products](#))

Background: ZDHHHC13, HIP14L, HIP3RP, FLJ10852, FLJ10941, MGC64994, zinc finger, DHHC domain containing 13, HIP14-like, HIP14-related protein, huntingtin interacting protein HIP3RP, hypothetical protein similar to ankyrin repeat-containing priotein AKR1, zinc finger,

Gene ID: 54503, 243983, 365252

NCBI Accession: [NP_061901](#), [NP_001001483](#)

Application Details

Application Notes: Immunohistochemistry: Paraffin embedded Human Lung. Recommended concentration: 5 µg/mL.
Western Blot: Approx. 70 kDa band observed in Human Brain (Cerebellum) lysates (calculated MW of 70.9 kDa according to NP_061901.2). Recommended concentration: 1-3 µg/mL.
Peptide ELISA: antibody detection limit dilution 1:16000.

Restrictions: For Research Use only

Handling

Format: Liquid

Concentration: 0.5 mg/mL

Buffer: Supplied at 0.5 mg/mL in Tris saline, 0.02 % sodium azide, pH 7.3 with 0.5 % bovine serum albumin.

Preservative: Sodium azide

Precaution of Use: This product contains Sodium azide: a POISONOUS AND HAZARDOUS SUBSTANCE which should be handled by trained staff only.

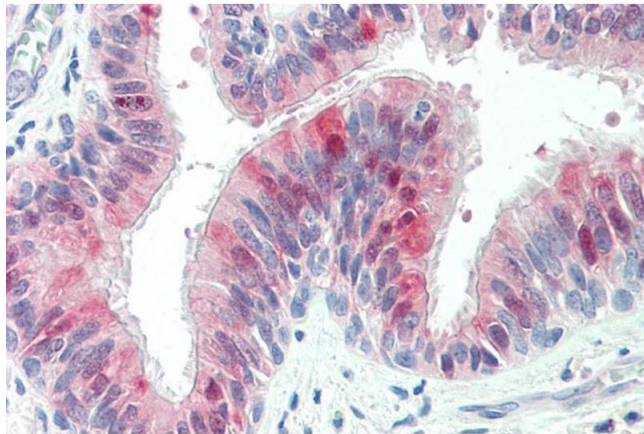
Handling Advice: Minimize freezing and thawing.

Storage: -20 °C

Storage Comment: Aliquot and store at -20°C, with minimal freeze/thawing. A working aliquot may be refrigerated

at 4°C for a few weeks and still remain viable.

Images



Immunohistochemistry

Image 1. ABIN335141 (5µg/ml) staining of paraffin embedded Human Lung. Steamed antigen retrieval with citrate buffer pH 6, AP-staining.



Image 2. EB06640 (0.1µg/ml) staining of Human Cerebellum lysate (35µg protein in RIPA buffer). Primary incubation was 1 hour. Detected by chemiluminescence.