

Datasheet for ABIN335149

anti-NDEL1 antibody (Internal Region)[Go to Product page](#)**1** Image

Overview

Quantity:	100 µg
Target:	NDEL1
Binding Specificity:	Internal Region
Reactivity:	Human
Host:	Goat
Clonality:	Polyclonal
Conjugate:	This NDEL1 antibody is un-conjugated
Application:	Western Blotting (WB), ELISA

Product Details

Purpose:	NDEL1
Immunogen:	Peptide with sequence CRNFAKDQASRKSY, from the internal region of the protein sequence according to NP_001020750.1, NP_110435.1.
Sequence:	CRNFAKDQAS RKSY
Isotype:	IgG
Specificity:	This antibody is expected to recognize both reported isoforms (NP_001020750.1, NP_110435.1).
Cross-Reactivity:	Cow, Dog, Human, Mouse, Pig, Rat
Purification:	Purified from goat serum by ammonium sulphate precipitation followed by antigen affinity chromatography using the immunizing peptide.

Product Details

Grade: Verified

Target Details

Target: NDEL1

Alternative Name: NDEL1 ([NDEL1 Products](#))

Background: NDEL1, nudE nuclear distribution gene E homolog (A. nidulans)-like 1, DKFZp451M0318, EOPA, MITAP1, NUDEL, NUDE-like protein, endooligopeptidase A, mitotin-associated protein MITAP1, nudE nuclear distribution gene E homolog like 1

Gene ID: 81565, 83431, 170845

NCBI Accession: [NP_001020750](#), [NP_110435](#)

Pathways: [Regulation of Cell Size](#)

Application Details

Application Notes: Western Blot: Approx 38+39 kDa bands observed in Human Brain (Cerebellum) lysates (calculated MW of 37.0 kDa according to NP_001020750.1 and of 38.4 kDa according to NP_110435.1). Recommended concentration: 0.1-0.3 µg/mL.
Peptide ELISA: antibody detection limit dilution 1:8000.

Restrictions: For Research Use only

Handling

Format: Liquid

Concentration: 0.5 mg/mL

Buffer: Supplied at 0.5 mg/mL in Tris saline, 0.02 % sodium azide, pH 7.3 with 0.5 % bovine serum albumin.

Preservative: Sodium azide

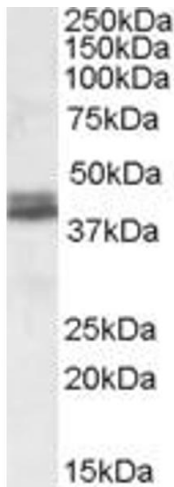
Precaution of Use: This product contains Sodium azide: a POISONOUS AND HAZARDOUS SUBSTANCE which should be handled by trained staff only.

Handling Advice: Minimize freezing and thawing.

Storage: -20 °C

Storage Comment: Aliquot and store at -20°C, with minimal freeze/thawing. A working aliquot may be refrigerated

at 4°C for a few weeks and still remain viable.



Western Blotting

Image 1. ABIN335149 (0.1µg/ml) staining of Human Cerebellum lysate (35µg protein in RIPA buffer). Primary incubation was 1 hour. Detected by chemiluminescence.