

Datasheet for ABIN335150
anti-Netrin 1 antibody (C-Term)[Go to Product page](#)

3 Images

2 Publications

Overview

Quantity:	100 µg
Target:	Netrin 1 (NTN1)
Binding Specificity:	C-Term
Reactivity:	Human
Host:	Goat
Clonality:	Polyclonal
Conjugate:	This Netrin 1 antibody is un-conjugated
Application:	ELISA, Immunofluorescence (IF)

Product Details

Purpose:	Netrin 1
Immunogen:	Peptide with sequence KFQQREKKGKCKKA, from the C Terminus of the protein sequence according to NP_004813.2.
Sequence:	KFQQREKKGK CKKA
Isotype:	IgG
Cross-Reactivity:	Cow, Dog, Human, Mouse, Rat
Purification:	Purified from goat serum by ammonium sulphate precipitation followed by antigen affinity chromatography using the immunizing peptide.
Grade:	Verified

Target Details

Target:	Netrin 1 (NTN1)
Alternative Name:	NTN1 (NTN1 Products)
Background:	Netrin 1, HGNC:8029, NTN1, NTN1L, Netrin-1, netrin 1, mouse, homolog of
Gene ID:	9423, 18208, 114523
NCBI Accession:	NP_004813
Pathways:	Regulation of Cell Size

Application Details

Application Notes:	Peptide ELISA: antibody detection limit dilution 1:32000.
Comment:	Immunofluorescence: Strong expression of the protein seen in the membrane and cytoplasm of U2OS cells. Recommended concentration: 10µg/ml.
Restrictions:	For Research Use only

Handling

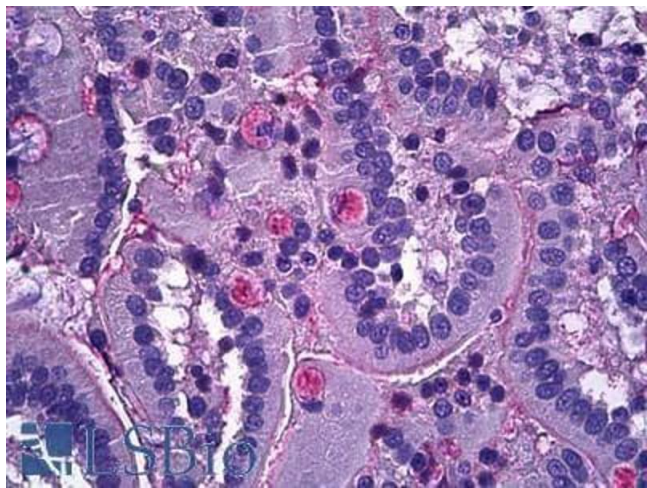
Format:	Liquid
Concentration:	0.5 mg/mL
Buffer:	Supplied at 0.5 mg/mL in Tris saline, 0.02 % sodium azide, pH 7.3 with 0.5 % bovine serum albumin.
Preservative:	Sodium azide
Precaution of Use:	This product contains Sodium azide: a POISONOUS AND HAZARDOUS SUBSTANCE which should be handled by trained staff only.
Handling Advice:	Minimize freezing and thawing.
Storage:	-20 °C
Storage Comment:	Aliquot and store at -20°C, with minimal freeze/thawing. A working aliquot may be refrigerated at 4°C for a few weeks and still remain viable.

Publications

Product cited in:	Jayakumar, Nauta, Bakker, Bilo, Gansevoort, Johnson, Ramesh: "Netrin-1, a urinary proximal tubular injury marker, is elevated early in the time course of human diabetes." in: Journal of nephrology , Vol. 27, Issue 2, pp. 151-7, (2014) (PubMed).
-------------------	---

White, Mohamed, Jayakumar, Ramesh: "Tubular injury marker netrin-1 is elevated early in experimental diabetes." in: **Journal of nephrology**, Vol. 26, Issue 6, pp. 1055-64, (2013) ([PubMed](#)).

Images



Immunohistochemistry

Image 1. ABIN335150 (3.75µg/ml) staining of paraffin embedded Human Intestine. Steamed antigen retrieval with citrate buffer pH 6, AP-staining. This data is from a previous batch, not on sale.

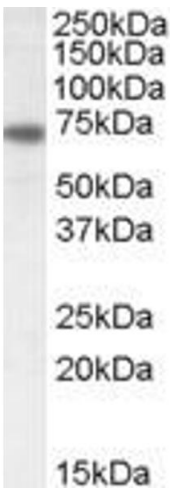
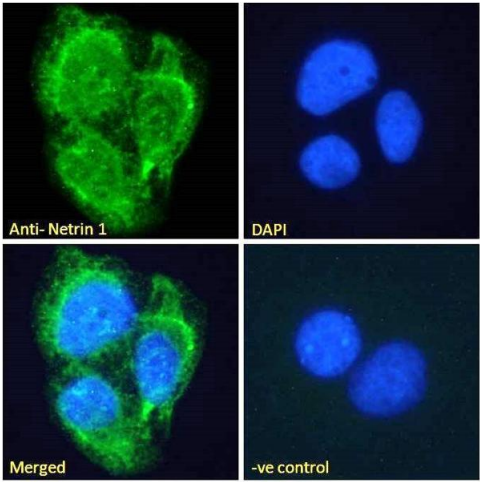


Image 2. EB07007 (0.5µg/ml) staining of Rat Brain lysate (35µg protein in RIPA buffer). Primary incubation was 1 hour. Detected by chemiluminescence.



Immunofluorescence

Image 3. ABIN335150 Immunofluorescence analysis of paraformaldehyde fixed U2OS cells, permeabilized with 0.15% Triton. Primary incubation 1hr (10ug/ml) followed by Alexa Fluor 488 secondary antibody (2ug/ml), showing membrane and secreted staining. The nuclear stain