



[Go to Product page](#)

Datasheet for ABIN335163

anti-SLC22A17 antibody (Internal Region)

2 Images

Overview

Quantity:	100 µg
Target:	SLC22A17
Binding Specificity:	Internal Region
Reactivity:	Human
Host:	Goat
Clonality:	Polyclonal
Conjugate:	This SLC22A17 antibody is un-conjugated
Application:	ELISA, Immunohistochemistry (IHC)

Product Details

Purpose:	SLC22A17
Immunogen:	Peptide with sequence C-PETKRKLLPEVLRD, from the internal region of the protein sequence according to NP_065105.2, NP_057693.3.
Sequence:	PETKRKLLPE VLRD
Isotype:	IgG
Specificity:	This antibody is expected to recognize both reported isoforms NP_065105.2 and NP_057693.3).
Cross-Reactivity:	Cow, Dog, Human, Mouse, Rat
Purification:	Purified from goat serum by ammonium sulphate precipitation followed by antigen affinity chromatography using the immunizing peptide.

Product Details

Grade: Verified

Target Details

Target: SLC22A17

Alternative Name: SLC22A17 ([SLC22A17 Products](#))

Background: SLC22A17, solute carrier family 22, member 17, BOCT, BOIT, NGALR, hBOIT, NGAL receptor, neutrophil gelatinase-associated lipocalin receptor, potent brain type organic ion transporter, solute carrier family 22 (organic cation transporter), member 17

Gene ID: 51310, 59049, 305886

NCBI Accession: [NP_065105](#), [NP_057693](#)

Pathways: [Transition Metal Ion Homeostasis](#)

Application Details

Application Notes: Immunohistochemistry: Paraffin embedded Human Brain (Cortex and Cerebellum).
Recommended concentration: 2 µg/mL.
Western Blot: Preliminary experiments gave an approx 150 kDa band in Human Cerebellum lysates after 0.1 µg/mL antibody staining. Please note that currently we cannot find an explanation in the literature for the band we observe given the calculated size of
Peptide ELISA: antibody detection limit dilution 1:64000.

Restrictions: For Research Use only

Handling

Format: Liquid

Concentration: 0.5 mg/mL

Buffer: Supplied at 0.5 mg/mL in Tris saline, 0.02 % sodium azide, pH 7.3 with 0.5 % bovine serum albumin.

Preservative: Sodium azide

Precaution of Use: This product contains Sodium azide: a POISONOUS AND HAZARDOUS SUBSTANCE which should be handled by trained staff only.

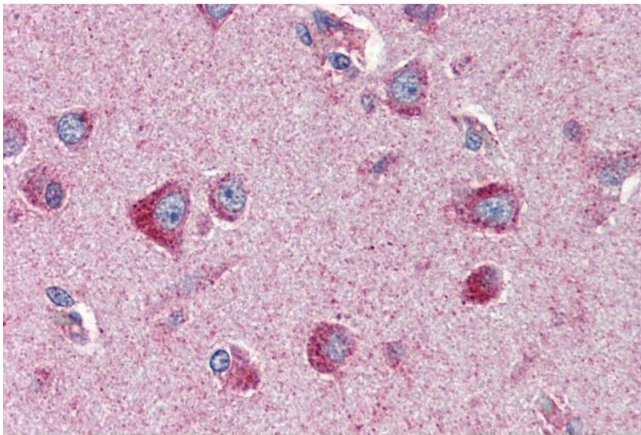
Handling Advice: Minimize freezing and thawing.

Handling

Storage: -20 °C

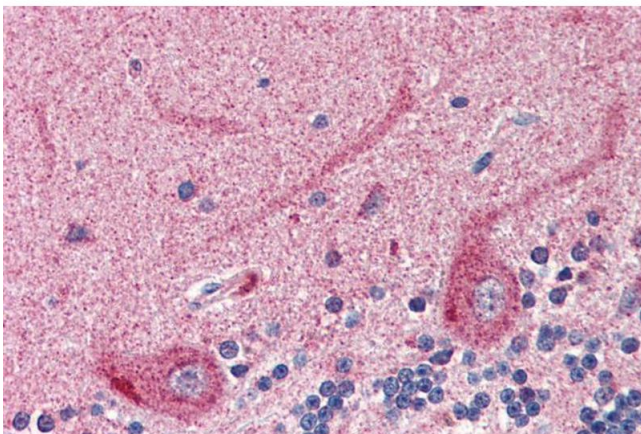
Storage Comment: Aliquot and store at -20°C, with minimal freeze/thawing. A working aliquot may be refrigerated at 4°C for a few weeks and still remain viable.

Images



Immunohistochemistry

Image 1. ABIN335163 (2µg/ml) staining of paraffin embedded Human Cortex. Steamed antigen retrieval with citrate buffer pH 6, AP-staining.



Immunohistochemistry

Image 2. ABIN335163 (2µg/ml) staining of paraffin embedded Human Cerebellum. Steamed antigen retrieval with citrate buffer pH 6, AP-staining.