

Datasheet for ABIN335168  
**anti-SYT1 antibody (Internal Region)**

## 2 Images

[Go to Product page](#)

## Overview

Quantity:	100 µg
Target:	SYT1
Binding Specificity:	Internal Region
Reactivity:	Human
Host:	Goat
Clonality:	Polyclonal
Conjugate:	This SYT1 antibody is un-conjugated
Application:	Western Blotting (WB), Immunohistochemistry (IHC), ELISA

## Product Details

Purpose:	Synaptotagmin I
Immunogen:	Peptide with sequence C-RDLQSAEKEEQEK, from the internal region of the protein sequence according to NP_005630.1.
Sequence:	RDLQSAEKEE QEK
Isotype:	IgG
Specificity:	Reported isoforms NP_005630.1, NP_001129277.1 and NP_001129278.1 represent identical protein.
Cross-Reactivity:	Cow, Dog, Human, Mouse, Rat
Purification:	Purified from goat serum by ammonium sulphate precipitation followed by antigen affinity chromatography using the immunizing peptide.

## Product Details

Grade: Verified

## Target Details

Target: SYT1

Alternative Name: SYT1 ([SYT1 Products](#))

Background: Synaptotagmin I , DKFZp781D2042, SYT1, P65, SVP65, SYT, synaptotagmin 1

Molecular Weight: 47.6kDa

Gene ID: 6857, 20979, 25716

NCBI Accession: [NP\\_005630](#)

Pathways: [Synaptic Vesicle Exocytosis](#), [Dicarboxylic Acid Transport](#)

## Application Details

Application Notes: Immunohistochemistry: In paraffin embedded Human Brain shows vesicular staining in neuronal cell and axon. Recommended concentration: 4-6 µg/mL.  
Western Blot: Approx. 65 kDa band observed in Human Brain (hippocampus) and Mouse and Rat Brain lysates (calculated MW of 47.6 kDa according to NP\_005630.1). The observed molecular weight corresponds to earlier findings in literature with different antibody  
Peptide ELISA: antibody detection limit dilution 1:2000.

Restrictions: For Research Use only

## Handling

Format: Liquid

Concentration: 0.5 mg/mL

Buffer: Supplied at 0.5 mg/mL in Tris saline, 0.02 % sodium azide, pH 7.3 with 0.5 % bovine serum albumin.

Preservative: Sodium azide

Precaution of Use: This product contains Sodium azide: a POISONOUS AND HAZARDOUS SUBSTANCE which should be handled by trained staff only.

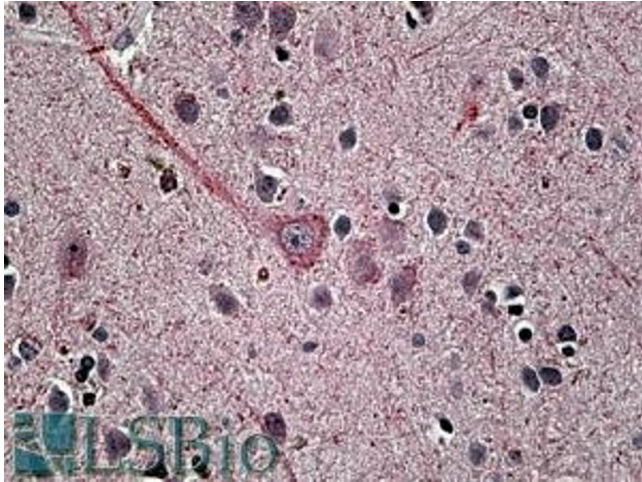
Handling Advice: Minimize freezing and thawing.

Storage: -20 °C

## Handling

Storage Comment: Aliquot and store at -20°C, with minimal freeze/thawing. A working aliquot may be refrigerated at 4°C for a few weeks and still remain viable.

## Images



### Immunohistochemistry

**Image 1.** ABIN335168 (3.8µg/ml) staining of paraffin embedded Human Brain. Steamed antigen retrieval with citrate buffer pH 6, AP-staining.



### Western Blotting

**Image 2.** ABIN335168 (1µg/ml) staining of Human Hippocampus lysate (35µg protein in RIPA buffer). Primary incubation was 1 hour. Detected by chemiluminescence.