



[Go to Product page](#)

Datasheet for ABIN335316

anti-KRT20 antibody

2 Images

1 Publication

Overview

Quantity:	1 mL
Target:	KRT20
Reactivity:	Please inquire
Host:	Mouse
Clonality:	Monoclonal
Conjugate:	This KRT20 antibody is un-conjugated
Application:	Western Blotting (WB), Immunohistochemistry (IHC), Immunohistochemistry (Paraffin-embedded Sections) (IHC (p))

Product Details

Clone:	MKs20-8
Isotype:	IgG2a

Target Details

Target:	KRT20
Alternative Name:	Cytokeratin 20 / Keratin K20 (KRT20 Products)

Application Details

Restrictions:	For Research Use only
---------------	-----------------------

Handling

Format: Liquid

Storage: 4 °C/-20 °C

Publications

Product cited in: Moll, Schiller, Franke: "Identification of protein IT of the intestinal cytoskeleton as a novel type I cytokeratin with unusual properties and expression patterns." in: **The Journal of cell biology**, Vol. 111, Issue 2, pp. 567-80, (1990) ([PubMed](#)).

Images

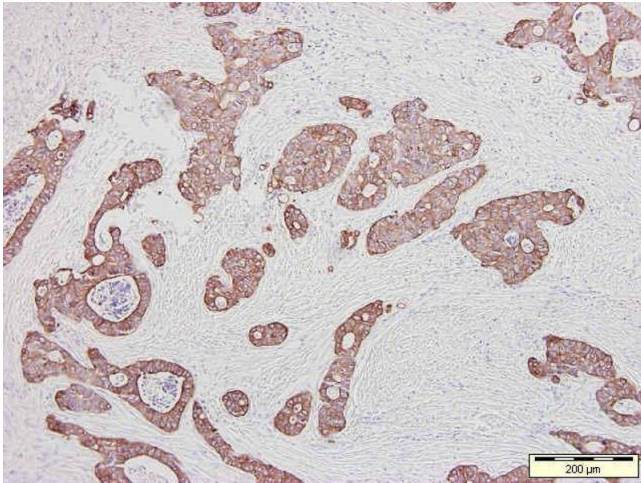
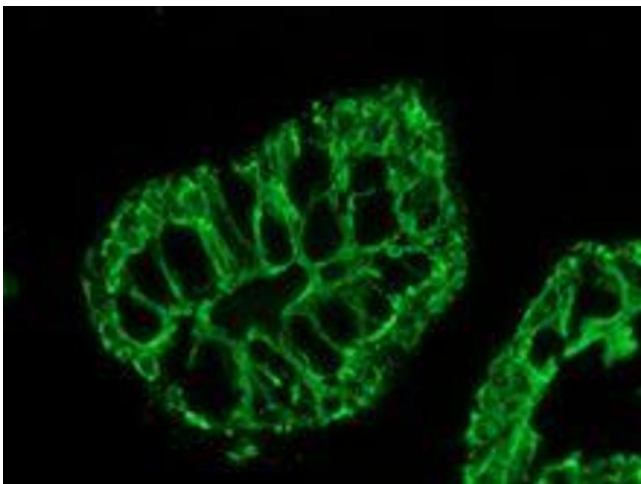


Image 1.



Immunofluorescence

Image 2. Cytokeratin 20 immunofluorescence staining of human colon epithelium.