

Datasheet for ABIN335327

anti-KRT8 antibody

5 Images

10 Publications



[Go to Product page](#)

Overview

Quantity:	0.1 mg
Target:	KRT8
Reactivity:	Human, Mouse
Host:	Mouse
Clonality:	Monoclonal
Conjugate:	This KRT8 antibody is un-conjugated
Application:	Western Blotting (WB), Immunohistochemistry (IHC), Flow Cytometry (FACS), Immunocytochemistry (ICC), Immunohistochemistry (Frozen Sections) (IHC (fro))

Product Details

Immunogen:	M20 is a mouse monoclonal IgG1 antibody derived by fusion of murine myeloma cells with spleen cells from a mouse immunized with keratin isolated from the human breast carcinoma cell line MCF-7.
Clone:	M20
Isotype:	IgG1
Specificity:	Human and mouse.
Purification:	Purified

Target Details

Target:	KRT8
Alternative Name:	Cytokeratin 8 / Keratin K8 (KRT8 Products)

Target Details

Background: Cytokeratins are a subfamily of intermediate filament proteins and are characterized by a remarkable biochemical diversity, represented in epithelial tissues by at least 20 different polypeptides. They range in molecular weight between 40 kDa and 68 kDa and isoelectric pH between 4.9 - 7.8. The individual cytokeratin polypeptides are numbered 1 to 20. The various epithelia in the human body usually express cytokeratins which are not only characteristic of the type of epithelium, but also related to the degree of maturation or differentiation within an epithelium. Cytokeratin subtype expression patterns are used to an increasing extent in the distinction of different types of epithelial malignancies. The cytokeratin antibodies are not only of assistance in the differential diagnosis of tumors using immunohistochemistry on tissue sections, but are also a useful tool in cytopathology and flow cytometric assays.

Application Details

Application Notes: M20 reacts with glandular epithelial cells (endocrine and exocrine) as well as mesothelial cells of the digestive, respiratory and urogenital tract and most adenocarcinomas derived from these cells. M20 is suitable for immunoblotting, immunocytochemistry, immunohistochemistry on frozen tissues and flow cytometry. Optimal antibody dilution should be determined by titration, recommended range is 1:100 - 1:200 for immunohistochemistry with avidin-biotinylated horseradish peroxidase complex (ABC) as detection reagent, and 1:100 - 1:1000 for immunoblotting applications.

Restrictions: For Research Use only

Handling

Storage: 4 °C

Publications

Product cited in: Waseem, Karsten, Leigh, Purkis, Waseem, Lane: "Conformational changes in the rod domain of human keratin 8 following heterotypic association with keratin 18 and its implication for filament stability." in: **Biochemistry**, Vol. 43, Issue 5, pp. 1283-95, (2004) ([PubMed](#)).

Ku, Gish, Wright, Omary: "Keratin 8 mutations in patients with cryptogenic liver disease." in: **The New England journal of medicine**, Vol. 344, Issue 21, pp. 1580-7, (2001) ([PubMed](#)).

Wetzels, Kuijpers, Lane, Leigh, Troyanovsky, Holland, van Haelst, Ramaekers: "Basal cell-specific and hyperproliferation-related keratins in human breast cancer." in: **The American journal of**

pathology, Vol. 138, Issue 3, pp. 751-63, (1991) ([PubMed](#)).

Ramaekers, van Niekerk, Poels, Schaafsma, Huijsmans, Robben, Schaart, Vooijs: "Use of monoclonal antibodies to keratin 7 in the differential diagnosis of adenocarcinomas." in: **The American journal of pathology**, Vol. 136, Issue 3, pp. 641-55, (1990) ([PubMed](#)).

Schaafsma, Ramaekers, van Muijen, Lane, Leigh, Robben, Huijsmans, Ooms, Ruiter: "Distribution of cytokeratin polypeptides in human transitional cell carcinomas, with special emphasis on changing expression patterns during tumor progression." in: **The American journal of pathology**, Vol. 136, Issue 2, pp. 329-43, (1990) ([PubMed](#)).

There are more publications referencing this product on: [Product page](#)

Images

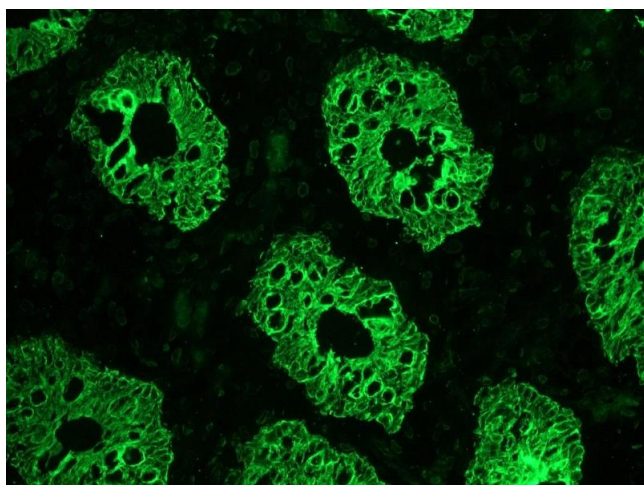


Image 1.

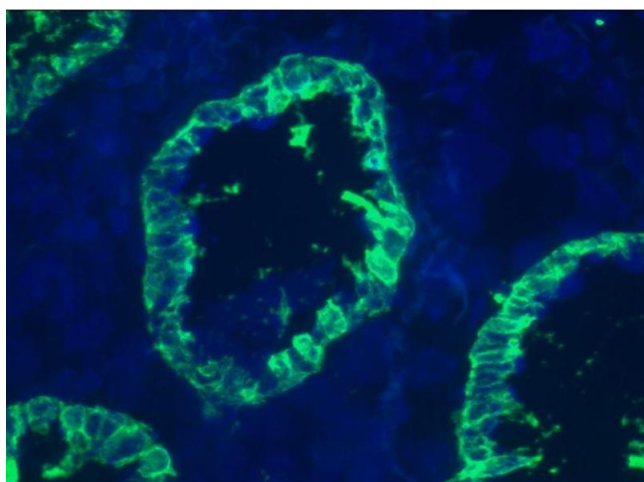


Image 2.

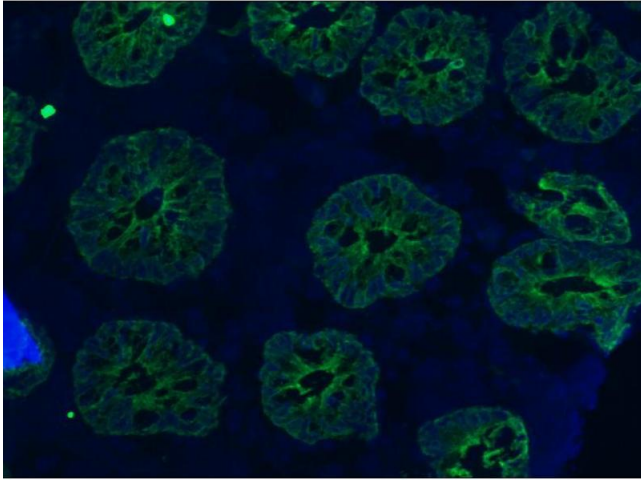


Image 3.

Please check the [product details page](#) for more images. Overall 5 images are available for ABIN335327.