

Datasheet for ABIN335328
anti-Keratin 10 antibody

4 Images

12 Publications

[Go to Product page](#)

Overview

Quantity:	0.1 mg
Target:	Keratin 10 (KRT10)
Reactivity:	Human, Mouse, Rat, Dog, Zebrafish (Danio rerio)
Host:	Mouse
Clonality:	Monoclonal
Conjugate:	This Keratin 10 antibody is un-conjugated
Application:	Flow Cytometry (FACS), Immunohistochemistry (IHC), Western Blotting (WB), Immunocytochemistry (ICC), Immunohistochemistry (Frozen Sections) (IHC (fro))

Product Details

Immunogen:	RKSE60 is a mouse monoclonal IgG1 antibody derived by fusion of SP2/0 mouse myeloma cells with spleen cells from a mouse immunized with cytokeratins from the human epidermis.
Clone:	RKSE60
Isotype:	IgG1
Specificity:	Human, mouse, rat, canine.
Purification:	Purified

Target Details

Target:	Keratin 10 (KRT10)
Alternative Name:	Cytokeratin 10 / Keratin K10 (KRT10 Products)

Target Details

Background: Cytokeratins are a subfamily of intermediate filament proteins and are characterized by a remarkable biochemical diversity, represented in human epithelial tissues by at least 20 different polypeptides. They range in molecular weight between 40 kDa and 68 kDa and isoelectric pH between 4.9 - 7.8. The individual human cytokeratins are numbered 1 to 20. The various epithelia in the human body usually express cytokeratins which are not only characteristic of the type of epithelium, but also related to the degree of maturation or differentiation within an epithelium. Cytokeratin subtype expression patterns are used to an increasing extent in the distinction of different types of epithelial malignancies. The cytokeratin antibodies are not only of assistance in the differential diagnosis of tumors using immunohistochemistry on tissue sections, but are also a useful tool in cytopathology and flow cytometric assays.

Application Details

Application Notes: RKSE60 reacts exclusively with cytokeratin 10 which is present in keratinizing stratified epithelia and in differentiated areas of highly differentiated squamous cell carcinomas. RKSE60 is suitable for immunoblotting, immunocytochemistry, immunohistochemistry on frozen tissues and flow cytometry. Optimal antibody dilution should be determined by titration, recommended range is 1:100 - 1:200 for flow cytometry, and for immunohistochemistry with avidin-biotinylated horseradish peroxidase complex (ABC) as detection reagent, and 1:100 - 1:1000 for immunoblotting applications.

Restrictions: For Research Use only

Handling

Storage: 4 °C

Publications

Product cited in: Meek, Van Elssen, Huijskens, van der Stegen, Tonnaer, Lumeij, Vanderlocht, Hesselink, Kirkland, Germeraad, Bos: "T cells fail to develop in the human skin-cell explants system, an inconvenient truth." in: **BMC immunology**, Vol. 12, Issue 1, pp. 17, (2011) ([PubMed](#)).

Franssen, Boezeman, Van De Kerkhof, Van Erp: "Monitoring hyperproliferative disorders in human skin: flow cytometry of changing cytokeratin expression." in: **Cytometry. Part B, Clinical cytometry**, Vol. 57, Issue 1, pp. 32-9, (2003) ([PubMed](#)).

Ramaekers, van Niekerk, Poels, Schaafsma, Huijsmans, Robben, Schaart, Vooijs: "Use of monoclonal antibodies to keratin 7 in the differential diagnosis of adenocarcinomas." in: **The American journal of pathology**, Vol. 136, Issue 3, pp. 641-55, (1990) ([PubMed](#)).

Schaafsma, Ramaekers, van Muijen, Lane, Leigh, Robben, Huijsmans, Ooms, Ruiter: "Distribution of cytokeratin polypeptides in human transitional cell carcinomas, with special emphasis on changing expression patterns during tumor progression." in: **The American journal of pathology**, Vol. 136, Issue 2, pp. 329-43, (1990) ([PubMed](#)).

Smedts, Ramaekers, Robben, Pruszczyński, van Muijen, Lane, Leigh, Vooijs: "Changing patterns of keratin expression during progression of cervical intraepithelial neoplasia." in: **The American journal of pathology**, Vol. 136, Issue 3, pp. 657-68, (1990) ([PubMed](#)).

There are more publications referencing this product on: [Product page](#)

Images

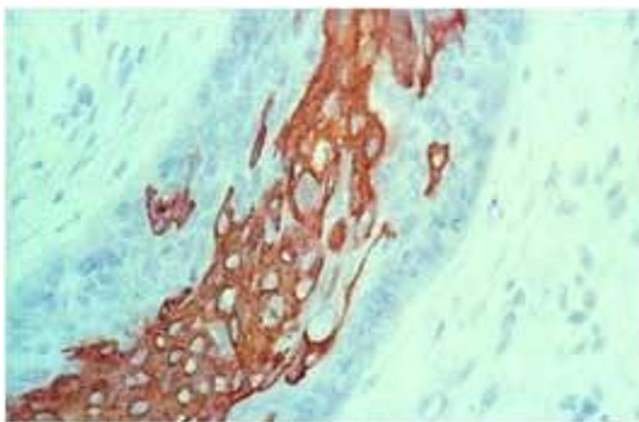


Image 1.

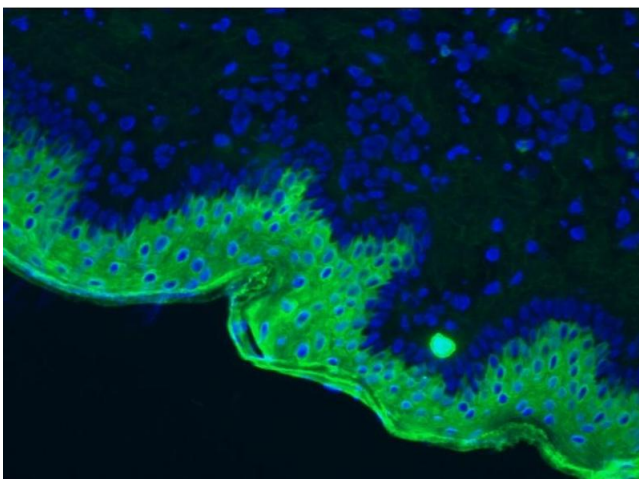


Image 2.

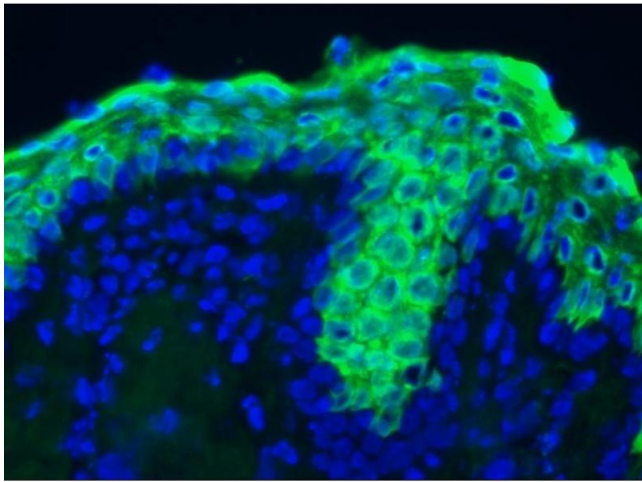


Image 3.

Please check the [product details page](#) for more images. Overall 4 images are available for ABIN335328.