

Datasheet for ABIN336082
anti-TOLLIP antibody (AA 61-274)

2 Images

[Go to Product page](#)

Overview

Quantity:	0.1 mL
Target:	TOLLIP
Binding Specificity:	AA 61-274
Reactivity:	Human
Host:	Mouse
Clonality:	Monoclonal
Conjugate:	This TOLLIP antibody is un-conjugated
Application:	Western Blotting (WB), Enzyme Immunoassay (EIA)

Product Details

Immunogen:	Recombinant human Tollip (61-274 aa) purified from E. coli
Clone:	K1B17
Isotype:	IgG2a
Specificity:	The antibody recognizes human TOLLIP. Other species not tested.
Characteristics:	Synonyms: Toll-interacting protein
Purification:	Protein-G affinity chromatography

Target Details

Target:	TOLLIP
Alternative Name:	TOLLIP (TOLLIP Products)

Target Details

Background: Toll interacting protein, also known as Tollip, is an inhibitory adaptor protein within the signaling pathway of IL-1 and Toll-like receptors (TLR). The Toll-like receptors are essential transmembrane signaling receptors of the innate immune system that alert the host to the presence of a microbial invader. Tollip recruits IRAK1 to the IL-1 receptor complex and inhibits IRAK1 phosphorylation and kinase activity. Synonyms: Toll-interacting protein

Gene ID: 54472

UniProt: [Q9H0E2](#)

Application Details

Application Notes: ELISA. Western blot (1: 500 - 1,000).
Other applications not tested.
Optimal dilutions are dependent on conditions and should be determined by the user.

Restrictions: For Research Use only

Handling

Format: Liquid

Concentration: 1.0 mg/mL

Buffer: PBS, pH 7.4, containing 0.09 % sodium azide

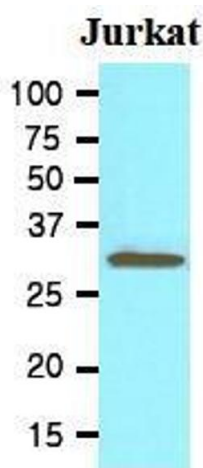
Preservative: Sodium azide

Precaution of Use: This product contains sodium azide: a POISONOUS AND HAZARDOUS SUBSTANCE which should be handled by trained staff only.

Storage: 4 °C/-20 °C

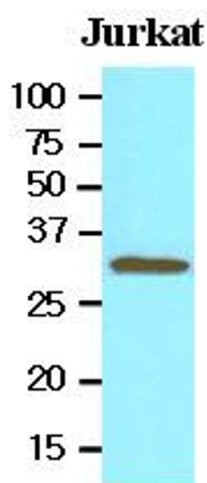
Storage Comment: Store the antibody undiluted at 2-8 °C for one month or (in aliquots) at -20 °C for longer. Avoid repeated freezing and thawing.
Shelf life: one year from despatch.

Expiry Date: 12 months



Western Blotting

Image 1.



Western Blotting

Image 2.