

Datasheet for ABIN336090
anti-EPM2A antibody (AA 243-331)[Go to Product page](#)

2 Images

Overview

Quantity:	0.1 mL
Target:	EPM2A
Binding Specificity:	AA 243-331
Reactivity:	Human
Host:	Mouse
Clonality:	Monoclonal
Conjugate:	This EPM2A antibody is un-conjugated
Application:	Western Blotting (WB), Enzyme Immunoassay (EIA)

Product Details

Immunogen:	Recombinant human EPM2A (aa 243-331) purified from E. coli
Clone:	K2A3
Isotype:	IgG1
Specificity:	The antibody recognizes EPM2A.
Cross-Reactivity (Details):	Species reactivity (tested): Human
Characteristics:	Synonyms: EPM2A, Laforin, EC=3.1.3.48, EC=3.1.3.16, Lafora PTPase, LAFPTPase
Purification:	Protein-G affinity chromatography

Target Details

Target:	EPM2A
---------	-------

Target Details

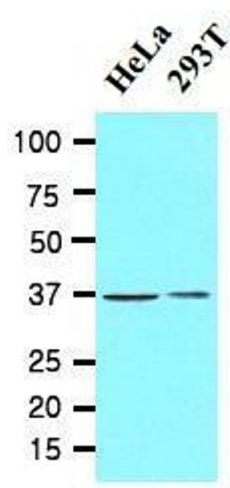
Alternative Name:	Laforin (EPM2A Products)
Background:	Epilepsy, progressive myoclonus type 2A (EPM2A), also known as laforin, is a dual-specificity phosphatase that associates with polyribosomes. The protein may be involved in the control of glycogen metabolism, particularly in monitoring for and preventing the formation of poorly branched glycogen molecules. Defects in EPM2A are a cause of progressive myoclonic epilepsy type 2(EPM2), also known as Lafora disease. EPM2 is an autosomal recessive and severe form of adolescent-onset progressive epilepsy.Synonyms: EC=3.1.3.16, EC=3.1.3.48, EPM2A, LAFPTPase, Lafora PTPase, Laforin
Gene ID:	7957
UniProt:	O95278
Pathways:	Cellular Glucan Metabolic Process

Application Details

Application Notes:	ELISA. Western blot (1: 1,000 - 1: 2,000). Other applications not tested. Optimal dilutions are dependent on conditions and should be determined by the user.
Restrictions:	For Research Use only

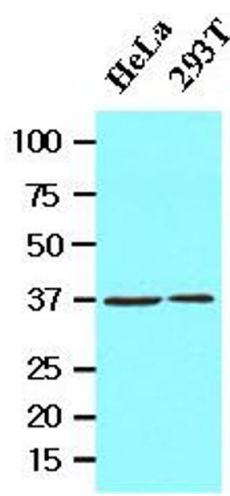
Handling

Format:	Liquid
Concentration:	1.0 mg/mL
Buffer:	PBS, pH 7.4, containing 0.09 % sodium azide
Preservative:	Sodium azide
Precaution of Use:	This product contains sodium azide: a POISONOUS AND HAZARDOUS SUBSTANCE which should be handled by trained staff only.
Storage:	4 °C/-20 °C
Storage Comment:	Store the antibody undiluted at 2-8 °C for up to two weeks or (in aliquots) at -20 °C for longer. Avoid repeated freezing and thawing. Shelf life: one year from despatch.
Expiry Date:	12 months



Western Blotting

Image 1.



Western Blotting

Image 2.