

Datasheet for ABIN336110  
**anti-14-3-3 theta antibody (N-Term)**

## 3 Images

[Go to Product page](#)

## Overview

Quantity:	0.1 mL
Target:	14-3-3 theta (YWHAQ)
Binding Specificity:	AA 1-245, N-Term
Reactivity:	Human
Host:	Mouse
Clonality:	Monoclonal
Conjugate:	This 14-3-3 theta antibody is un-conjugated
Application:	Western Blotting (WB), Immunohistochemistry (Paraffin-embedded Sections) (IHC (p)), Enzyme Immunoassay (EIA)

## Product Details

Immunogen:	Recombinant human 14-3-3 tau (aa 1-245) purified from E. coli
Clone:	AT1A1
Isotype:	IgG1
Specificity:	The antibody recognizes Human 14-3-3 protein theta (tau). Other species not tested.
Characteristics:	Synonyms: 14-3-3 protein tau, 14-3-3 protein T-cell, YWHAQ, Protein HS1
Purification:	Protein-G affinity chromatography

## Target Details

Target:	14-3-3 theta (YWHAQ)
---------	----------------------

## Target Details

Alternative Name:	14-3-3 Protein theta ( <a href="#">YWHAQ Products</a> )
Background:	The 14-3-3 family of proteins plays a key regulatory role in signal transduction, checkpoint control, apoptotic and nutrient-sensing pathways. 14-3-3 proteins are highly conserved and ubiquitously expressed. There are at least seven isoforms, beta, gamma, epsilon, sigma, zeta, tau and eta that have been identified in mammals. The 14-3-3 tau, a subtype of the 14-3-3 family of proteins, was found in T Cells, brain and testes. This 14-3-3 tau is upregulated in patients with amyotrophic lateral sclerosis. Synonyms: 14-3-3 protein T-cell, 14-3-3 protein tau, Protein HS1, YWHAQ
Gene ID:	10971
UniProt:	<a href="#">P27348</a>
Pathways:	<a href="#">Apoptosis</a> , <a href="#">Myometrial Relaxation and Contraction</a>

## Application Details

Application Notes:	ELISA. Western blot (1/1,000-1/2,000). Immunohistochemistry on Paraffin Sections (10 µg/mL). This YWHAQ antibody was validated for use in immunohistochemistry on a panel of 21 formalin-fixed, paraffin-embedded (FFPE) human tissues after heat induced antigen retrieval in pH 6.0 citrate buffer. After incubation with the primary antibody, slides were incubated with biotinylated secondary antibody, followed by alkaline phosphatase-streptavidin and chromogen. Other applications not tested.  Optimal dilutions are dependent on conditions and should be determined by the user.
Restrictions:	For Research Use only

## Handling

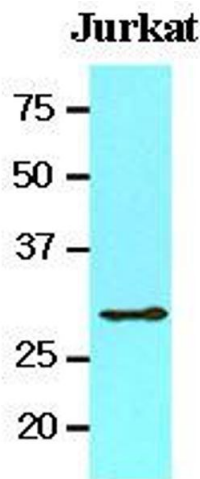
Format:	Liquid
Concentration:	1.0 mg/mL
Buffer:	PBS, pH 7.4, containing 0.09 % Sodium Azide
Preservative:	Sodium azide
Precaution of Use:	This product contains sodium azide: a POISONOUS AND HAZARDOUS SUBSTANCE which should be handled by trained staff only.
Storage:	4 °C/-20 °C
Storage Comment:	Store the antibody undiluted at 2-8 °C for up to two weeks or (in aliquots) at -20 °C or -70 °C for

Handling

longer. Avoid repeated freezing and thawing.  
Shelf life: one year from despatch.

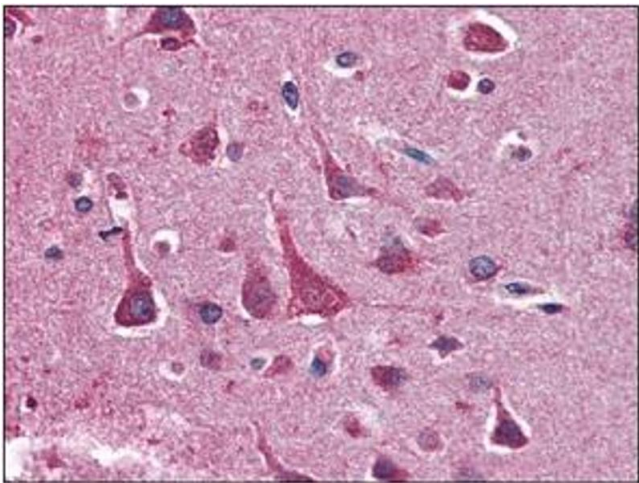
Expiry Date: 12 months

Images



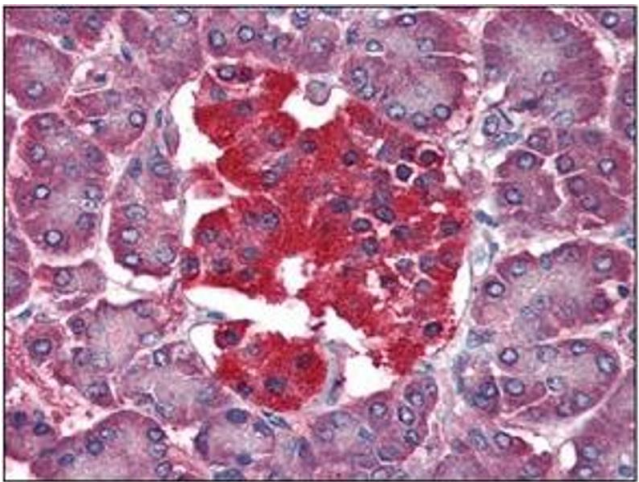
Western Blotting

Image 1.



Immunohistochemistry

Image 2.



Immunohistochemistry

Image 3.