



[Go to Product page](#)

Datasheet for ABIN337036

anti-OB Cadherin antibody (Intracellular)

2 Images

Overview

Quantity:	50 µg
Target:	OB Cadherin (CDH11)
Binding Specificity:	Intracellular
Reactivity:	Human, Mouse
Host:	Rabbit
Clonality:	Polyclonal
Conjugate:	This OB Cadherin antibody is un-conjugated
Application:	Western Blotting (WB), ELISA, Immunohistochemistry (IHC), Immunohistochemistry (Frozen Sections) (IHC (fro)), Immunohistochemistry (Paraffin-embedded Sections) (IHC (p))

Product Details

Brand:	IHC-plus™
Immunogen:	Recombinant protein derived from the intracellular domain of the human Cadherin 11 protein. Type of Immunogen: Recombinant protein
Isotype:	IgG
Specificity:	Recognizes human Cadherin 11 at ~110kD. An additional band at ~130kD (presumably the Cadherin 11 precursor) may also be observed. Some crossreactivity with other Cadherins is observed in approximately the following order: Cadherin11>>R-Cadherin>Cadherin 8>>N-Cadherin=P-Cadherin. No crossreactivity with Cadherin 6 or E-Cadherin has been observed.
Purification:	Immunoaffinity purified

Target Details

Target:	OB Cadherin (CDH11)
Alternative Name:	CDH11 / Cadherin 11 (CDH11 Products)
Background:	Name/Gene ID: CDH11 Family: Cadherin Synonyms: CDH11, CAD11, Cadherin 11, Cadherin-11, CDHOB, OSF-4, Osteoblast cadherin, OB, OB-cadherin, Ventral neural cadherin, Vnc
Gene ID:	1009
UniProt:	P55287

Application Details

Application Notes:	Approved: ELISA (0.1 - 1 µg/mL), IHC, IHC-Fr, IHC-P (5 µg/mL), WB (1 - 2 µg/mL) Usage: Immunohistochemistry: This antibody was validated for use in immunohistochemistry on a panel of 21 formalin-fixed, paraffin-embedded (FFPE) human tissues after heat induced antigen retrieval in pH 6.0 citrate buffer. After incubation with the primary antibody, slides were incubated with biotinylated secondary antibody, followed by alkaline phosphatase-streptavidin and chromogen. The stained slides were evaluated by a pathologist to confirm staining specificity. The optimal working concentration for this antibody was determined to be 5 µg/mL. Positive control: MDA. MB231 cells (human) and mouse L fibroblast lysates.
Comment:	Target Species of Antibody: Human
Restrictions:	For Research Use only

Handling

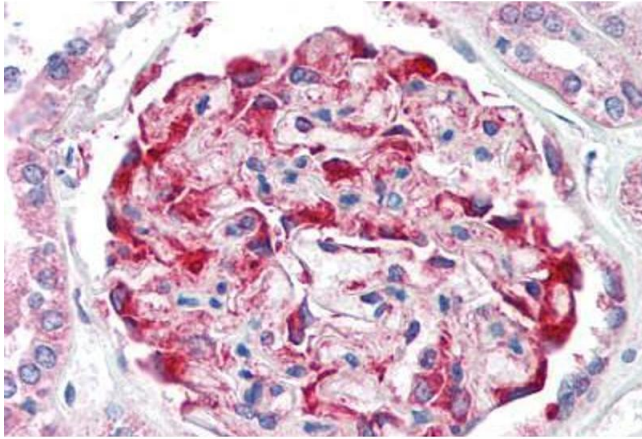
Format:	Liquid
Concentration:	Lot specific
Buffer:	PBS, pH 7.4, 0.09 % sodium azide.
Preservative:	Sodium azide
Precaution of Use:	This product contains Sodium azide: a POISONOUS AND HAZARDOUS SUBSTANCE which should be handled by trained staff only.
Handling Advice:	Avoid repeat freeze-thaw cycles.

Handling

Storage: 4 °C, -20 °C

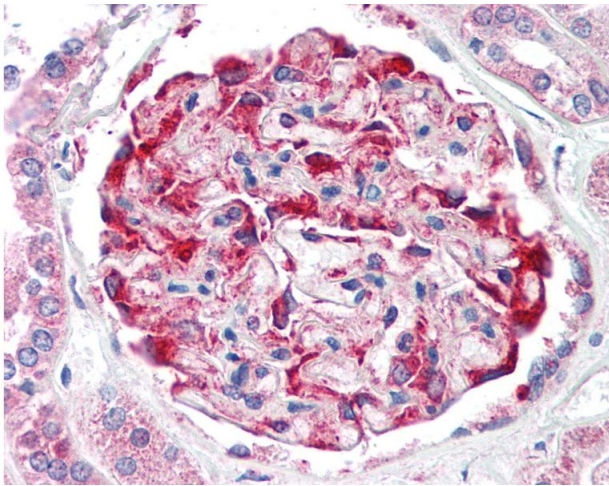
Storage Comment: Short term: 4°C. Long term: Store at -20°C. Avoid freeze-thaw cycles.

Images



Immunohistochemistry (Paraffin-embedded Sections)

Image 1. Human Kidney (formalin-fixed, paraffin-embedded) stained with CDH11 antibody ABIN337036 at 5 ug/ml followed by biotinylated goat anti-rabbit IgG secondary antibody ABIN481713, alkaline phosphatase-streptavidin and chromogen.



Immunohistochemistry

Image 2. Anti-CDH11 antibody IHC of human kidney. Immunohistochemistry of formalin-fixed, paraffin-embedded tissue after heat-induced antigen retrieval. Antibody concentration 5 ug/ml.