

Datasheet for ABIN337043
anti-CKS1 antibody (C-Term)

2 Images

[Go to Product page](#)

Overview

Quantity:	50 µg
Target:	CKS1 (CKS1B)
Binding Specificity:	C-Term
Reactivity:	Human
Host:	Mouse
Clonality:	Monoclonal
Conjugate:	This CKS1 antibody is un-conjugated
Application:	Western Blotting (WB), Immunohistochemistry (IHC), Immunohistochemistry (Paraffin-embedded Sections) (IHC (p))

Product Details

Brand:	IHC-plus™
Immunogen:	Synthetic peptide derived from the C-terminal region of the human Cks1 protein. Type of Immunogen: Synthetic peptide
Clone:	4G12G7
Isotype:	IgG1 kappa
Specificity:	Recognizes the 11kD human Cks1 protein. No reactivity was observed with a Cks2 recombinant protein. Cross reactivity with an unknown protein at ~35kD has been observed in Western blots of HeLa cell lysates. Reactivity has been confirmed with a Cks1 recombinant protein as well as HeLa cell lysates. IHC reactivity was confirmed with formalin-fixed, paraffin-embedded (FFPE)

Product Details

human tonsil sections.

Purification: Protein A purified

Target Details

Target: CKS1 (CKS1B)

Alternative Name: CKS1B / CKS1 ([CKS1B Products](#))

Background: Name/Gene ID: CKS1B
Subfamily: CKS

Synonyms: CKS1B, CDC28 protein kinase 1, CKS-1, CDC28 protein kinase 1B, Ckshs1, PNAS-18, PNAS-143, PNAS-16, CDC2-associated protein CKS1, CKS1

Gene ID: 1163

UniProt: [P61024](#)

Pathways: [Mitotic G1-G1/S Phases](#), [Inositol Metabolic Process](#)

Application Details

Application Notes: Approved: IHC, IHC-P (5 µg/mL), WB (1 - 3 µg/mL)

Usage: Immunohistochemistry: This antibody was validated for use in immunohistochemistry on a panel of 21 formalin-fixed, paraffin-embedded (FFPE) human tissues after heat induced antigen retrieval in pH 6.0 citrate buffer. After incubation with the primary antibody, slides were incubated with biotinylated secondary antibody, followed by alkaline phosphatase-streptavidin and chromogen. The stained slides were evaluated by a pathologist to confirm staining specificity. The optimal working concentration for this antibody was determined to be 5 µg/mL.

Comment: Target Species of Antibody: Human

Restrictions: For Research Use only

Handling

Format: Liquid

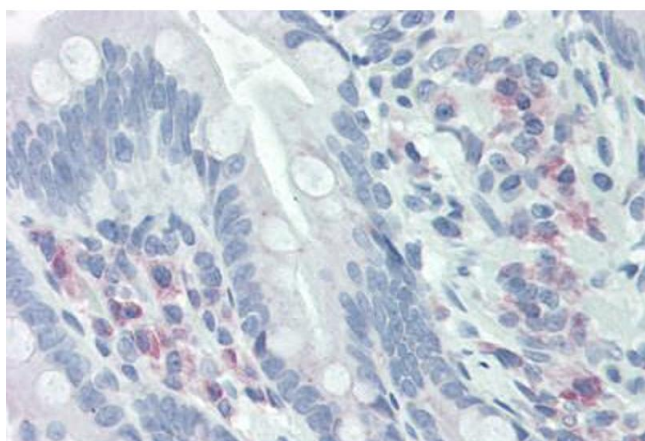
Concentration: Lot specific

Buffer: PBS, pH 7.4, 0.09 % sodium azide.

Handling

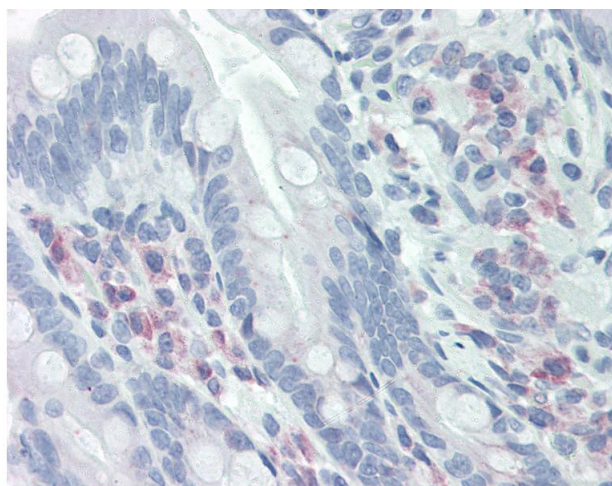
Preservative:	Sodium azide
Precaution of Use:	This product contains Sodium azide: a POISONOUS AND HAZARDOUS SUBSTANCE which should be handled by trained staff only.
Storage:	4 °C,-20 °C
Storage Comment:	4°C or -20°C, Avoid freeze-thaw cycles.

Images



Immunohistochemistry (Paraffin-embedded Sections)

Image 1. Human Small Intestine (formalin-fixed, paraffin-embedded) stained with CKS1B antibody ABIN337043 at 5 ug/ml followed by biotinylated anti-mouse IgG secondary antibody ABIN481714, alkaline phosphatase-streptavidin and chromogen.



Immunohistochemistry

Image 2. Anti-CKS1B / CKS1 antibody IHC of human small intestine. Immunohistochemistry of formalin-fixed, paraffin-embedded tissue after heat-induced antigen retrieval. Antibody concentration 5 ug/ml.