

Datasheet for ABIN337048

anti-Occludin antibody (C-Term)



[Go to Product page](#)

2 Images

1 Publication

Overview

Quantity:	50 µg
Target:	Occludin (OCLN)
Binding Specificity:	C-Term
Reactivity:	Human, Mouse, Rat, Dog
Host:	Mouse
Clonality:	Monoclonal
Conjugate:	This Occludin antibody is un-conjugated
Application:	Western Blotting (WB), ELISA, Immunohistochemistry (IHC), Immunofluorescence (IF), Immunohistochemistry (Paraffin-embedded Sections) (IHC (p))

Product Details

Brand:	IHC-plus™
Immunogen:	GST fusion protein consisting of the C-terminal region (~150aa) of human occludin. Type of Immunogen: Fusion protein
Clone:	OC-3F10
Isotype:	IgG1 kappa
Specificity:	Recognizes mammalian Occludin Protein. Species cross-reactivity: human, mouse, rat and canine.
Purification:	Protein A purified

Target Details

Target:	Occludin (OCLN)
Alternative Name:	OCLN / Occludin (OCLN Products)
Background:	Name/Gene ID: OCLN Synonyms: OCLN, Occludin, BLCPMG
Gene ID:	100506658
UniProt:	Q16625
Pathways:	Cell-Cell Junction Organization , Hepatitis C

Application Details

Application Notes:	Approved: ELISA (0.1 - 1 µg/mL), IF (2 - 3 µg/mL), IHC, IHC-P (10 µg/mL), WB (0.1 - 1 µg/mL) Usage: Immunohistochemistry: This antibody was validated for use in immunohistochemistry on a panel of 21 formalin-fixed, paraffin-embedded (FFPE) human tissues after heat induced antigen retrieval in pH 6.0 citrate buffer. After incubation with the primary antibody, slides were incubated with biotinylated secondary antibody, followed by alkaline phosphatase-streptavidin and chromogen. The stained slides were evaluated by a pathologist to confirm staining specificity. The optimal working concentration for this antibody was determined to be 10 µg/mL. Positive control: T84 cell line (human intestinal epithelium), MDCK cells (canine kidney), rat liver and Caco-2 cells (human colon adenocarcinoma). Does not appear to detect the most highly phosphorylated form of the occludin protein when tested on Caco-2 cells.
Comment:	Target Species of Antibody: Human
Restrictions:	For Research Use only

Handling

Format:	Liquid
Concentration:	Lot specific
Buffer:	PBS, pH 7.4, 0.09 % sodium azide.
Preservative:	Sodium azide
Precaution of Use:	This product contains Sodium azide: a POISONOUS AND HAZARDOUS SUBSTANCE which should be handled by trained staff only.

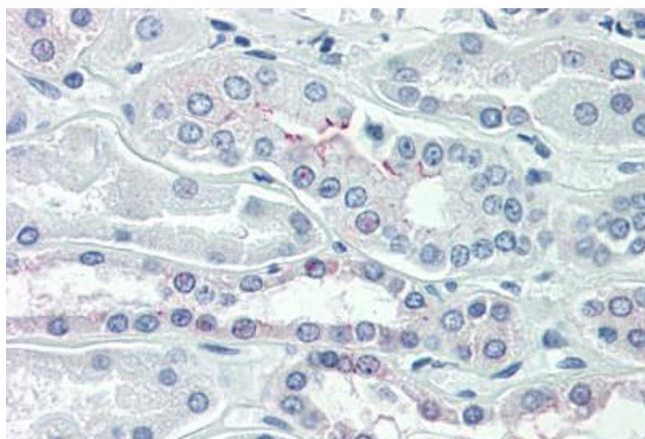
Handling

Handling Advice:	Avoid repeat freeze-thaw cycles.
Storage:	4 °C,-20 °C
Storage Comment:	Short term: 4°C. Long term: Store at -20°C. Avoid freeze-thaw cycles.

Publications

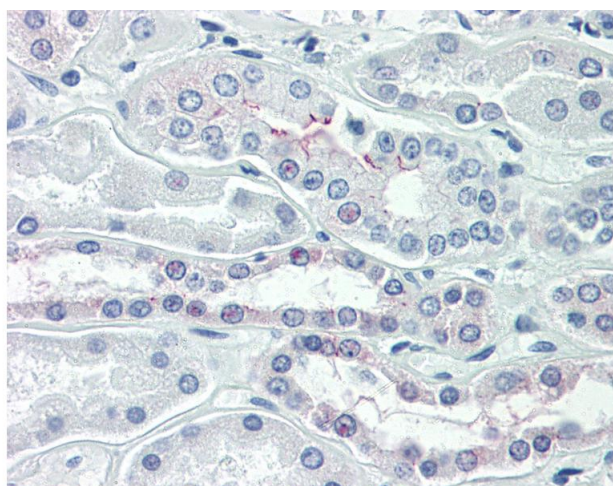
Product cited in: Krueger, Härtig, Reichenbach, Bechmann, Michalski: "Blood-brain barrier breakdown after embolic stroke in rats occurs without ultrastructural evidence for disrupting tight junctions." in: **PLoS ONE**, Vol. 8, Issue 2, pp. e56419, (2013) ([PubMed](#)).

Images



Immunohistochemistry (Paraffin-embedded Sections)

Image 1. Human Kidney (formalin-fixed, paraffin-embedded) stained with OCLN antibody ABIN337048 at 10 ug/ml followed by biotinylated anti-mouse IgG secondary antibody ABIN481714, alkaline phosphatase-streptavidin and chromogen.



Immunohistochemistry

Image 2. Anti-Occludin antibody IHC of human kidney. Immunohistochemistry of formalin-fixed, paraffin-embedded tissue after heat-induced antigen retrieval. Antibody concentration 10 ug/ml.