

Datasheet for ABIN337059
anti-Claudin 5 antibody

2 Images

[Go to Product page](#)

Overview

Quantity:	50 µg
Target:	Claudin 5 (CLDN5)
Reactivity:	Rat, Mouse
Host:	Mouse
Clonality:	Monoclonal
Conjugate:	This Claudin 5 antibody is un-conjugated
Application:	ELISA, Immunohistochemistry (IHC), Western Blotting (WB), Immunohistochemistry (Paraffin-embedded Sections) (IHC (p))

Product Details

Brand:	IHC-plus™
Immunogen:	Synthetic peptide derived from the mouse Claudin-5 protein. Type of Immunogen: Synthetic peptide
Isotype:	IgG1
Specificity:	Recognizes rat endogenous Claudin-5 protein at ~22-24kD. Species cross-reactivity: WB: mouse, IHC: human.
Purification:	Protein A purified

Target Details

Target:	Claudin 5 (CLDN5)
---------	-------------------

Target Details

Alternative Name:	CLDN5 / Claudin 5 (CLDN5 Products)
Background:	Name/Gene ID: CLDN5 Family: Claudin Synonyms: CLDN5, BEC1, AWAL, Claudin-5, CPETRL1, TMDVCF, TMVCF, Claudin 5
Gene ID:	7122
UniProt:	O00501
Pathways:	Hepatitis C

Application Details

Application Notes:	Approved: ELISA (0.1 - 1 µg/mL), IHC, IHC-P (5 - 10 µg/mL), WB (1 - 3 µg/mL) Usage: Immunohistochemistry: This antibody was validated for use in immunohistochemistry on a panel of 21 formalin-fixed, paraffin-embedded (FFPE) human tissues after heat induced antigen retrieval in pH 6.0 citrate buffer. After incubation with the primary antibody, slides were incubated with biotinylated secondary antibody, followed by alkaline phosphatase-streptavidin and chromogen. The stained slides were evaluated by a pathologist to confirm staining specificity. The optimal working concentration for this antibody was determined to be 5-10 µg/mL. Positive control: Rat lung, kidney, and small intestine homogenates and mouse lung homogenates.
Comment:	Target Species of Antibody: Mouse
Restrictions:	For Research Use only

Handling

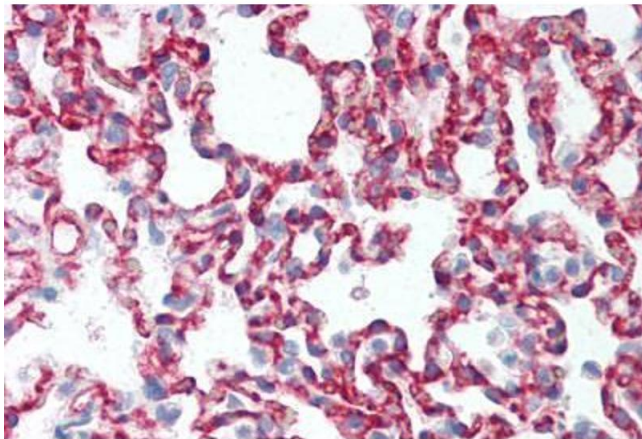
Format:	Liquid
Concentration:	Lot specific
Buffer:	PBS, pH 7.4, 0.09 % sodium azide.
Preservative:	Sodium azide
Precaution of Use:	This product contains Sodium azide: a POISONOUS AND HAZARDOUS SUBSTANCE which should be handled by trained staff only.
Handling Advice:	Avoid freeze-thaw cycles.

Handling

Storage: 4 °C, -20 °C

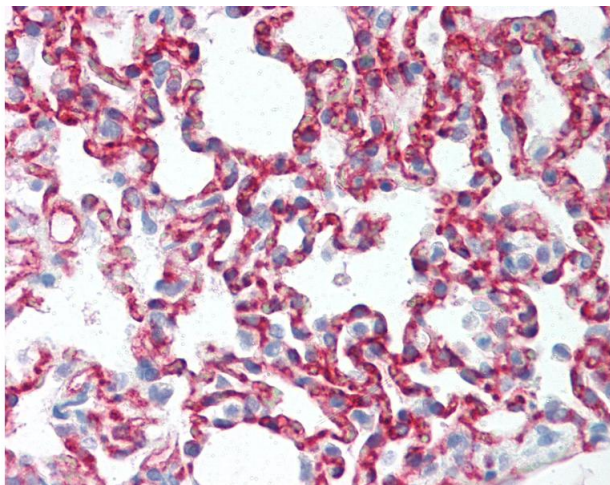
Storage Comment: Short term: 4°C. Long term: Store at -20°C. Avoid freeze-thaw cycles.

Images



Immunohistochemistry (Paraffin-embedded Sections)

Image 1. Rat Lung (formalin-fixed, paraffin-embedded) stained with CLDN5 antibody ABIN337059 at 5-10 ug/ml followed by biotinylated anti-mouse IgG secondary antibody ABIN481714, alkaline phosphatase-streptavidin and chromogen.



Immunohistochemistry

Image 2. Anti-CLDN5 / Claudin 5 antibody IHC of rat lung. Immunohistochemistry of formalin-fixed, paraffin-embedded tissue after heat-induced antigen retrieval. Antibody concentration 10 ug/ml.