

Datasheet for ABIN337068  
**anti-SRSF1 antibody (N-Term)**

## 2 Images

[Go to Product page](#)

## Overview

Quantity:	50 µg
Target:	SRSF1
Binding Specificity:	N-Term
Reactivity:	Human, Mouse, Rat
Host:	Mouse
Clonality:	Monoclonal
Conjugate:	This SRSF1 antibody is un-conjugated
Application:	Western Blotting (WB), Immunohistochemistry (IHC), Immunofluorescence (IF), Immunoprecipitation (IP), Immunohistochemistry (Paraffin-embedded Sections) (IHC (p))

## Product Details

Brand:	IHC-plus™
Immunogen:	Recombinant SF2/ASF protein.  Type of Immunogen: Recombinant protein
Isotype:	IgG2b
Specificity:	Recognizes the N-terminal portion (aa1-97) of the SF2/ASF protein comprising the RNA-recognition motif (RRM1). Reactivity is not affected by phosphorylation state of SF2/ASF.  Species cross-reactivity: Human (HeLa cells), mouse and rat. Cross-reactivity expected with other species because SF2/ASF is highly conserved.
Purification:	Protein A purified

## Target Details

Target:	SRSF1
Alternative Name:	SFRS1 / SF2 ( <a href="#">SRSF1 Products</a> )
Background:	Name/Gene ID: SRSF1  Synonyms: SRSF1, Alternative-splicing factor 1, ASF, SF2, SF2p33, SFRS1, Splicing factor 2, ASF-1, SR splicing factor 1, SRp30a
Gene ID:	6426
UniProt:	<a href="#">Q07955</a>
Pathways:	<a href="#">Ribonucleoprotein Complex Subunit Organization</a>

## Application Details

Application Notes:	Approved: IF, IHC, IHC-P (5 µg/mL), IP, WB (0.5 - 1 µg/mL)  Usage: Immunohistochemistry: This antibody was validated for use in immunohistochemistry on a panel of 21 formalin-fixed, paraffin-embedded (FFPE) human tissues after heat induced antigen retrieval in pH 6.0 citrate buffer. After incubation with the primary antibody, slides were incubated with biotinylated secondary antibody, followed by alkaline phosphatase-streptavidin and chromogen. The stained slides were evaluated by a pathologist to confirm staining specificity. The optimal working concentration for this antibody was determined to be 5 µg/mL.
Comment:	Target Species of Antibody: Human
Restrictions:	For Research Use only

## Handling

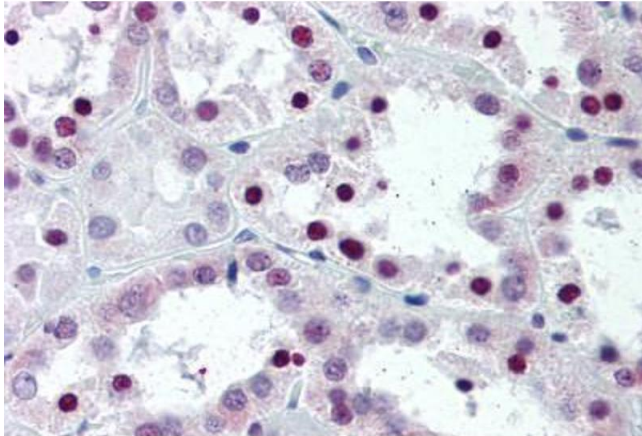
Format:	Liquid
Concentration:	Lot specific
Buffer:	PBS, pH 7.4, 0.09 % sodium azide.
Preservative:	Sodium azide
Precaution of Use:	This product contains Sodium azide: a POISONOUS AND HAZARDOUS SUBSTANCE which should be handled by trained staff only.
Handling Advice:	Avoid repeat freeze-thaw cycles.

## Handling

Storage: 4 °C, -20 °C

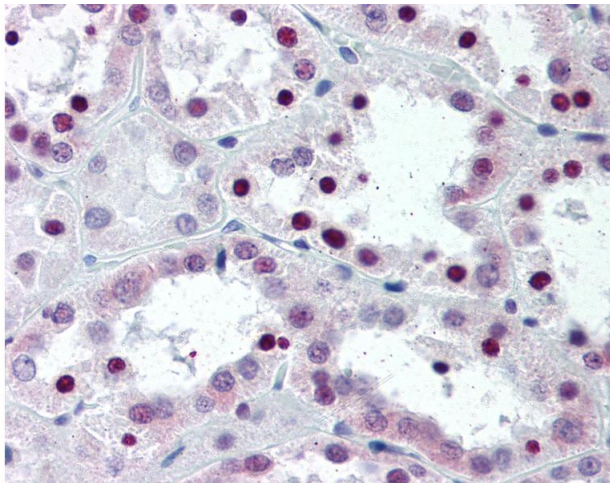
Storage Comment: Short term: 4°C. Long term: Store at -20°C. Avoid freeze-thaw cycles.

## Images



### Immunohistochemistry (Paraffin-embedded Sections)

**Image 1.** Human Kidney (formalin-fixed, paraffin-embedded) stained with SFRS1 antibody ABIN337068 at 5 ug/ml followed by biotinylated anti-mouse IgG secondary antibody ABIN481714, alkaline phosphatase-streptavidin and chromogen.



### Immunohistochemistry

**Image 2.** Anti-SF2 antibody IHC of human kidney. Immunohistochemistry of formalin-fixed, paraffin-embedded tissue after heat-induced antigen retrieval. Antibody concentration 5 ug/ml.