

Datasheet for ABIN337070 **anti-LRP1 antibody**

2 Images



[Go to Product page](#)

Overview

Quantity:	50 µg
Target:	LRP1
Reactivity:	Human
Host:	Mouse
Clonality:	Monoclonal
Conjugate:	This LRP1 antibody is un-conjugated
Application:	Western Blotting (WB), Immunohistochemistry (IHC), ELISA, Flow Cytometry (FACS), Immunoprecipitation (IP), Immunohistochemistry (Paraffin-embedded Sections) (IHC (p)), Immunohistochemistry (Frozen Sections) (IHC (fro))

Product Details

Brand:	IHC-plus™
Immunogen:	Purified alpha 2 macroglobulin receptor.
Isotype:	IgG1
Specificity:	Recognizes human CD91, a type I membrane protein which is also known as the alpha 2 macroglobulin receptor (alpha 2 MR). Recognizes an epitope in the extracellular region of the 500kD alpha chain.
Purification:	Protein G purified

Target Details

Target:	LRP1
---------	------

Target Details

Alternative Name:	LRP1 / CD91 (LRP1 Products)
Background:	Name/Gene ID: LRP1 Synonyms: LRP1, Apolipoprotein E receptor, CD91 antigen, CD91, A2MR, IGFBP3R, Alpha-2-macroglobulin receptor, TGFBR5, Type V tgf-beta receptor, APOER, APR, LRP, LRP-1
Gene ID:	4035
UniProt:	Q07954
Pathways:	Smooth Muscle Cell Migration , Platelet-derived growth Factor Receptor Signaling

Application Details

Application Notes:	Approved: ELISA, Flo, IHC, IHC-Fr, IHC-P (5 - 10 µg/mL), IP, WB Usage: Immunohistochemistry: This antibody was validated for use in immunohistochemistry on a panel of 21 formalin-fixed, paraffin-embedded (FFPE) human tissues after heat induced antigen retrieval in pH 6.0 citrate buffer. After incubation with the primary antibody, slides were incubated with biotinylated secondary antibody, followed by alkaline phosphatase-streptavidin and chromogen. The stained slides were evaluated by a pathologist to confirm staining specificity. The optimal working concentration for this antibody was determined to be 5-10 µg/mL. Flow Cytometry: 1:50-1:100. Use 10 µL to label 10 ⁶ cells in 100 µL. Western Blot: non-reducing conditions. Positive control: Liver.
Comment:	Target Species of Antibody: Human
Restrictions:	For Research Use only

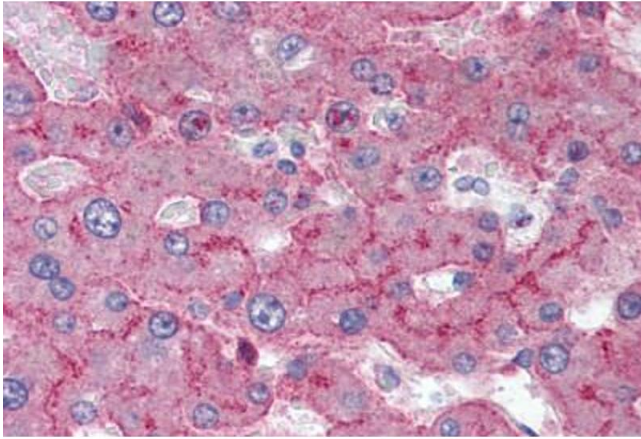
Handling

Format:	Liquid
Concentration:	Lot specific
Buffer:	PBS, pH 7.4, 0.09 % sodium azide.
Preservative:	Sodium azide
Precaution of Use:	This product contains Sodium azide: a POISONOUS AND HAZARDOUS SUBSTANCE which should be handled by trained staff only.
Storage:	4 °C, -20 °C

Handling

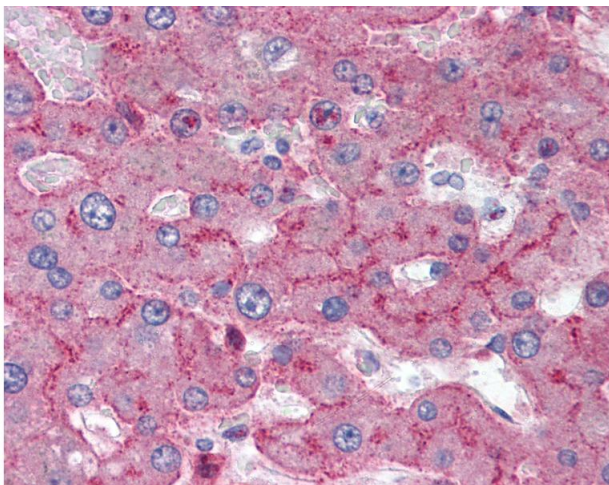
Storage Comment: Short term: 4°C
Long term: Add glycerol (40-50%) -20°C.

Images



Immunohistochemistry (Paraffin-embedded Sections)

Image 1. Human Liver (formalin-fixed, paraffin-embedded) stained with LRP1 antibody ABIN337070 at 5-10 ug/ml followed by biotinylated anti-mouse IgG secondary antibody ABIN481714, alkaline phosphatase-streptavidin and chromogen.



Immunohistochemistry

Image 2. Anti-LRP1 / Low Density LRP antibody IHC of human liver. Immunohistochemistry of formalin-fixed, paraffin-embedded tissue after heat-induced antigen retrieval. Antibody concentration 10 ug/ml.