

Datasheet for ABIN337089
anti-LHX2 antibody (AA 239-254)

2 Images

[Go to Product page](#)

Overview

Quantity:	50 µg
Target:	LHX2
Binding Specificity:	AA 239-254
Reactivity:	Human
Host:	Rabbit
Clonality:	Polyclonal
Conjugate:	This LHX2 antibody is un-conjugated
Application:	ELISA, Immunohistochemistry (IHC), Immunohistochemistry (Frozen Sections) (IHC (fro)), Immunohistochemistry (Paraffin-embedded Sections) (IHC (p))

Product Details

Brand:	IHC-plus™
Immunogen:	Synthetic peptide corresponding to aa239-254 of human LHX2/Lim2. Type of Immunogen: Synthetic peptide
Isotype:	IgG
Specificity:	Recognizes the human Lim homeobox containing transcription factor LHX2. No significant sequence homology with other proteins. Species cross-reactivity: rodent.
Purification:	Affinity purified

Target Details

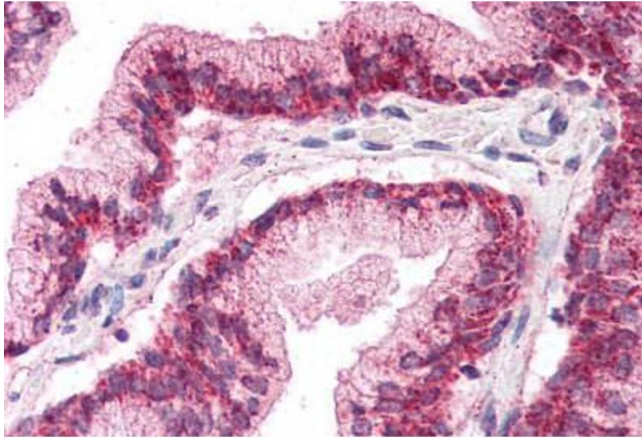
Target:	LHX2
Alternative Name:	LHX2 (LHX2 Products)
Background:	Name/Gene ID: LHX2 Synonyms: LHX2, Homeobox protein LH-2, LH-2, LIM homeobox protein 2, LIM/homeobox protein Lhx2, HLhx2, LIM homeobox 2, LH2, LIM HOX gene 2
Gene ID:	9355
UniProt:	P50458
Pathways:	Tube Formation

Application Details

Application Notes:	Approved: ELISA, IHC, IHC-Fr (1:200 - 1:1000), IHC-P (5 µg/mL) Usage: Immunohistochemistry: This antibody was validated for use in immunohistochemistry on a panel of 21 formalin-fixed, paraffin-embedded (FFPE) human tissues after heat induced antigen retrieval in pH 6.0 citrate buffer. After incubation with the primary antibody, slides were incubated with biotinylated secondary antibody, followed by alkaline phosphatase-streptavidin and chromogen. The stained slides were evaluated by a pathologist to confirm staining specificity. The optimal working concentration for this antibody was determined to be 5 µg/mL.
Comment:	Target Species of Antibody: Human
Restrictions:	For Research Use only

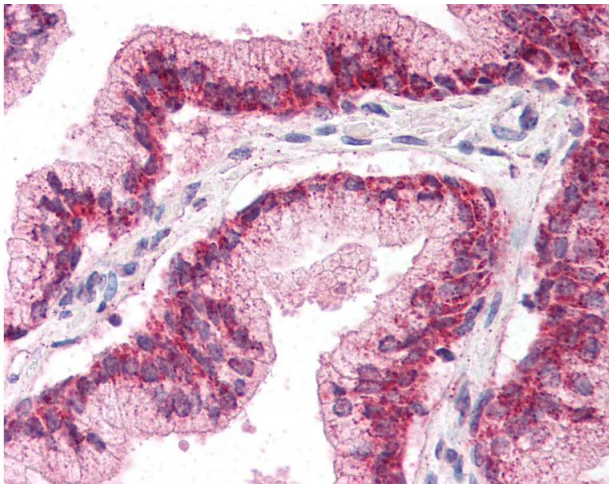
Handling

Format:	Liquid
Concentration:	Lot specific
Buffer:	PBS, pH 7.4. No preservative added.
Preservative:	Without preservative
Handling Advice:	Avoid repeat freeze-thaw cycles.
Storage:	4 °C, -20 °C
Storage Comment:	Short term: 4°C. Long term: Store at -20°C. Avoid freeze-thaw cycles.



Immunohistochemistry (Paraffin-embedded Sections)

Image 1. Human Prostate (formalin-fixed, paraffin-embedded) stained with LHX2 antibody ABIN337089 at 5 ug/ml followed by biotinylated goat anti-rabbit IgG secondary antibody ABIN481713, alkaline phosphatase-streptavidin and chromogen.



Immunohistochemistry

Image 2. Anti-LHX2 antibody IHC of human prostate. Immunohistochemistry of formalin-fixed, paraffin-embedded tissue after heat-induced antigen retrieval. Antibody concentration 5 ug/ml.