

Datasheet for ABIN337136  
**anti-VPS25 antibody (N-Term)**[Go to Product page](#)

## 2 Images

## Overview

Quantity:	50 µg
Target:	VPS25
Binding Specificity:	N-Term
Reactivity:	Human
Host:	Rabbit
Clonality:	Polyclonal
Conjugate:	This VPS25 antibody is un-conjugated
Application:	Western Blotting (WB), ELISA, Immunohistochemistry (IHC), Immunohistochemistry (Paraffin-embedded Sections) (IHC (p))

## Product Details

Brand:	IHC-plus™
Immunogen:	Synthetic peptide from human VPS25.  Type of Immunogen: Synthetic peptide
Specificity:	Synthetic peptide corresponding to N-terminal residues of human VPS25(Vacuolar protein sorting protein 25).
Purification:	Immunoaffinity purified

## Target Details

Target:	VPS25
---------	-------

## Target Details

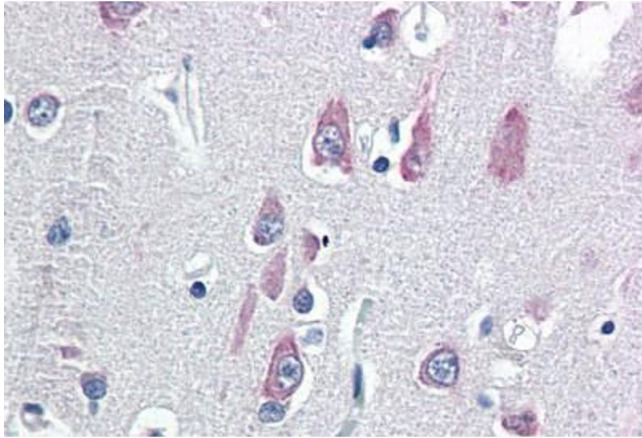
Alternative Name:	VPS25 ( <a href="#">VPS25 Products</a> )
Background:	Name/Gene ID: VPS25  Synonyms: VPS25, DERP9, EAP20, ESCRT-II complex subunit VPS25, FAP20, HVps25
Gene ID:	84313
UniProt:	<a href="#">Q9BRG1</a>

## Application Details

Application Notes:	Approved: ELISA, IHC, IHC-P (5 µg/mL), WB (1 µg/mL)  Usage: Immunohistochemistry: This antibody was validated for use in immunohistochemistry on a panel of 21 formalin-fixed, paraffin-embedded (FFPE) human tissues after heat induced antigen retrieval in pH 6.0 citrate buffer. After incubation with the primary antibody, slides were incubated with biotinylated secondary antibody, followed by alkaline phosphatase-streptavidin and chromogen. The stained slides were evaluated by a pathologist to confirm staining specificity. The optimal working concentration for this antibody was determined to be 5 µg/mL.
Comment:	Target Species of Antibody: Human
Restrictions:	For Research Use only

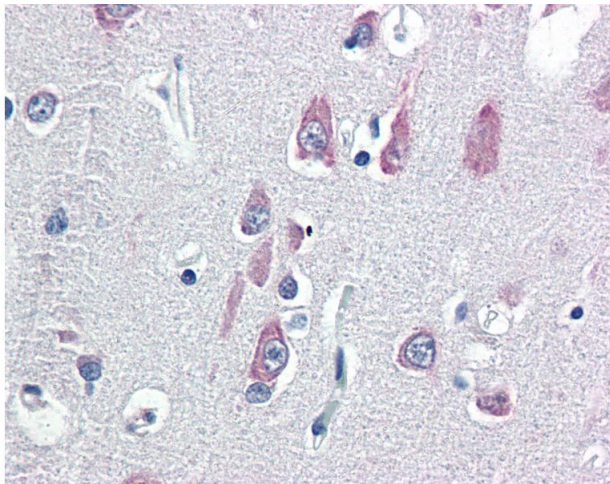
## Handling

Format:	Liquid
Concentration:	Lot specific
Buffer:	PBS, 0.01 % sodium azide, 50 % glycerol.
Preservative:	Sodium azide
Precaution of Use:	This product contains Sodium azide: a POISONOUS AND HAZARDOUS SUBSTANCE which should be handled by trained staff only.
Handling Advice:	Avoid repeated freezing and thawing.
Storage:	4 °C, -20 °C
Storage Comment:	4°C or -20°C, Avoid freeze-thaw cycles.



#### Immunohistochemistry (Paraffin-embedded Sections)

**Image 1.** Human Brain, Cortex (formalin-fixed, paraffin-embedded) stained with VPS25 antibody ABIN337136 at 5 ug/ml followed by biotinylated goat anti-rabbit IgG secondary antibody ABIN481713, alkaline phosphatase-streptavidin and chromogen.



#### Immunohistochemistry

**Image 2.** Anti-VPS25 antibody IHC of human brain, cortex. Immunohistochemistry of formalin-fixed, paraffin-embedded tissue after heat-induced antigen retrieval. Antibody concentration 5 ug/ml.