

Datasheet for ABIN337157
anti-STAT5 A/B antibody (pTyr694)



[Go to Product page](#)

2 Images

Overview

Quantity:	50 µg
Target:	STAT5 A/B
Binding Specificity:	pTyr694
Reactivity:	Human, Mouse, Rat
Host:	Rabbit
Clonality:	Polyclonal
Conjugate:	This STAT5 A/B antibody is un-conjugated
Application:	Western Blotting (WB), ELISA, Immunohistochemistry (IHC), Immunohistochemistry (Paraffin-embedded Sections) (IHC (p))

Product Details

Brand:	IHC-plus™
Immunogen:	Synthetic peptide corresponding to residues surrounding Y694 of mouse STAT5 alpha protein. Type of Immunogen: Synthetic peptide
Specificity:	A BLAST analysis was used to suggest cross-reactivity with Stat5 alpha from human, mouse and rat based on 100 % homology with the immunizing sequence. Cross-reactivity with Stat5 alpha from other sources has not been determined.
Purification:	Immunoaffinity purified

Target Details

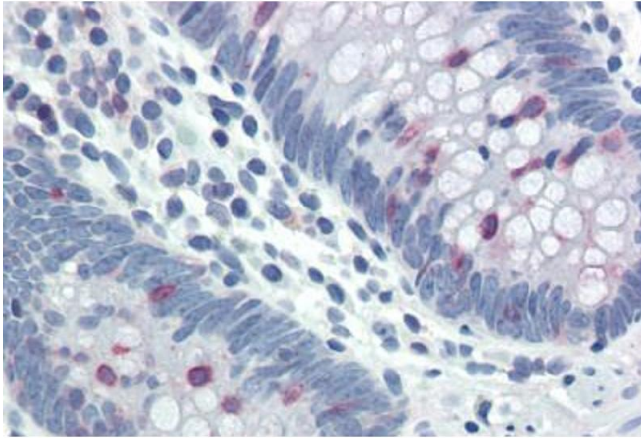
Target:	STAT5 A/B
Alternative Name:	STAT5A+B (STAT5 A/B Products)
Background:	This antibody detects: STAT5 A+B

Application Details

Application Notes:	Approved: ELISA (1:25000), IHC, IHC-P (20 - 40 µg/mL), WB (1:500 - 1:2000) Usage: Immunohistochemistry: This antibody was validated for use in immunohistochemistry on a panel of 21 formalin-fixed, paraffin-embedded (FFPE) human tissues after heat induced antigen retrieval in pH 6.0 citrate buffer. After incubation with the primary antibody, slides were incubated with biotinylated secondary antibody, followed by alkaline phosphatase-streptavidin and chromogen. The stained slides were evaluated by a pathologist to confirm staining specificity. The optimal working concentration for this antibody was determined to be 20-40 µg/mL. Western Blot: Expect a band approximately 91 kD in size corresponding to phosphorylated Stat5a protein in the appropriate cell lysate or extract. This phosphospecific polyclonal antibody reacts with mouse Stat5a pY694 and shows minimal reactivity by ELISA against the nonphosphorylated form of the immunizing peptide.
Comment:	Target Species of Antibody: Mouse
Restrictions:	For Research Use only

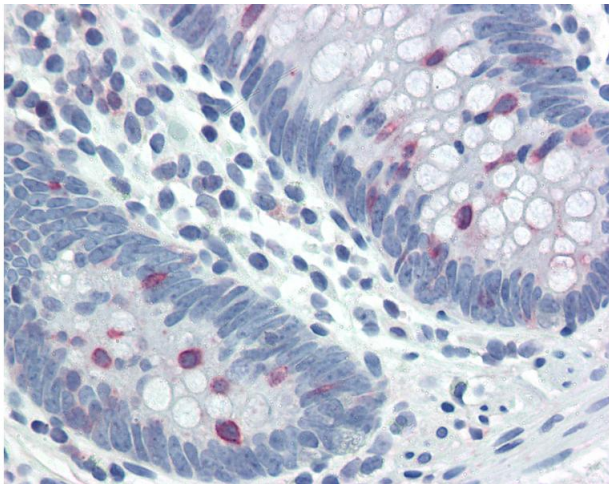
Handling

Format:	Liquid
Concentration:	Lot specific
Buffer:	0.02 M potassium phosphate, 0.15 M sodium chloride, pH 7.2, 0.01 % sodium azide.
Preservative:	Sodium azide
Precaution of Use:	This product contains Sodium azide: a POISONOUS AND HAZARDOUS SUBSTANCE which should be handled by trained staff only.
Handling Advice:	Avoid repeated freezing and thawing.
Storage:	4 °C, -20 °C
Storage Comment:	4°C or -20°C, Avoid freeze-thaw cycles.



Immunohistochemistry (Paraffin-embedded Sections)

Image 1. Human Colon (formalin-fixed, paraffin-embedded) stained with STAT5A/STAT5B antibody ABIN337157 at 20-40 ug/ml followed by biotinylated goat anti-rabbit IgG secondary antibody ABIN481713, alkaline phosphatase-streptavidin and chromogen.



Immunohistochemistry

Image 2. Anti-STAT5 antibody IHC of human colon. Immunohistochemistry of formalin-fixed, paraffin-embedded tissue after heat-induced antigen retrieval. Antibody concentration 40 ug/ml.