

Datasheet for ABIN337174
anti-Cullin 1 antibody (C-Term)

2 Images

[Go to Product page](#)

Overview

Quantity:	50 µg
Target:	Cullin 1 (CUL1)
Binding Specificity:	C-Term
Reactivity:	Human
Host:	Mouse
Clonality:	Monoclonal
Conjugate:	This Cullin 1 antibody is un-conjugated
Application:	Western Blotting (WB), ELISA, Immunohistochemistry (IHC), Immunoprecipitation (IP), Immunohistochemistry (Paraffin-embedded Sections) (IHC (p))

Product Details

Brand:	IHC-plus™
Immunogen:	A synthetic peptide corresponding to an 11 amino acid sequence at the C-terminus of the human CUL-1 protein. Type of Immunogen: Synthetic peptide
Isotype:	IgG1 kappa
Specificity:	Recognizes Cullin 1. Reacts specifically with the ~86kD CUL-1 protein and does not cross-react with the related CUL-2 protein. This antibody is confirmed to be reactive with human. Reactivity is confirmed from extracts of IMR90 (human fibroblasts) and Wi-38 cells.
Purification:	Protein A purified

Target Details

Target:	Cullin 1 (CUL1)
Alternative Name:	Cullin 1 / CUL1 (CUL1 Products)
Background:	Name/Gene ID: CUL1 Synonyms: CUL1, Cullin 1, Cullin-1, CUL-1
Gene ID:	8454
UniProt:	Q13616
Pathways:	Cell Division Cycle , Hedgehog Signaling , Mitotic G1-G1/S Phases , Regulation of Cell Size

Application Details

Application Notes:	Approved: ELISA (0.1 - 1 µg/mL), IHC, IHC-P (10 µg/mL), IP, WB (1 - 3 µg/mL) Usage: Immunohistochemistry: This antibody was validated for use in immunohistochemistry on a panel of 21 formalin-fixed, paraffin-embedded (FFPE) human tissues after heat induced antigen retrieval in pH 6.0 citrate buffer. After incubation with the primary antibody, slides were incubated with biotinylated secondary antibody, followed by alkaline phosphatase-streptavidin and chromogen. The stained slides were evaluated by a pathologist to confirm staining specificity. The optimal working concentration for this antibody was determined to be 10 µg/mL. Immunoprecipitation: 5-10 µg/ IP reaction.
Comment:	Target Species of Antibody: Human
Restrictions:	For Research Use only

Handling

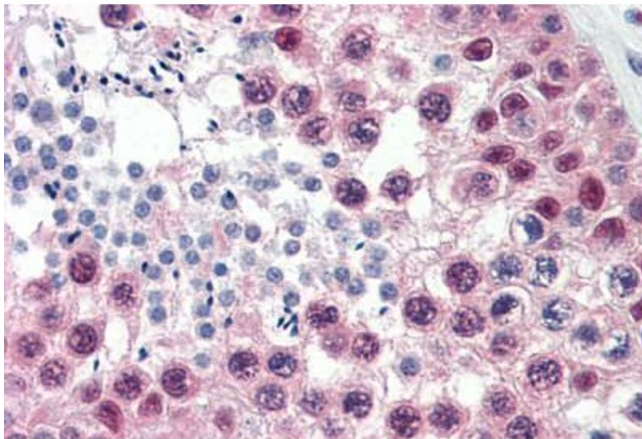
Format:	Liquid
Concentration:	Lot specific
Buffer:	PBS, pH 7.4, 0.1 % sodium azide.
Preservative:	Sodium azide
Precaution of Use:	This product contains Sodium azide: a POISONOUS AND HAZARDOUS SUBSTANCE which should be handled by trained staff only.
Handling Advice:	Avoid repeat freeze-thaw cycles.

Handling

Storage: 4 °C, -20 °C

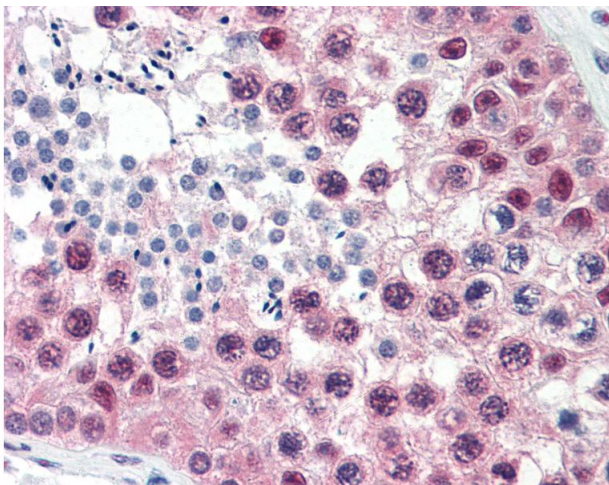
Storage Comment: Short term: 4°C. Long term: Store at -20°C. Avoid freeze-thaw cycles.

Images



Immunohistochemistry (Paraffin-embedded Sections)

Image 1. Human Testis (formalin-fixed, paraffin-embedded) stained with CUL1 antibody ABIN337174 at 10 ug/ml followed by biotinylated anti-mouse IgG secondary antibody ABIN481714, alkaline phosphatase-streptavidin and chromogen.



Immunohistochemistry

Image 2. Anti-CUL1 / Cullin 1 antibody IHC of human testis. Immunohistochemistry of formalin-fixed, paraffin-embedded tissue after heat-induced antigen retrieval. Antibody concentration 10 ug/ml.