

Datasheet for ABIN337194

**anti-HSPG2 antibody****2** Images[Go to Product page](#)

## Overview

Quantity:	50 µL
Target:	HSPG2
Reactivity:	Human, Cow
Host:	Mouse
Clonality:	Monoclonal
Conjugate:	This HSPG2 antibody is un-conjugated
Application:	Western Blotting (WB), Immunohistochemistry (IHC), ELISA, Immunoprecipitation (IP), Immunohistochemistry (Paraffin-embedded Sections) (IHC (p)), Immunohistochemistry (Frozen Sections) (IHC (fro))

## Product Details

Brand:	IHC-plus™
Immunogen:	Bovine corneal endothelial cells.  Type of Immunogen: Cells
Clone:	A71
Isotype:	IgG1 kappa
Specificity:	Highly specific for bovine perlecan. The epitope is located in domain I. No cross-reactivity with other connective tissue proteins (vitronectin, fibronectin, elastin, collagen, laminin). Species cross-reactivity: Human.
Purification:	Protein A/G purified

## Target Details

Target:	HSPG2
Alternative Name:	HSPG2 / Perlecan ( <a href="#">HSPG2 Products</a> )
Background:	Name/Gene ID: HSPG2  Synonyms: HSPG2, Endorepellin (domain V region), HSPG, Heparan sulfate proteoglycan 2, Perlecan, Perlecan proteoglycan, SJA, SJS1, PRCAN, SJS
Gene ID:	3339
UniProt:	<a href="#">P98160</a>
Pathways:	<a href="#">Glycosaminoglycan Metabolic Process</a> , <a href="#">Lipid Metabolism</a>

## Application Details

Application Notes:	Approved: ELISA (1:4000), IHC, IHC-Fr, IHC-P (5 µg/mL), IP, WB (1:50)  Usage: Immunohistochemistry: This antibody was validated for use in immunohistochemistry on a panel of 21 formalin-fixed, paraffin-embedded (FFPE) human tissues after heat induced antigen retrieval in pH 6.0 citrate buffer. After incubation with the primary antibody, slides were incubated with biotinylated secondary antibody, followed by alkaline phosphatase-streptavidin and chromogen. The stained slides were evaluated by a pathologist to confirm staining specificity. The optimal working concentration for this antibody was determined to be 5 µg/mL.
Comment:	Target Species of Antibody: Bovine
Restrictions:	For Research Use only

## Handling

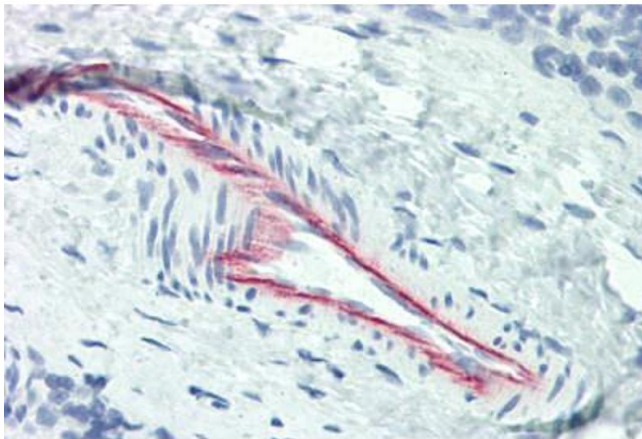
Format:	Liquid
Concentration:	Lot specific
Buffer:	PBS, pH 7.4, 15 mM sodium azide
Preservative:	Sodium azide
Precaution of Use:	This product contains Sodium azide: a POISONOUS AND HAZARDOUS SUBSTANCE which should be handled by trained staff only.
Handling Advice:	Avoid repeat freeze-thaw cycles.

## Handling

Storage: 4 °C, -20 °C

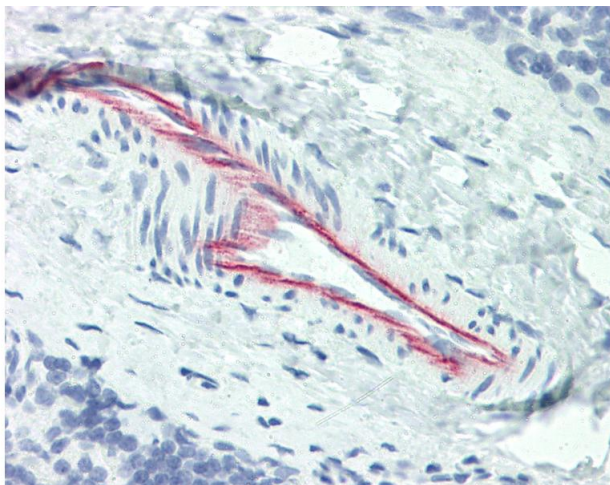
Storage Comment: Short term: 4°C. Long term: Store at -20°C. Avoid freeze-thaw cycles.

## Images



### Immunohistochemistry (Paraffin-embedded Sections)

**Image 1.** Human Thymus, Vessel (formalin-fixed, paraffin-embedded) stained with HSPG2 antibody ABIN337194 at 5 ug/ml followed by biotinylated anti-mouse IgG secondary antibody ABIN481714, alkaline phosphatase-streptavidin and chromogen.



### Immunohistochemistry

**Image 2.** Anti-HSPG2 / Perlecan antibody IHC of human thymus, vessel. Immunohistochemistry of formalin-fixed, paraffin-embedded tissue after heat-induced antigen retrieval. Antibody concentration 5 ug/ml.