

Datasheet for ABIN337197
anti-PEDF antibody (AA 196-347)

2 Images

[Go to Product page](#)

Overview

Quantity:	50 µg
Target:	PEDF (SERPINF1)
Binding Specificity:	AA 196-347
Reactivity:	Human
Host:	Mouse
Clonality:	Monoclonal
Conjugate:	This PEDF antibody is un-conjugated
Application:	Western Blotting (WB), Immunohistochemistry (IHC), ELISA, Immunocytochemistry (ICC), Immunohistochemistry (Paraffin-embedded Sections) (IHC (p)), Immunohistochemistry (Frozen Sections) (IHC (fro))

Product Details

Brand:	IHC-plus™
Immunogen:	Recombinant human GST-PEDF fusion protein. The sequence corresponding to aa196-347 of human PEDF tagged with GST on the N-terminal was expressed in E. coli. GST-PEDF is about 46kD on SDS-PAGE. Type of Immunogen: Recombinant protein
Isotype:	IgG2a
Specificity:	Recognizes human GST-PEDF fusion protein with a MW of ~46kD.
Purification:	Protein A purified

Target Details

Target:	PEDF (SERPINF1)
Alternative Name:	SERPINF1 / PEDF (SERPINF1 Products)
Background:	Name/Gene ID: SERPINF1 Synonyms: SERPINF1, EPC-1, OI12, PEDF, Serpin F1, PIG35, OI6
Gene ID:	5176
UniProt:	P36955

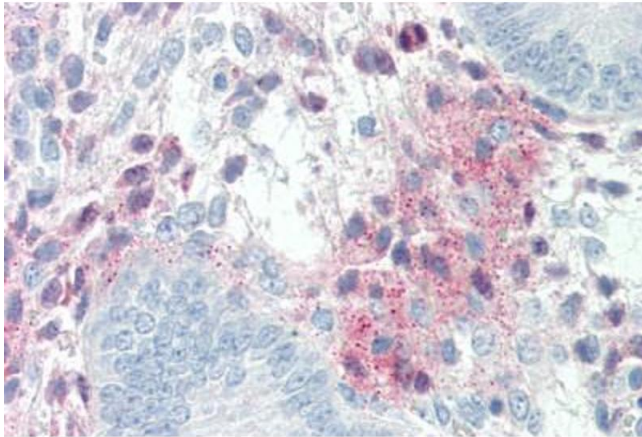
Application Details

Application Notes:	Approved: ELISA, ICC, IHC, IHC-Fr, IHC-P (5 µg/mL), WB Usage: Immunohistochemistry: This antibody was validated for use in immunohistochemistry on a panel of 21 formalin-fixed, paraffin-embedded (FFPE) human tissues after heat induced antigen retrieval in pH 6.0 citrate buffer. After incubation with the primary antibody, slides were incubated with biotinylated secondary antibody, followed by alkaline phosphatase-streptavidin and chromogen. The stained slides were evaluated by a pathologist to confirm staining specificity. The optimal working concentration for this antibody was determined to be 5 µg/mL.
Comment:	Target Species of Antibody: Human
Restrictions:	For Research Use only

Handling

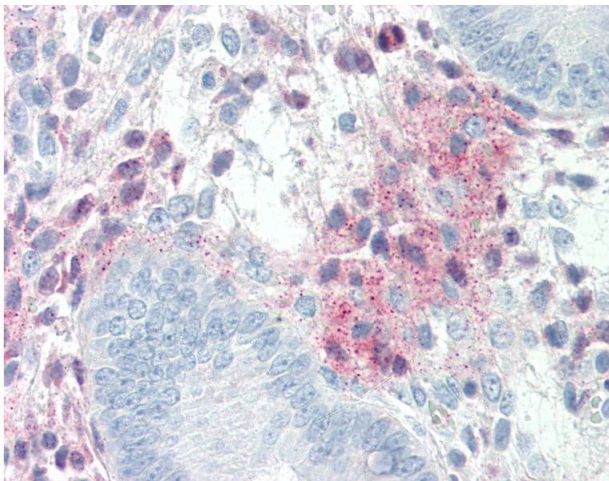
Format:	Liquid
Concentration:	Lot specific
Buffer:	PBS, pH 7.6, 0.09 % sodium azide.
Preservative:	Sodium azide
Precaution of Use:	This product contains Sodium azide: a POISONOUS AND HAZARDOUS SUBSTANCE which should be handled by trained staff only.
Handling Advice:	Avoid repeated freezing and thawing.
Storage:	4 °C,-20 °C,-80 °C
Storage Comment:	Can be stored at 4°C short term (1-2 weeks). For long term storage, aliquot and store at -20°C

or -70°C. Avoid freeze-thaw cycles.



Immunohistochemistry (Paraffin-embedded Sections)

Image 1. Human Uterus (formalin-fixed, paraffin-embedded) stained with SERPINF1 antibody ABIN337197 at 5 ug/ml followed by biotinylated anti-mouse IgG secondary antibody ABIN481714, alkaline phosphatase-streptavidin and chromogen.



Immunohistochemistry

Image 2. Anti-PEDF antibody IHC of human uterus. Immunohistochemistry of formalin-fixed, paraffin-embedded tissue after heat-induced antigen retrieval. Antibody concentration 5 ug/ml.