

Datasheet for ABIN337240

anti-CD235a/GYPA antibody (N-Term)**2** Images[Go to Product page](#)

Overview

Quantity:	50 µg
Target:	CD235a/GYPA (GYPA)
Binding Specificity:	N-Term
Reactivity:	Human
Host:	Rabbit
Clonality:	Polyclonal
Conjugate:	This CD235a/GYPA antibody is un-conjugated
Application:	Flow Cytometry (FACS), Immunohistochemistry (IHC), Western Blotting (WB), Immunohistochemistry (Paraffin-embedded Sections) (IHC (p)), ELISA

Product Details

Brand:	IHC-plus™
Immunogen:	Human Glycophorin A transmembrane protein.
Isotype:	IgG
Specificity:	Anti-human Glycophorin A (GpA) Polyclonal Antibody targets the human Glycophorin A protein. This 131 amino acid, 36 kDa, transmembrane sialoglycoprotein spans the membrane of erythrocytes once. GpA presents its N terminus at the extracellular surface of t.
Purification:	Protein G purified

Target Details

Target:	CD235a/GYPA (GYPA)
---------	--------------------

Target Details

Alternative Name:	GYPA / CD235a / Glycophorin A (GYPA Products)
Background:	<p>Name/Gene ID: GYPA</p> <p>Synonyms: GYPA, CD235a, CD235a antigen, Glycophorin A (MN blood group), Glycophorin A, GPA, Glycophorin-A, GPA, GPERik, GPSAT, Glycophorin MiV, Glycophorin SAT, HGpMiX, HGpMiXI, HGpMiV, HGpSta(C), Glycophorin Mil, GpMiIII, MN, HGpMiIII, MN sialoglycoprotein, Sialoglycoprotein alpha, Mi.V glycoprotein (24 AA), PAS-2, Glycophorin A, Glycophorin Sta type C, MNS</p>
Gene ID:	2993
UniProt:	P02724
Pathways:	Maintenance of Protein Location

Application Details

Application Notes:	<p>Approved: ELISA, Flo, IHC, IHC-P (5 µg/mL), WB</p> <p>Usage: Immunohistochemistry: This antibody was validated for use in immunohistochemistry on a panel of 21 formalin-fixed, paraffin-embedded (FFPE) human tissues after heat induced antigen retrieval in pH 6.0 citrate buffer. After incubation with the primary antibody, slides were incubated with biotinylated secondary antibody, followed by alkaline phosphatase-streptavidin and chromogen. The stained slides were evaluated by a pathologist to confirm staining specificity. The optimal working concentration for this antibody was determined to be 5 µg/mL.</p>
Comment:	Target Species of Antibody: Human
Restrictions:	For Research Use only

Handling

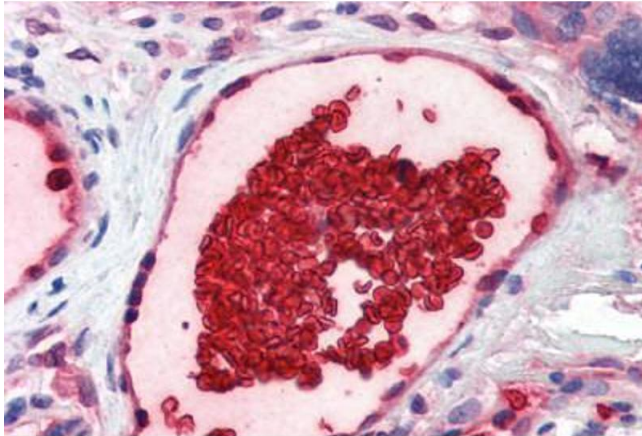
Format:	Liquid
Concentration:	Lot specific
Buffer:	PBS, 0.02 % sodium azide.
Preservative:	Sodium azide
Precaution of Use:	This product contains Sodium azide: a POISONOUS AND HAZARDOUS SUBSTANCE which should be handled by trained staff only.

Handling

Storage: 4 °C, -20 °C

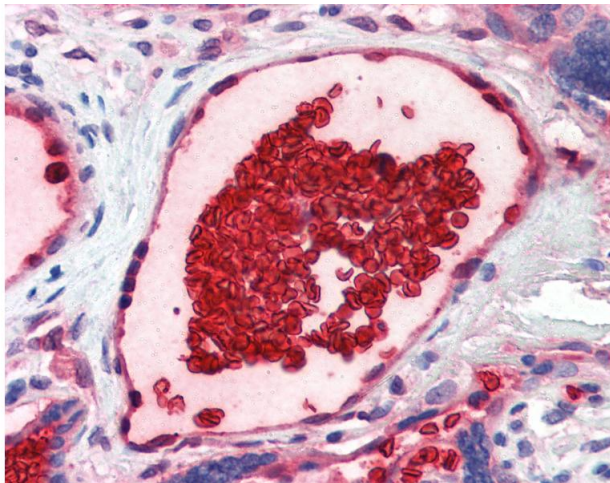
Storage Comment: Store at 4°C for short term applications. For long term storage, aliquot and store at -20°C.

Images



Immunohistochemistry (Paraffin-embedded Sections)

Image 1. Human Placenta, Vessel with Erythrocytes (formalin-fixed, paraffin-embedded) stained with GYPA antibody ABIN337240 at 5 ug/ml followed by biotinylated goat anti-rabbit IgG secondary antibody ABIN481713, alkaline phosphatase-streptavidin and chromogen.



Immunohistochemistry

Image 2. Anti-GYPA / Glycophorin A antibody IHC of human placenta, vessel with erythrocytes. Immunohistochemistry of formalin-fixed, paraffin-embedded tissue after heat-induced antigen retrieval. Antibody concentration 5 ug/ml.