

[Go to Product page](#)

Datasheet for ABIN337249

anti-Insulin antibody**2** Images

Overview

Quantity:	50 µL
Target:	Insulin (INS)
Reactivity:	Human, Mouse, Rat
Host:	Rabbit
Clonality:	Polyclonal
Conjugate:	This Insulin antibody is un-conjugated
Application:	Immunohistochemistry (IHC), Immunofluorescence (IF), Immunohistochemistry (Paraffin-embedded Sections) (IHC (p)), Flow Cytometry (FACS), Immunocytochemistry (ICC)

Product Details

Brand:	IHC-plus™
Immunogen:	Synthetic peptide (KLH-coupled) derived from the sequence of human insulin. Type of Immunogen: Synthetic peptide
Isotype:	IgG
Specificity:	Recognizes endogenous levels of total human insulin protein.
Purification:	Immunoaffinity purified

Target Details

Target:	Insulin (INS)
Alternative Name:	Insulin (INS Products)

Target Details

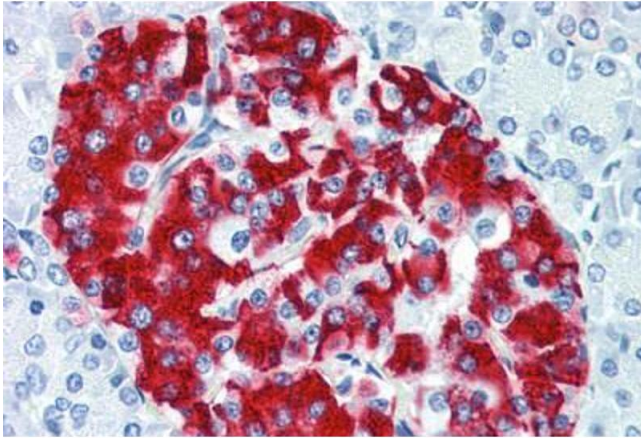
Background:	Name/Gene ID: INS Family: Hormone Synonyms: INS, IRDN, IDDM2, Preproinsulin, ILPR, Insulin, MODY10, Proinsulin
Gene ID:	3630
UniProt:	P01308
Pathways:	NF-kappaB Signaling , RTK Signaling , Positive Regulation of Peptide Hormone Secretion , Peptide Hormone Metabolism , Hormone Activity , Carbohydrate Homeostasis , ER-Nucleus Signaling , Regulation of Carbohydrate Metabolic Process , Feeding Behaviour , Autophagy , Negative Regulation of intrinsic apoptotic Signaling , Brown Fat Cell Differentiation , Positive Regulation of fat Cell Differentiation

Application Details

Application Notes:	Approved: Flo, ICC, IF, IHC, IHC-P (1:100) Usage: Immunohistochemistry: This antibody was validated for use in immunohistochemistry on a panel of 21 formalin-fixed, paraffin-embedded (FFPE) human tissues after heat induced antigen retrieval in pH 6.0 citrate buffer. After incubation with the primary antibody, slides were incubated with biotinylated secondary antibody, followed by alkaline phosphatase-streptavidin and chromogen. The stained slides were evaluated by a pathologist to confirm staining specificity. The optimal working concentration for this antibody was determined to be 1:100.
Comment:	Target Species of Antibody: Human
Restrictions:	For Research Use only

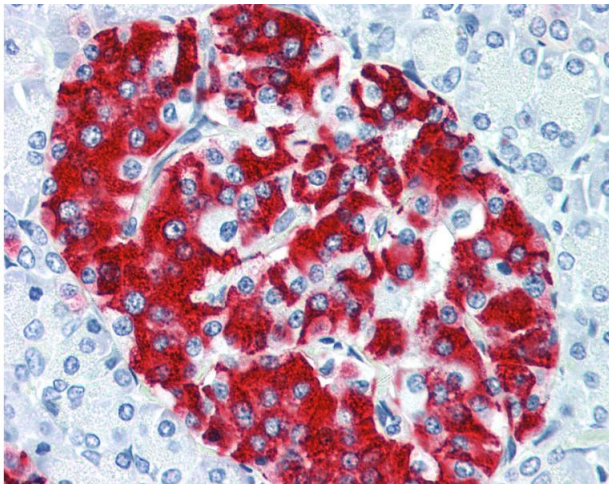
Handling

Format:	Liquid
Concentration:	Lot specific
Buffer:	10 mM HEPES, pH 7.5, 150 mM sodium chloride, 100 µg/mL BSA, 50 % glycerol.
Handling Advice:	Avoid repeat freeze-thaw cycles.
Storage:	4 °C, -20 °C
Storage Comment:	Short term: 4°C. Long term: Store at -20°C. Avoid freeze-thaw cycles.



Immunohistochemistry (Paraffin-embedded Sections)

Image 1. Human Pancreas (formalin-fixed, paraffin-embedded) stained with INS antibody ABIN337249 at 1:100 followed by biotinylated goat anti-rabbit IgG secondary antibody ABIN481713, alkaline phosphatase-streptavidin and chromogen.



Immunohistochemistry

Image 2. Anti-Insulin antibody IHC of human pancreas. Immunohistochemistry of formalin-fixed, paraffin-embedded tissue after heat-induced antigen retrieval. Antibody dilution 1:100.