

Datasheet for ABIN337263

anti-PRAS40 antibody**2** Images[Go to Product page](#)

Overview

Quantity:	50 µg
Target:	PRAS40 (AKT1S1)
Reactivity:	Human
Host:	Mouse
Clonality:	Monoclonal
Conjugate:	This PRAS40 antibody is un-conjugated
Application:	Western Blotting (WB), Immunohistochemistry (IHC), Immunohistochemistry (Paraffin-embedded Sections) (IHC (p)), Immunoprecipitation (IP)

Product Details

Brand:	IHC-plus™
Immunogen:	Recombinant full length human PRAS40 expressed in E. coli. Type of Immunogen: Recombinant protein
Isotype:	IgG1 kappa
Specificity:	Recognizes human PRAS40. Reacts with a 40kD band. This band is absent from PRAS40 siRNA-treated HeLa cell extracts. Does not cross-react with mouse.
Purification:	Protein A/G purified

Target Details

Target:	PRAS40 (AKT1S1)
---------	-----------------

Target Details

Alternative Name:	AKT1S1 / PRAS40 (AKT1S1 Products)
Background:	Name/Gene ID: AKT1S1 Synonyms: AKT1S1, PRAS40, Proline-rich AKT1 substrate 1, Lobe
Gene ID:	84335
UniProt:	Q96B36
Pathways:	Fc-epsilon Receptor Signaling Pathway , EGFR Signaling Pathway , Neurotrophin Signaling Pathway , Regulation of Cell Size , Autophagy , BCR Signaling , Warburg Effect

Application Details

Application Notes:	Approved: IHC, IHC-P (10 µg/mL), IP, WB (0.1 - 1 µg/mL) Usage: Immunohistochemistry: This antibody was validated for use in immunohistochemistry on a panel of 21 formalin-fixed, paraffin-embedded (FFPE) human tissues after heat induced antigen retrieval in pH 6.0 citrate buffer. After incubation with the primary antibody, slides were incubated with biotinylated secondary antibody, followed by alkaline phosphatase-streptavidin and chromogen. The stained slides were evaluated by a pathologist to confirm staining specificity. The optimal working concentration for this antibody was determined to be 10 µg/mL. Suitable for use in Western Blot and immunoprecipitation.: Western Blot: 0.1-1 µg/mL. Positive control: HeLa cells, Jurkat cells.
Comment:	Target Species of Antibody: Human
Restrictions:	For Research Use only

Handling

Format:	Liquid
Concentration:	Lot specific
Buffer:	PBS, pH 7.2, 0.1 % sodium azide, 1 % BSA.
Preservative:	Sodium azide
Precaution of Use:	This product contains Sodium azide: a POISONOUS AND HAZARDOUS SUBSTANCE which should be handled by trained staff only.
Storage:	4 °C, -20 °C

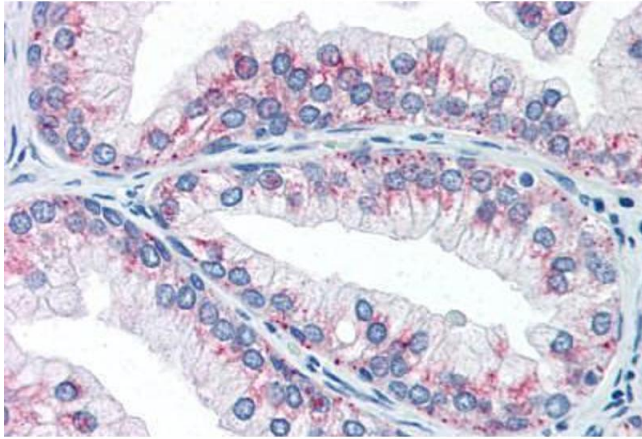
Handling

Storage Comment:

Short term: 4°C

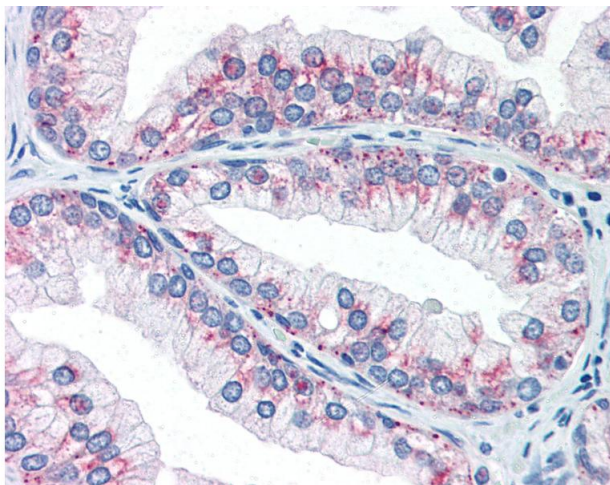
Long term: Add glycerol (40-50%) -20°C.

Images



Immunohistochemistry (Paraffin-embedded Sections)

Image 1. Human Prostate (formalin-fixed, paraffin-embedded) stained with AKT1S1 antibody ABIN337263 at 10 ug/ml followed by biotinylated anti-mouse IgG secondary antibody ABIN481714, alkaline phosphatase-streptavidin and chromogen.



Immunohistochemistry

Image 2. Anti-AKT1S1 / PRAS40 antibody IHC of human prostate. Immunohistochemistry of formalin-fixed, paraffin-embedded tissue after heat-induced antigen retrieval. Antibody concentration 10 ug/ml.