

Datasheet for ABIN337278

anti-CD35 antibody**2** Images[Go to Product page](#)

Overview

Quantity:	50 µg
Target:	CD35 (CR1)
Reactivity:	Human, Baboon, Cynomolgus, Rhesus Monkey
Host:	Mouse
Clonality:	Monoclonal
Conjugate:	This CD35 antibody is un-conjugated
Application:	Flow Cytometry (FACS), Western Blotting (WB), Immunohistochemistry (IHC), Immunohistochemistry (Paraffin-embedded Sections) (IHC (p)), Immunohistochemistry (Frozen Sections) (IHC (fro))

Product Details

Brand:	IHC-plus™
Immunogen:	Human acute monocytic leukaemia cells. Type of Immunogen: Cells
Clone:	E11
Isotype:	IgG1
Specificity:	Is a single chain cell surface glycoprotein which exists in four allotypic forms (A, B, C, D) of 190kD, 220kD, 160kD and 250kD respectively. The molecule is expressed by granulocytes, monocytes, B cells and some T cells. Functionally CD35 acts as a receptor for the C3b component of complement. Clone E11 has been reported to be suitable for use in Western Blot.

Product Details

Purification: Protein A purified

Target Details

Target: CD35 (CR1)

Alternative Name: CR1 / CD35 ([CR1 Products](#))

Background: Name/Gene ID: CR1
Subfamily: Serine S1
Family: Protease

Synonyms: CR1, C3b/C4b receptor, C3-binding protein, CD35, C3BR, Knops blood group antigen, C4BR, CD35 antigen, Complement receptor type 1, KN

Gene ID: 1378

UniProt: [P17927](#)

Pathways: [Complement System](#), [Regulation of Leukocyte Mediated Immunity](#), [Positive Regulation of Endopeptidase Activity](#)

Application Details

Application Notes: Approved: Flo (1:50 - 1:100), IHC, IHC-Fr, IHC-P (10 µg/mL), WB

Usage: The applications listed have been tested for the unmodified form of this product. Other forms have not been tested. Immunohistochemistry: This antibody was validated for use in immunohistochemistry on a panel of 21 formalin-fixed, paraffin-embedded (FFPE) human tissues after heat induced antigen retrieval in pH 6.0 citrate buffer. After incubation with the primary antibody, slides were incubated with biotinylated secondary antibody, followed by alkaline phosphatase-streptavidin and chromogen. The stained slides were evaluated by a pathologist to confirm staining specificity. The optimal working concentration for this antibody was determined to be 10 µg/mL. Flow Cytometry: Use 10 µL of the diluted antibody to label 10⁶ cells or 100 µL whole blood. Histology Positive Control Tissue: Tonsil.

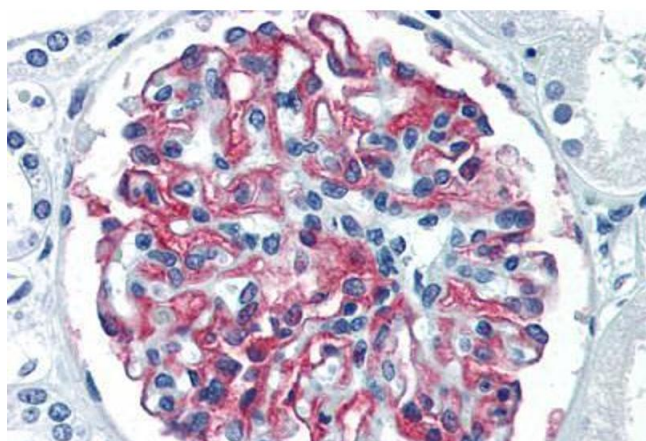
Comment: Target Species of Antibody: Human

Restrictions: For Research Use only

Handling

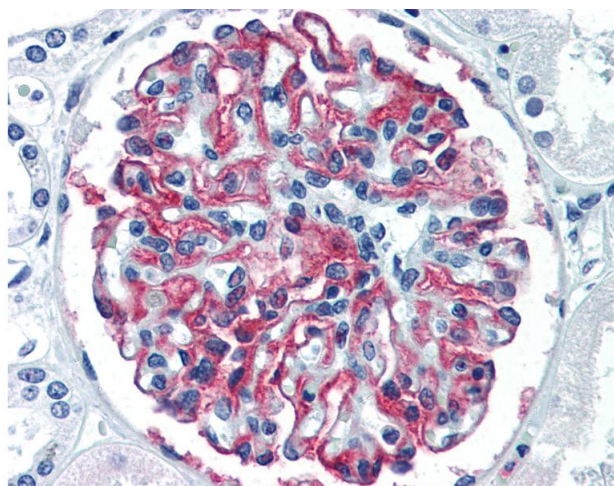
Format:	Liquid
Concentration:	Lot specific
Buffer:	PBS, pH 7.4. Sourced in TCS.
Preservative:	Azide free
Handling Advice:	Avoid repeated freezing and thawing.
Storage:	4 °C, -20 °C
Storage Comment:	4°C or -20°C, Avoid freeze-thaw cycles.

Images



Immunohistochemistry (Paraffin-embedded Sections)

Image 1. Human Kidney (formalin-fixed, paraffin-embedded) stained with CR1 antibody ABIN337278 at 10 ug/ml followed by biotinylated anti-mouse IgG secondary antibody ABIN481714, alkaline phosphatase-streptavidin and chromogen.



Immunohistochemistry

Image 2. Anti-CD35 antibody IHC of human kidney. Immunohistochemistry of formalin-fixed, paraffin-embedded tissue after heat-induced antigen retrieval. Antibody concentration 10 ug/ml. This image was taken for the unmodified form of this product. Other forms ...