

Datasheet for ABIN337280

anti-Angiotensin I Converting Enzyme 1 antibody



[Go to Product page](#)

2 Images

Overview

Quantity:	50 µg
Target:	Angiotensin I Converting Enzyme 1 (ACE)
Reactivity:	Human, Mouse, Rat, Dog, Cow, Rabbit, Monkey, Cat, Guinea Pig
Host:	Mouse
Clonality:	Monoclonal
Conjugate:	This Angiotensin I Converting Enzyme 1 antibody is un-conjugated
Application:	Western Blotting (WB), Immunohistochemistry (IHC), Immunohistochemistry (Paraffin-embedded Sections) (IHC (p))

Product Details

Brand:	IHC-plus™
Immunogen:	Angiotensin-converting enzyme (denatured) from human kidney.
Isotype:	IgG1
Specificity:	Denatured Angiotensin-converting enzyme (ACE). Species cross-reactivity: Human, monkey, rabbit, bovine, canine, feline, guinea pig, rat and mouse.
Purification:	Purified

Target Details

Target:	Angiotensin I Converting Enzyme 1 (ACE)
Alternative Name:	ACE / DCP1 / CD143 (ACE Products)

Target Details

Background:	Name/Gene ID: ACE
	Subfamily: Metallopeptidase M2
	Family: Protease
	Synonyms: ACE, ACE1, Angiotensin-converting enzyme, CD143, CD143 antigen, Carboxycathepsin, DIPEPTIDYL CARBOXYPEPTIDASE, DCP, Dipeptidyl carboxypeptidase I, ICH, Kininase II, MVCD3, Peptidyl-dipeptidase A, Peptidase P, DCP1, Dipeptidyl carboxypeptidase 1, Testicular ECA
Gene ID:	1636
UniProt:	P12821
Pathways:	ACE Inhibitor Pathway , Peptide Hormone Metabolism , Regulation of Systemic Arterial Blood Pressure by Hormones , Feeding Behaviour , Smooth Muscle Cell Migration

Application Details

Application Notes:	Approved: IHC, IHC-P (10 µg/mL), WB
	Usage: Immunohistochemistry: This antibody was validated for use in immunohistochemistry on a panel of 21 formalin-fixed, paraffin-embedded (FFPE) human tissues after heat induced antigen retrieval in pH 6.0 citrate buffer. After incubation with the primary antibody, slides were incubated with biotinylated secondary antibody, followed by alkaline phosphatase-streptavidin and chromogen. The stained slides were evaluated by a pathologist to confirm staining specificity. The optimal working concentration for this antibody was determined to be 10 µg/mL.
Comment:	Target Species of Antibody: Human
Restrictions:	For Research Use only

Handling

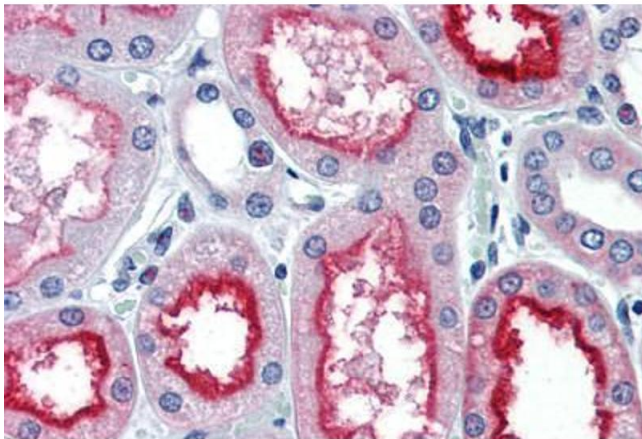
Format:	Liquid
Concentration:	Lot specific
Buffer:	Supplied as a liquid. No preservatives added.
Preservative:	Without preservative
Handling Advice:	Avoid repeat freeze-thaw cycles.

Handling

Storage: 4 °C, -20 °C

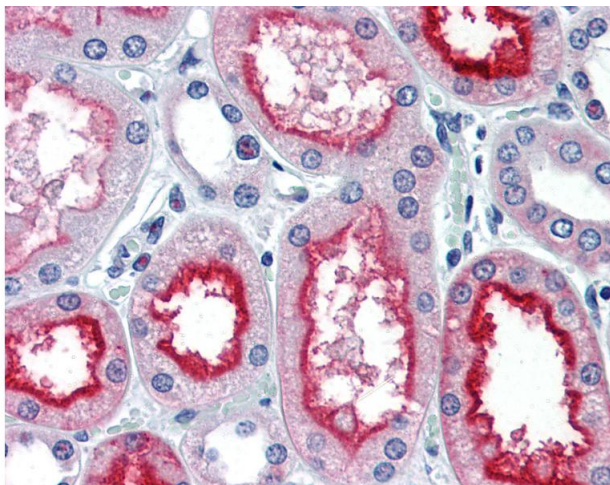
Storage Comment: Short term: 4°C. Long term: Store at -20°C. Avoid freeze-thaw cycles.

Images



Immunohistochemistry (Paraffin-embedded Sections)

Image 1. Human Kidney (formalin-fixed, paraffin-embedded) stained with ACE antibody ABIN337280 at 10 ug/ml followed by biotinylated anti-mouse IgG secondary antibody ABIN481714, alkaline phosphatase-streptavidin and chromogen.



Immunohistochemistry

Image 2. Anti-ACE antibody IHC staining of human kidney. Immunohistochemistry of formalin-fixed, paraffin-embedded tissue after heat-induced antigen retrieval. Antibody concentration 10 ug/ml.