

Datasheet for ABIN337281

anti-F2RL2 antibody[Go to Product page](#)**2** Images

Overview

Quantity:	50 µg
Target:	F2RL2
Reactivity:	Human
Host:	Mouse
Clonality:	Monoclonal
Conjugate:	This F2RL2 antibody is un-conjugated
Application:	Western Blotting (WB), ELISA, Immunohistochemistry (IHC), Immunohistochemistry (Paraffin-embedded Sections) (IHC (p))

Product Details

Brand:	IHC-plus™
Immunogen:	Human Prothrombin. Type of Immunogen: Purified protein
Isotype:	IgG2a
Specificity:	Recognizes human Prothrombin, prethrombin-1, fragment 2, meizothrombin. Inhibits clotting and prothrombin activation.
Purification:	Ion exchange chromatography

Target Details

Target:	F2RL2
---------	-------

Target Details

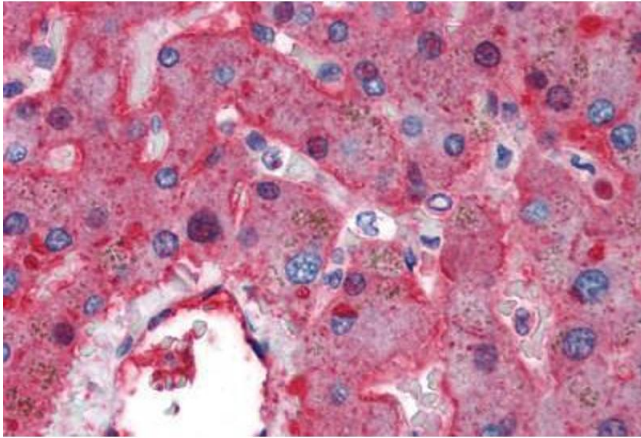
Alternative Name:	F2 / Prothrombin / Thrombin (F2RL2 Products)
Background:	Name/Gene ID: F2 Subfamily: Serine S1 Family: Protease Synonyms: F2, Prothrombin B-chain, Coagulation factor II, FACTOR II, Prothrombin, PT, RPRGL2, Serine protease, THPH1, Thrombin
Gene ID:	2147
UniProt:	P00734
Pathways:	Cell-Cell Junction Organization , Regulation of G-Protein Coupled Receptor Protein Signaling

Application Details

Application Notes:	Approved: ELISA (5 - 10 µg/mL), IHC, IHC-P (5 µg/mL), WB (10 µg/mL) Usage: Immunohistochemistry: This antibody was validated for use in immunohistochemistry on a panel of 21 formalin-fixed, paraffin-embedded (FFPE) human tissues after heat induced antigen retrieval in pH 6.0 citrate buffer. After incubation with the primary antibody, slides were incubated with biotinylated secondary antibody, followed by alkaline phosphatase-streptavidin and chromogen. The stained slides were evaluated by a pathologist to confirm staining specificity. The optimal working concentration for this antibody was determined to be 5 µg/mL.
Comment:	Target Species of Antibody: Human
Restrictions:	For Research Use only

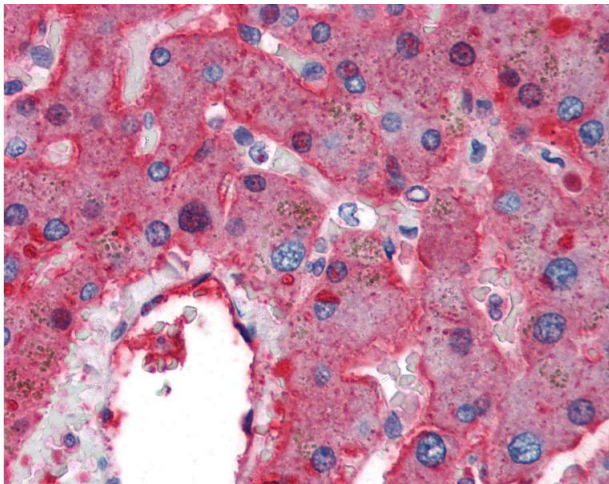
Handling

Format:	Liquid
Concentration:	Lot specific
Buffer:	Supplied as a liquid in 50 % glycerol, ddH2O. Sourced from ascites.
Handling Advice:	Avoid repeated freezing and thawing.
Storage:	4 °C,-20 °C
Storage Comment:	4°C or -20°C, Avoid freeze-thaw cycles.



Immunohistochemistry (Paraffin-embedded Sections)

Image 1. Human Liver (formalin-fixed, paraffin-embedded) stained with F2 antibody ABIN337281 at 5 ug/ml followed by biotinylated anti-mouse IgG secondary antibody ABIN481714, alkaline phosphatase-streptavidin and chromogen.



Immunohistochemistry

Image 2. Anti-F2 / Thrombin antibody IHC of human liver. Immunohistochemistry of formalin-fixed, paraffin-embedded tissue after heat-induced antigen retrieval. Antibody concentration 5 ug/ml.