

Datasheet for ABIN337288  
**anti-COPA antibody (AA 1-19)**[Go to Product page](#)

## 2 Images

## Overview

Quantity:	50 µg
Target:	COPA
Binding Specificity:	AA 1-19
Reactivity:	Human, Mouse, Rat, Dog, Horse, Cow, Zebrafish (Danio rerio), Pig, Chicken, Hamster, Bat, Monkey, Xenopus laevis
Host:	Rabbit
Clonality:	Polyclonal
Conjugate:	This COPA antibody is un-conjugated
Application:	Western Blotting (WB), Immunohistochemistry (IHC), Immunocytochemistry (ICC), Immunohistochemistry (Paraffin-embedded Sections) (IHC (p))

## Product Details

Brand:	IHC-plus™
Immunogen:	<p>Synthetic peptide: M(1)LTKFETKSARVKGLSFHP(19)C. Immunizing peptide corresponds to amino acid residues 1-19 from rat COP I alpha. Percent identity by BLAST analysis: Human, Gorilla, Monkey, Marmoset, Mouse, Rat, Hamster, Elephant, Bat, Bovine, Dog, Horse, Pig, Opossum, Chicken, Xenopus, Salmon, Stickleback, Pufferfish, Zebrafish, Seq squirt, Ant, Water flea, Tick (100%), Mosquito, Sea anemone, Rice, Beetle, Arabidopsis, Spikemoss (94%), Drosophila, Trichoplax, Grape, Castor bean (89%).</p> <p>Type of Immunogen: Synthetic peptide</p>
Isotype:	IgG

## Product Details

Specificity:	Detects rat coatomer-protein I alpha (COP I alpha). Species cross-reactivity: Human.
Predicted Reactivity:	Percent identity by BLAST analysis: Human, Gorilla, Monkey, Marmoset, Mouse, Rat, Hamster, Elephant, Bat, Bovine, Dog, Horse, Pig, Opossum, Chicken, Xenopus, Salmon, Stickleback, Pufferfish, Zebrafish, Seq squirt, Ant, Water flea, Tick (100%) Mosquito, Sea anemone, Rice, Beetle, Arabidopsis, Spikemoss (94%) Drosophila, Trichoplax, Grape, Castor bean (89%).
Purification:	Immunoaffinity purified

## Target Details

Target:	COPA
Alternative Name:	COPA / Xenin ( <a href="#">COPA Products</a> )
Background:	Name/Gene ID: COPA  Synonyms: COPA, Alpha coat protein, Alpha-COP, Alpha COP I, Alpha-coat protein, Coatomer alpha subunit, Coatomer subunit alpha, HEPCOP, HEP-COP, Xenin
Gene ID:	1314
UniProt:	<a href="#">P53621</a>
Pathways:	<a href="#">Hormone Activity</a>

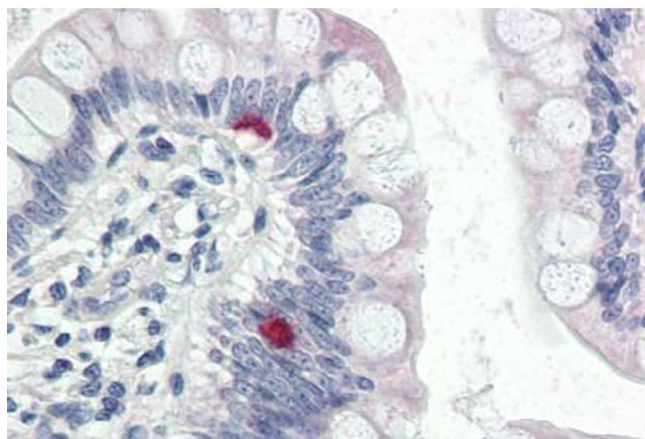
## Application Details

Application Notes:	Approved: ICC, IHC, IHC-P (5 µg/mL), WB (1 µg/mL)  Usage: Immunohistochemistry: This antibody was validated for use in immunohistochemistry on a panel of 21 formalin-fixed, paraffin-embedded (FFPE) human tissues after heat induced antigen retrieval in pH 6.0 citrate buffer. After incubation with the primary antibody, slides were incubated with biotinylated secondary antibody, followed by alkaline phosphatase-streptavidin and chromogen. The stained slides were evaluated by a pathologist to confirm staining specificity. The optimal working concentration for this antibody was determined to be 5 µg/mL. Western Blot: 1 µg/mL, detects an ~140kD protein representing COPI alpha from PC-12 cell extract. Also detects an unidentified protein at ~100kD.
Comment:	Target Species of Antibody: Human
Restrictions:	For Research Use only

## Handling

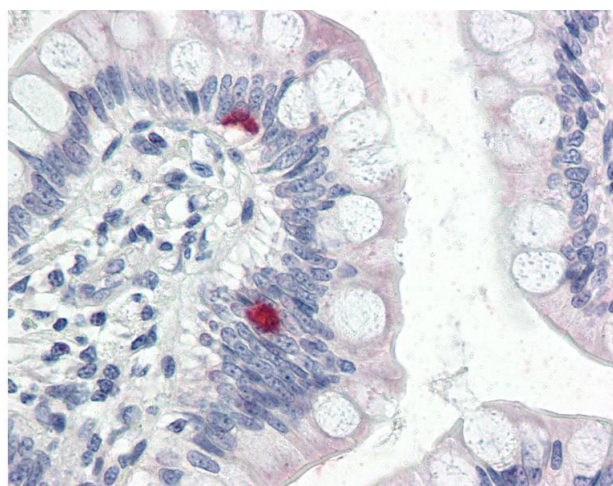
Format:	Liquid
Concentration:	Lot specific
Buffer:	PBS, 0.05 % sodium azide.
Preservative:	Sodium azide
Precaution of Use:	This product contains Sodium azide: a POISONOUS AND HAZARDOUS SUBSTANCE which should be handled by trained staff only.
Storage:	4 °C,-20 °C
Storage Comment:	Short term: 4°C. Long term: Store at -20°C. Avoid freeze-thaw cycles.

## Images



### Immunohistochemistry (Paraffin-embedded Sections)

**Image 1.** Human Small Intestine (formalin-fixed, paraffin-embedded) stained with COPA antibody ABIN337288 at 5 ug/ml followed by biotinylated goat anti-rabbit IgG secondary antibody ABIN481713, alkaline phosphatase-streptavidin and chromogen.



### Immunohistochemistry

**Image 2.** Anti-COPA antibody IHC of human small intestine. Immunohistochemistry of formalin-fixed, paraffin-embedded tissue after heat-induced antigen retrieval. Antibody concentration 5 ug/ml.