

Datasheet for ABIN337289
anti-GJC1 antibody (AA 354-367)

2 Images

[Go to Product page](#)

Overview

Quantity:	50 µg
Target:	GJC1
Binding Specificity:	AA 354-367
Reactivity:	Human, Mouse, Rat, Dog
Host:	Mouse
Clonality:	Monoclonal
Conjugate:	This GJC1 antibody is un-conjugated
Application:	Western Blotting (WB), Immunohistochemistry (IHC), Immunohistochemistry (Paraffin-embedded Sections) (IHC (p)), Immunocytochemistry (ICC)

Product Details

Brand:	IHC-plus™
Immunogen:	Synthetic peptide corresponding to aa354-367 of human connexin 45. (H-Gln-Ala-Tyr-Ser-His-Gln-Asn-Asn-Pro-His-Gly-Pro-Arg-Glu- Cys-OH) (KLH). Type of Immunogen: Synthetic peptide
Isotype:	IgG1
Specificity:	Recognizes human Connexin 45. Species cross-reactivity: rat. Species sequence homology: canine: 100 % and mouse: 92 %.
Purification:	Protein A purified

Target Details

Target:	GJC1
Alternative Name:	GJC1 / CX45 / Connexin 45 (GJC1 Products)
Background:	Name/Gene ID: GJC1 Subfamily: Connexin Family: Ion Channel Synonyms: GJC1, Connexin-45, Connexin 45, Gap junction alpha-7 protein, Gap junction gamma-1 protein, CX45, Gap junction protein alpha-6, GJA7
Gene ID:	10052
UniProt:	P36383
Pathways:	Cell-Cell Junction Organization

Application Details

Application Notes:	Approved: ICC, IHC, IHC-P (10 µg/mL), WB Usage: Immunohistochemistry: This antibody was validated for use in immunohistochemistry on a panel of 21 formalin-fixed, paraffin-embedded (FFPE) human tissues after heat induced antigen retrieval in pH 6.0 citrate buffer. After incubation with the primary antibody, slides were incubated with biotinylated secondary antibody, followed by alkaline phosphatase-streptavidin and chromogen. The stained slides were evaluated by a pathologist to confirm staining specificity. The optimal working concentration for this antibody was determined to be 10 µg/mL.
Comment:	Target Species of Antibody: Human
Restrictions:	For Research Use only

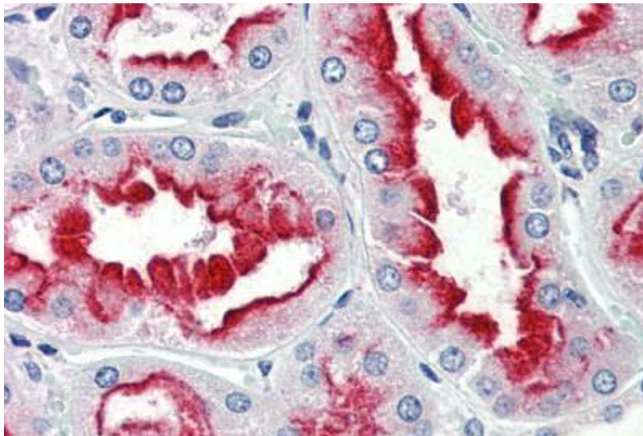
Handling

Format:	Liquid
Concentration:	Lot specific
Buffer:	PBS, pH 7.6, 0.09 % sodium azide.
Preservative:	Sodium azide
Precaution of Use:	This product contains Sodium azide: a POISONOUS AND HAZARDOUS SUBSTANCE which

Handling

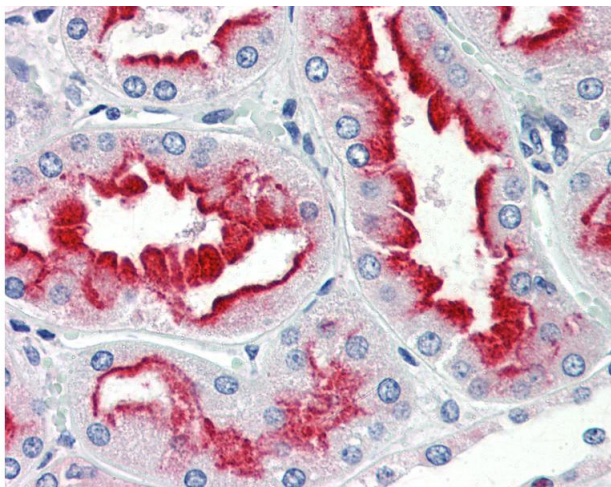
	should be handled by trained staff only.
Handling Advice:	Avoid repeated freezing and thawing.
Storage:	4 °C,-20 °C
Storage Comment:	Short term: 4°C. Long term: Store at -20°C. Avoid freeze-thaw cycles.

Images



Immunohistochemistry (Paraffin-embedded Sections)

Image 1. Human Kidney (formalin-fixed, paraffin-embedded) stained with GJC1 antibody ABIN337289 at 10 ug/ml followed by biotinylated anti-mouse IgG secondary antibody ABIN481714, alkaline phosphatase-streptavidin and chromogen.



Immunohistochemistry

Image 2. Anti-GJC1 / Connexin 45 antibody IHC of human kidney. Immunohistochemistry of formalin-fixed, paraffin-embedded tissue after heat-induced antigen retrieval. Antibody concentration 10 ug/ml.