

Datasheet for ABIN337301

anti-GLUL antibody**2** Images[Go to Product page](#)

Overview

Quantity:	50 µg
Target:	GLUL
Reactivity:	Human, Rat, Sheep
Host:	Mouse
Clonality:	Monoclonal
Conjugate:	This GLUL antibody is un-conjugated
Application:	Western Blotting (WB), ELISA, Immunohistochemistry (IHC), Immunohistochemistry (Paraffin-embedded Sections) (IHC (p))

Product Details

Brand:	IHC-plus™
Immunogen:	Glutamine synthetase purified from sheep brain. Type of Immunogen: Purified protein
Clone:	GS-6
Isotype:	IgG2a
Specificity:	Recognizes sheep Glutamine Synthase. Species cross-reactivity: rat.
Purification:	Protein A purified

Target Details

Target:	GLUL
---------	------

Target Details

Alternative Name:	GLUL / Glutamine Synthetase (GLUL Products)
Background:	Name/Gene ID: GLUL Synonyms: GLUL, GLNS, Glutamate decarboxylase, Glutamate-ammonia ligase, Glutamine synthase, GS, Glutamate--ammonia ligase, Glutamine synthetase, PIG43, PIG59
Gene ID:	2752
UniProt:	P15104
Pathways:	Positive Regulation of Peptide Hormone Secretion

Application Details

Application Notes:	Approved: ELISA, IHC, IHC-P (10 µg/mL), WB (1:1000 - 1:5000) Usage: Immunohistochemistry: This antibody was validated for use in immunohistochemistry on a panel of 21 formalin-fixed, paraffin-embedded (FFPE) human tissues after heat induced antigen retrieval in pH 6.0 citrate buffer. After incubation with the primary antibody, slides were incubated with biotinylated secondary antibody, followed by alkaline phosphatase-streptavidin and chromogen. The stained slides were evaluated by a pathologist to confirm staining specificity. The optimal working concentration for this antibody was determined to be 10 µg/mL. Western Blot: 1:500. Single band in sheep and rat brain. Positive control: Rat brain tissue, rat brain cytosolic fraction, human brain lysate.
Comment:	Target Species of Antibody: Sheep
Restrictions:	For Research Use only

Handling

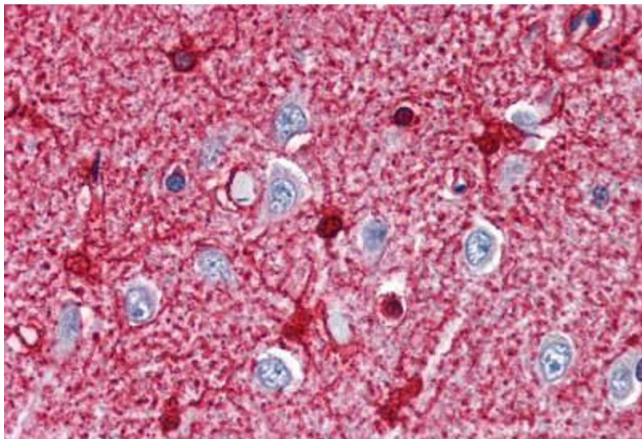
Format:	Liquid
Concentration:	Lot specific
Buffer:	PBS, pH 7.5, 0.09 % sodium azide, BSA, 50 % glycerol.
Preservative:	Sodium azide
Precaution of Use:	This product contains Sodium azide: a POISONOUS AND HAZARDOUS SUBSTANCE which should be handled by trained staff only.
Handling Advice:	Avoid repeat freeze-thaw cycles.

Handling

Storage: 4 °C, -20 °C

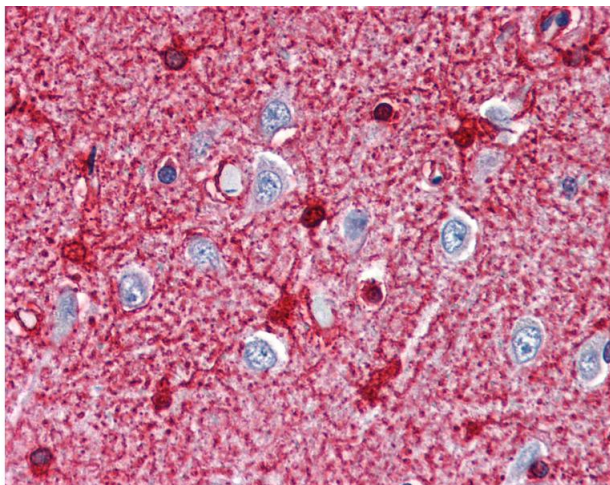
Storage Comment: Short term: 4°C. Long term: Store at -20°C. Avoid freeze-thaw cycles.

Images



Immunohistochemistry (Paraffin-embedded Sections)

Image 1. Human Brain, Cortex (formalin-fixed, paraffin-embedded) stained with GLUL antibody ABIN337301 at 10 ug/ml followed by biotinylated anti-mouse IgG secondary antibody ABIN481714, alkaline phosphatase-streptavidin and chromogen.



Immunohistochemistry

Image 2. Anti-GLUL / Glutamine Synthetase antibody IHC of human brain, cortex. Immunohistochemistry of formalin-fixed, paraffin-embedded tissue after heat-induced antigen retrieval. Antibody concentration 10 ug/ml.