



[Go to Product page](#)

Datasheet for ABIN337317

anti-CD40 antibody

2 Images

Overview

Quantity:	50 µg
Target:	CD40
Reactivity:	Human, Dog
Host:	Mouse
Clonality:	Monoclonal
Conjugate:	This CD40 antibody is un-conjugated
Application:	Flow Cytometry (FACS), Immunohistochemistry (IHC), Immunoprecipitation (IP), Immunohistochemistry (Paraffin-embedded Sections) (IHC (p)), Immunohistochemistry (Frozen Sections) (IHC (fro))

Product Details

Brand:	IHC-plus™
Immunogen:	Type of Immunogen: Native protein
Clone:	LOB7-6
Isotype:	IgG2a
Specificity:	Recognizes the human CD40 cell surface antigen, a 48kD glycoprotein expressed by B lymphocytes and weakly by some monocytes. CD40 is involved in the process of B cell selection in germinal centers and is vital in T cell-B cell interactions.
Purification:	Protein A purified

Target Details

Target:	CD40
Alternative Name:	CD40 (CD40 Products)
Background:	Name/Gene ID: CD40 Family: TNF Receptor Synonyms: CD40, B-cell surface antigen CD40, B cell-associated molecule, B cell surface antigen CD40, CD40 antigen, CD40 type II isoform, p50, Bp50, CD40L receptor, CDW40, TNFRSF5
Gene ID:	958
UniProt:	P25942
Pathways:	NF-kappaB Signaling , Cellular Response to Molecule of Bacterial Origin , M Phase , Regulation of Leukocyte Mediated Immunity , Positive Regulation of Immune Effector Process , Production of Molecular Mediator of Immune Response , Cancer Immune Checkpoints

Application Details

Application Notes:	Approved: Flo (20 µg/mL), IHC, IHC-Fr (1 - 10 µg/mL), IHC-P (10 µg/mL), IP Usage: Immunohistochemistry: This antibody was validated for use in immunohistochemistry on a panel of 21 formalin-fixed, paraffin-embedded (FFPE) human tissues after heat induced antigen retrieval in pH 6.0 citrate buffer. After incubation with the primary antibody, slides were incubated with biotinylated secondary antibody, followed by alkaline phosphatase-streptavidin and chromogen. The stained slides were evaluated by a pathologist to confirm staining specificity. The optimal working concentration for this antibody was determined to be 10 µg/mL. Flow Cytometry: Use 10 µL of the suggested working dilution to label 10 ⁶ cells in 100 µL. Immunohistochemistry: This product requires protein digestion pre-treatment of paraffin embedded sections prior to staining e. g. pronase or trypsin. Histology Positive Control Tissue: Human Tonsil.
Comment:	Target Species of Antibody: Human
Restrictions:	For Research Use only

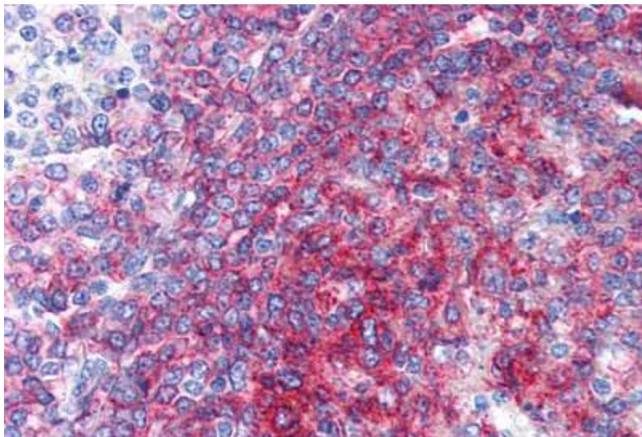
Handling

Format:	Liquid
---------	--------

Handling

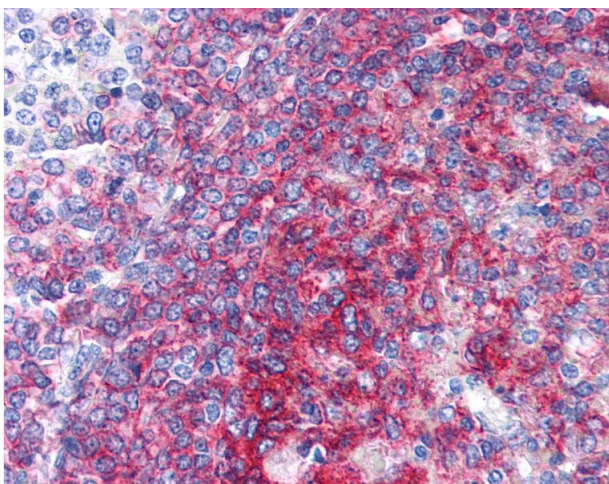
Concentration:	Lot specific
Buffer:	Tris buffered saline, 0.09 % sodium azide.
Preservative:	Sodium azide
Precaution of Use:	This product contains Sodium azide: a POISONOUS AND HAZARDOUS SUBSTANCE which should be handled by trained staff only.
Handling Advice:	Avoid repeated freezing and thawing. Store undiluted.
Storage:	4 °C,-20 °C
Storage Comment:	4°C or -20°C, Avoid freeze-thaw cycles. Store undiluted.

Images



Immunohistochemistry (Paraffin-embedded Sections)

Image 1. Human Spleen (formalin-fixed, paraffin-embedded) stained with CD40 antibody ABIN337317 at 10 ug/ml followed by biotinylated anti-mouse IgG secondary antibody ABIN481714, alkaline phosphatase-streptavidin and chromogen.



Immunohistochemistry

Image 2. Anti-CD40 antibody IHC of human spleen. Immunohistochemistry of formalin-fixed, paraffin-embedded tissue after heat-induced antigen retrieval. Antibody concentration 10 ug/ml.