

Datasheet for ABIN337339 anti-LMO4 antibody (AA 115-127)



[Go to Product page](#)

2 Images

Overview

Quantity:	50 µg
Target:	LMO4
Binding Specificity:	AA 115-127
Reactivity:	Human, Rodents
Host:	Rabbit
Clonality:	Polyclonal
Conjugate:	This LMO4 antibody is un-conjugated
Application:	ELISA, Western Blotting (WB), Immunohistochemistry (IHC), Immunohistochemistry (Paraffin-embedded Sections) (IHC (p)), Immunohistochemistry (Frozen Sections) (IHC (fro))

Product Details

Brand:	IHC-plus™
Immunogen:	Synthetic peptide corresponding to aa115-127 of human LMO4. Type of Immunogen: Synthetic peptide
Isotype:	IgG
Specificity:	Recognizes LMO4. Species cross-reactivity: Human and rodent.
Purification:	Affinity purified

Target Details

Target:	LMO4
---------	------

Target Details

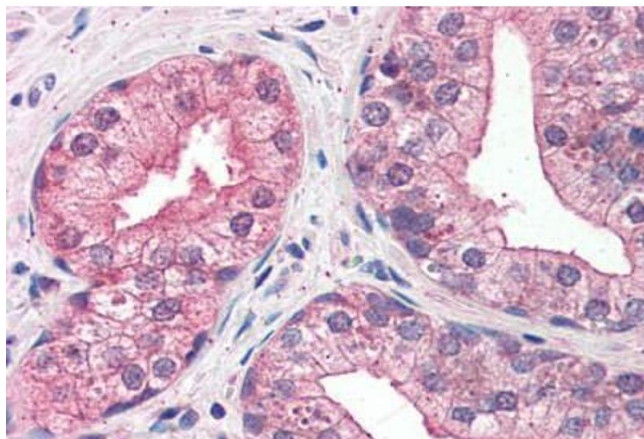
Alternative Name:	LM04 (LM04 Products)
Background:	Name/Gene ID: LM04 Synonyms: LM04, Breast tumor autoantigen, LIM domain only 4, LIM domain only protein 4, LM0-4
Gene ID:	8543
UniProt:	P61968
Pathways:	Tube Formation

Application Details

Application Notes:	Approved: ELISA, IHC, IHC-Fr (1:200 - 1:1000), IHC-P (5 µg/mL), WB (1:200 - 1:1000) Usage: Immunohistochemistry: This antibody was validated for use in immunohistochemistry on a panel of 21 formalin-fixed, paraffin-embedded (FFPE) human tissues after heat induced antigen retrieval in pH 6.0 citrate buffer. After incubation with the primary antibody, slides were incubated with biotinylated secondary antibody, followed by alkaline phosphatase-streptavidin and chromogen. The stained slides were evaluated by a pathologist to confirm staining specificity. The optimal working concentration for this antibody was determined to be 5 µg/mL.
Comment:	Target Species of Antibody: Human
Restrictions:	For Research Use only

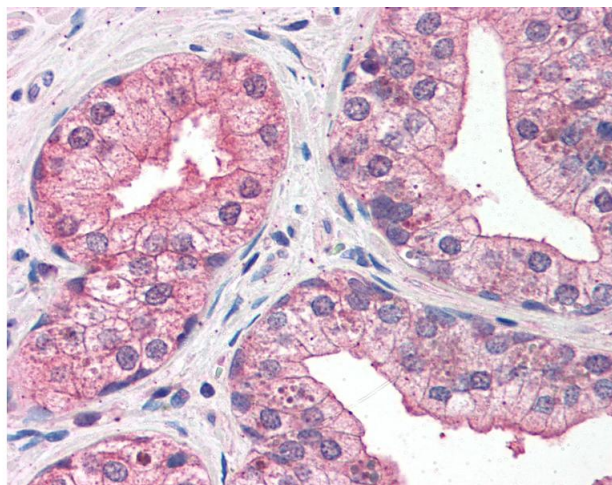
Handling

Format:	Liquid
Concentration:	Lot specific
Buffer:	PBS, pH 7.2. No preservative added.
Preservative:	Without preservative
Handling Advice:	Avoid repeated freezing and thawing.
Storage:	4 °C, -20 °C
Storage Comment:	4°C or -20°C, Avoid freeze-thaw cycles.



Immunohistochemistry (Formalin-fixed Paraffin-embedded Sections)

Image 1. Prostate: Formalin-Fixed, Paraffin-Embedded (FFPE)



Immunohistochemistry

Image 2. Anti-LM04 antibody IHC of human prostate. Immunohistochemistry of formalin-fixed, paraffin-embedded tissue after heat-induced antigen retrieval. Antibody concentration 5 ug/ml.