

Datasheet for ABIN337346  
**anti-RAPSN antibody (AA 399-412)**[Go to Product page](#)

## 2 Images

## Overview

Quantity:	50 µg
Target:	RAPSN
Binding Specificity:	AA 399-412
Reactivity:	Human, Mouse, Rat
Host:	Rabbit
Clonality:	Polyclonal
Conjugate:	This RAPSN antibody is un-conjugated
Application:	Western Blotting (WB), Immunohistochemistry (IHC), ELISA, Immunohistochemistry (Paraffin-embedded Sections) (IHC (p))

## Product Details

Brand:	IHC-plus™
Immunogen:	Synthetic peptide from human RAPSN / RAPSIN.  Type of Immunogen: Synthetic peptide
Specificity:	Synthetic peptide corresponding to C-terminal residues of human RAPSN(43 kD receptor-associated protein of the synapse).
Purification:	Immunoaffinity purified

## Target Details

Target:	RAPSN
---------	-------

## Target Details

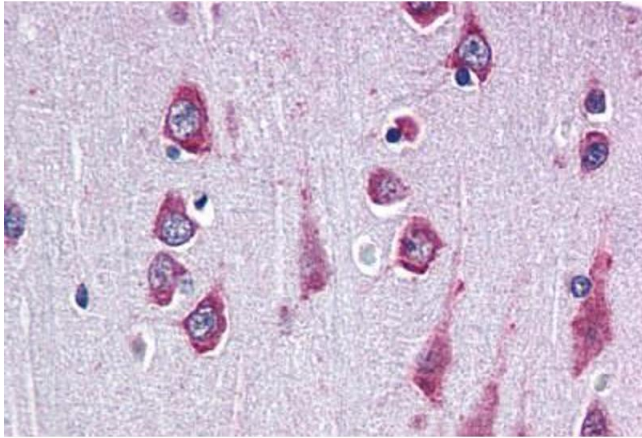
Alternative Name:	RAPSYN ( <a href="#">RAPSN Products</a> )
Background:	Name/Gene ID: RAPSN  Synonyms: RAPSN, 43 kDa postsynaptic protein, CMS1D, CMS1E, RING finger protein 205, RAPSYN, RNF205, 43 kDa receptor-associated protein of the synapse, acetylcholine receptor-associated 43 kda protein
Gene ID:	5913

## Application Details

Application Notes:	Approved: ELISA, IHC, IHC-P (10 - 20 µg/mL), WB (1 µg/mL)  Usage: Immunohistochemistry: This antibody was validated for use in immunohistochemistry on a panel of 21 formalin-fixed, paraffin-embedded (FFPE) human tissues after heat induced antigen retrieval in pH 6.0 citrate buffer. After incubation with the primary antibody, slides were incubated with biotinylated secondary antibody, followed by alkaline phosphatase-streptavidin and chromogen. The stained slides were evaluated by a pathologist to confirm staining specificity. The optimal working concentration for this antibody was determined to be 10-20 µg/mL.
Comment:	Target Species of Antibody: Human
Restrictions:	For Research Use only

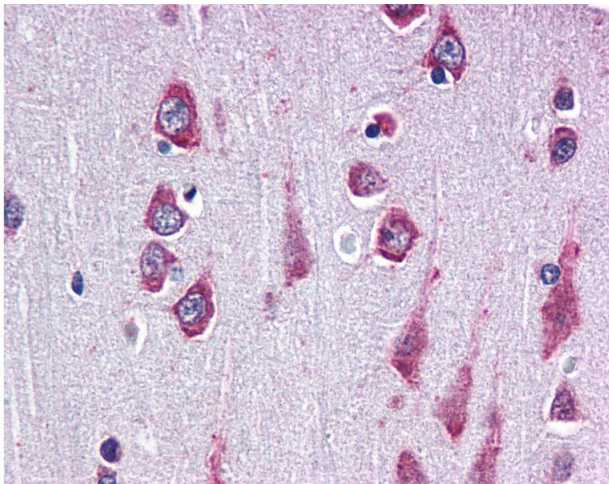
## Handling

Format:	Liquid
Concentration:	Lot specific
Buffer:	PBS, 0.01 % sodium azide, 50 % glycerol.
Preservative:	Sodium azide
Precaution of Use:	This product contains Sodium azide: a POISONOUS AND HAZARDOUS SUBSTANCE which should be handled by trained staff only.
Storage:	4 °C, -20 °C
Storage Comment:	4°C or -20°C, Avoid freeze-thaw cycles.



#### Immunohistochemistry (Paraffin-embedded Sections)

**Image 1.** Human Brain, Cortex (formalin-fixed, paraffin-embedded) stained with RAPSN antibody ABIN337346 at 10-20 ug/ml followed by biotinylated goat anti-rabbit IgG secondary antibody ABIN481713, alkaline phosphatase-streptavidin and chromogen.



#### Immunohistochemistry

**Image 2.** Anti-RAPSN / RAPSIN antibody IHC of human brain, cortex. Immunohistochemistry of formalin-fixed, paraffin-embedded tissue after heat-induced antigen retrieval. Antibody concentration 20 ug/ml.