

Datasheet for ABIN337350
anti-DISC1 antibody (C-Term)



[Go to Product page](#)

2 Images

Overview

Quantity:	50 µg
Target:	DISC1
Binding Specificity:	C-Term
Reactivity:	Human
Host:	Rabbit
Clonality:	Polyclonal
Conjugate:	This DISC1 antibody is un-conjugated
Application:	Western Blotting (WB), Immunohistochemistry (IHC), ELISA, Immunohistochemistry (Paraffin-embedded Sections) (IHC (p))

Product Details

Brand:	IHC-plus™
Immunogen:	Synthetic peptide from human DISC1. Type of Immunogen: Synthetic peptide
Specificity:	Synthetic peptide corresponding to C-terminal residues of human DISC1 (Disrupted in schizophrenia 1 protein)
Purification:	Immunoaffinity purified

Target Details

Target:	DISC1
---------	-------

Target Details

Alternative Name:	DISC1 (DISC1 Products)
Background:	Name/Gene ID: DISC1 Synonyms: DISC1, C1orf136, Disrupted in schizophrenia 1, KIAA0457, SCZD9
Gene ID:	27185
UniProt:	Q9NRI5
Pathways:	Regulation of Cell Size

Application Details

Application Notes:	Approved: ELISA, IHC, IHC-P (10 - 20 µg/mL), WB (1 µg/mL) Usage: Immunohistochemistry: This antibody was validated for use in immunohistochemistry on a panel of 21 formalin-fixed, paraffin-embedded (FFPE) human tissues after heat induced antigen retrieval in pH 6.0 citrate buffer. After incubation with the primary antibody, slides were incubated with biotinylated secondary antibody, followed by alkaline phosphatase-streptavidin and chromogen. The stained slides were evaluated by a pathologist to confirm staining specificity. The optimal working concentration for this antibody was determined to be 10-20 µg/mL.
Comment:	Target Species of Antibody: Human
Restrictions:	For Research Use only

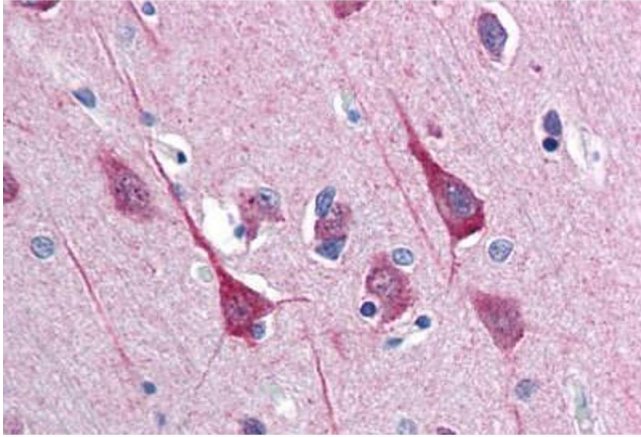
Handling

Format:	Liquid
Concentration:	Lot specific
Buffer:	PBS, 0.01 % sodium azide, 50 % glycerol.
Preservative:	Sodium azide
Precaution of Use:	This product contains Sodium azide: a POISONOUS AND HAZARDOUS SUBSTANCE which should be handled by trained staff only.
Handling Advice:	Avoid repeated freezing and thawing.
Storage:	4 °C, -20 °C

Handling

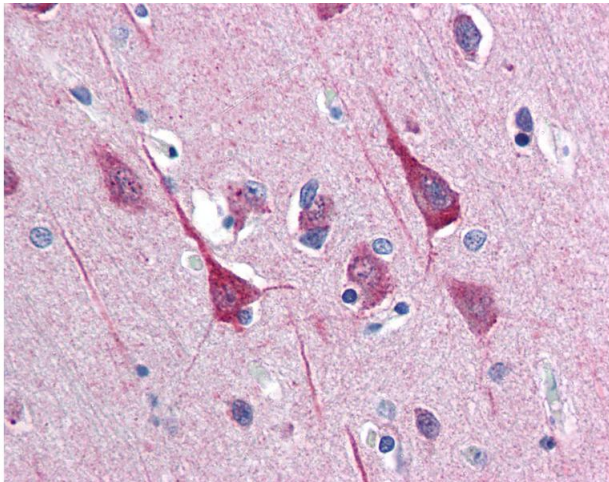
Storage Comment: 4°C or -20°C, Avoid freeze-thaw cycles.

Images



Immunohistochemistry (Paraffin-embedded Sections)

Image 1. Human Brain, Cortex (formalin-fixed, paraffin-embedded) stained with DISC1 antibody ABIN337350 at 10-20 ug/ml followed by biotinylated goat anti-rabbit IgG secondary antibody ABIN481713, alkaline phosphatase-streptavidin and chromogen.



Immunohistochemistry

Image 2. Anti-DISC1 antibody IHC of human brain, cortex. Immunohistochemistry of formalin-fixed, paraffin-embedded tissue after heat-induced antigen retrieval. Antibody concentration 20 ug/ml.