

Datasheet for ABIN337358
anti-Complement C2 antibody

2 Images

[Go to Product page](#)

Overview

Quantity:	50 µL
Target:	Complement C2
Reactivity:	Human
Host:	Mouse
Clonality:	Monoclonal
Conjugate:	This Complement C2 antibody is un-conjugated
Application:	Western Blotting (WB), ELISA, Immunohistochemistry (IHC), Immunohistochemistry (Paraffin-embedded Sections) (IHC (p))

Product Details

Brand:	IHC-plus™
Immunogen:	Complement component C2 isolated from human plasma. Type of Immunogen: Purified protein
Isotype:	IgG1 kappa
Specificity:	Recognizes C2 from human plasma/serum. Epitope specificity differs from that of LS-C22277 and LS-C22278 as determined by inhibition ELISA. Reacts strongly with C2. Strong reaction is seen with human serum/plasma and no reaction is seen with serum from patients deficient in C2, when tested in sandwich ELISA with a polyclonal antibody against C2. In ELISA, reaction is also seen with C2 directly coated onto the microtiter well.
Purification:	Protein A/G purified

Target Details

Target:	Complement C2
Abstract:	Complement C2 Products
Background:	Name/Gene ID: C2 Subfamily: Serine S1 Family: Protease Synonyms: C2, C2b, C3/C5 convertase, Complement component C2, Complement C2, Complement component 2, C02
Gene ID:	717
UniProt:	P06681

Application Details

Application Notes:	Approved: ELISA (1:2000), IHC, IHC-P (10 µg/mL), WB (1:125) Usage: Immunohistochemistry: This antibody was validated for use in immunohistochemistry on a panel of 21 formalin-fixed, paraffin-embedded (FFPE) human tissues after heat induced antigen retrieval in pH 6.0 citrate buffer. After incubation with the primary antibody, slides were incubated with biotinylated secondary antibody, followed by alkaline phosphatase-streptavidin and chromogen. The stained slides were evaluated by a pathologist to confirm staining specificity. The optimal working concentration for this antibody was determined to be 10 µg/mL. Western Blot: After SDS-PAGE, this antibody reacts with C2 and a subfraction of C2 believed to be C2b, both under reducing and non-reducing conditions.
Comment:	Target Species of Antibody: Human
Restrictions:	For Research Use only

Handling

Format:	Liquid
Concentration:	Lot specific
Buffer:	PBS, pH 7.4, 15 mM sodium azide
Preservative:	Sodium azide
Precaution of Use:	This product contains Sodium azide: a POISONOUS AND HAZARDOUS SUBSTANCE which

Handling

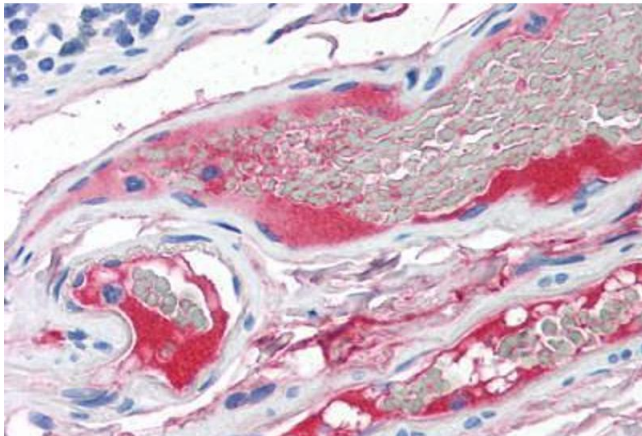
should be handled by trained staff only.

Handling Advice: Avoid repeated freezing and thawing.

Storage: 4 °C, -20 °C

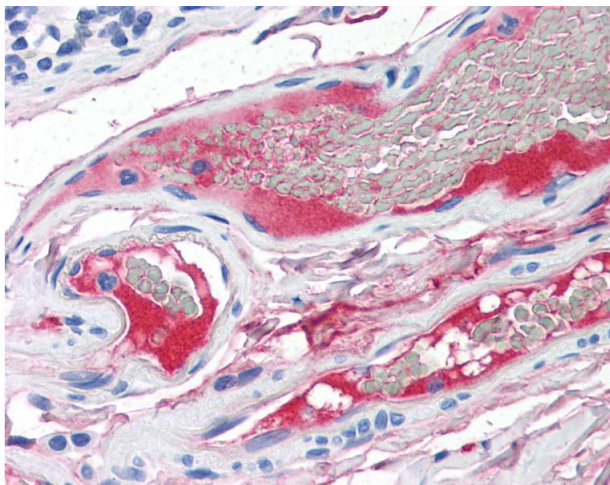
Storage Comment: 4°C or -20°C, Avoid freeze-thaw cycles.

Images



Immunohistochemistry (Paraffin-embedded Sections)

Image 1. Human Small Intestine, Vessels (formalin-fixed, paraffin-embedded) stained with C2 antibody ABIN337358 at 10 ug/ml followed by biotinylated anti-mouse IgG secondary antibody ABIN481714, alkaline phosphatase-streptavidin and chromogen.



Immunohistochemistry

Image 2. Anti-C2 / Complement C2 antibody IHC of human small intestine, vessels. Immunohistochemistry of formalin-fixed, paraffin-embedded tissue after heat-induced antigen retrieval. Antibody concentration 10 ug/ml.