

Datasheet for ABIN337370
anti-PAR1 antibody (N-Term)

2 Images

[Go to Product page](#)

Overview

Quantity:	50 µg
Target:	PAR1 (F2R)
Binding Specificity:	N-Term
Reactivity:	Human
Host:	Mouse
Clonality:	Monoclonal
Conjugate:	This PAR1 antibody is un-conjugated
Application:	ELISA, Immunohistochemistry (IHC), Immunohistochemistry (Paraffin-embedded Sections) (IHC (p)), Flow Cytometry (FACS), Immunofluorescence (IF)

Product Details

Brand:	IHC-plus™
Immunogen:	A synthetic peptide corresponding to the N-terminal region of the human thrombin receptor PAR1. Type of Immunogen: Synthetic peptide
Clone:	ATAP2
Isotype:	IgG1
Specificity:	Recognizes the cleaved and intact forms of human thrombin receptor PAR1, N-terminus. Does not cross-react with PAR2.
Purification:	Protein A purified

Target Details

Target:	PAR1 (F2R)
Alternative Name:	F2R / Thrombin Receptor / PAR1 (F2R Products)
Background:	Name/Gene ID: F2R Subfamily: Proteinase-activated Family: GPCR Synonyms: F2R, CF2R, Coagulation factor II receptor, PAR1, PAR-1, Thrombin receptor, TR, HTR, Protease-activated receptor 1
Gene ID:	2149
UniProt:	P25116
Pathways:	Nuclear Receptor Transcription Pathway , Skeletal Muscle Fiber Development , Positive Regulation of Endopeptidase Activity , Protein targeting to Nucleus

Application Details

Application Notes:	Approved: ELISA (0.1 - 1 µg/mL), Flo (10 - 20 µg/mL), IF (1 - 3 µg/mL), IHC, IHC-P (10 µg/mL) Usage: Immunohistochemistry: This antibody was validated for use in immunohistochemistry on a panel of 21 formalin-fixed, paraffin-embedded (FFPE) human tissues after heat induced antigen retrieval in pH 6.0 citrate buffer. After incubation with the primary antibody, slides were incubated with biotinylated secondary antibody, followed by alkaline phosphatase-streptavidin and chromogen. The stained slides were evaluated by a pathologist to confirm staining specificity. The optimal working concentration for this antibody was determined to be 10 µg/mL. Immunofluorescence (Methanol or acetone fixed CHRF cells): 1-3 µg/mL. Flow Cytometry (Methanol or acetone fixed CHRF cells): 10-20 µg/mL. ELISA: 0.1-1.0 µg/mL. Not recommended for: WB
Comment:	Target Species of Antibody: Human
Restrictions:	For Research Use only

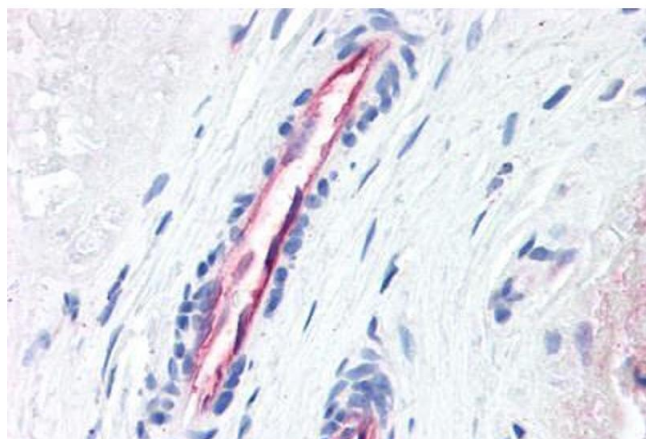
Handling

Format:	Liquid
Concentration:	Lot specific

Handling

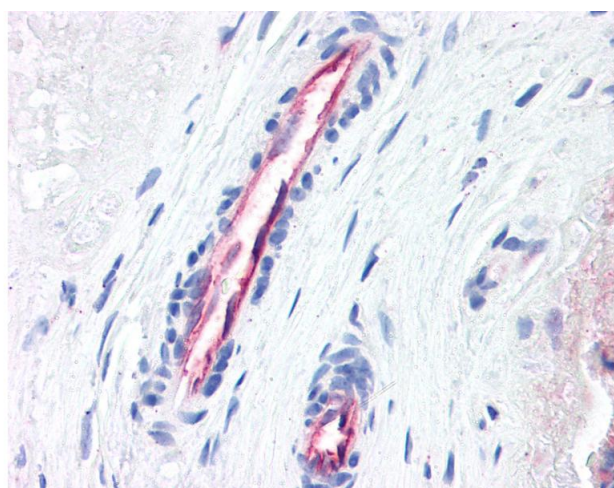
Buffer:	PBS, pH 7.4, 0.1 % sodium azide
Preservative:	Sodium azide
Precaution of Use:	This product contains Sodium azide: a POISONOUS AND HAZARDOUS SUBSTANCE which should be handled by trained staff only.
Handling Advice:	Avoid repeated freezing and thawing.
Storage:	4 °C, -20 °C
Storage Comment:	Short term: 4°C. Long term: Store at -20°C. Avoid freeze-thaw cycles.

Images



Immunohistochemistry (Paraffin-embedded Sections)

Image 1. Human Placenta, Vessels (formalin-fixed, paraffin-embedded) stained with F2R antibody ABIN337370 at 10 ug/ml followed by biotinylated anti-mouse IgG secondary antibody ABIN481714, alkaline phosphatase-streptavidin and chromogen.



Immunohistochemistry

Image 2. Anti-Thrombin Receptor antibody IHC of human placenta, vessels. Immunohistochemistry of formalin-fixed, paraffin-embedded tissue after heat-induced antigen retrieval. Antibody concentration 10 ug/ml.