

Datasheet for ABIN337372

anti-C5AR1 antibody**2** Images[Go to Product page](#)

Overview

Quantity:	50 µg
Target:	C5AR1
Reactivity:	Human, Rabbit
Host:	Mouse
Clonality:	Monoclonal
Conjugate:	This C5AR1 antibody is un-conjugated
Application:	Flow Cytometry (FACS), Immunohistochemistry (IHC), Immunohistochemistry (Paraffin-embedded Sections) (IHC (p)), Functional Studies (Func), Neutralization (Neut)

Product Details

Brand:	IHC-plus™
Immunogen:	C5aR - peptide: Met1 - Asn31. Type of Immunogen: Synthetic peptide
Isotype:	IgG2a
Specificity:	Recognizes the C5a receptor (C5aR) CD88, which is predominantly expressed on cells of the myeloid lineage. Clone 3H1738 was raised against a synthetic peptide Met1 -Asn31 and has recently been shown to recognize the heptameric peptide (D15DKDTLD21). Clone 3H1738 inhibits C5a binding to its receptor. Species cross-reactivity: Rabbit.
Purification:	Ion exchange chromatography

Target Details

Target:	C5AR1
Alternative Name:	C5AR1 / CD88 / C5a Receptor (C5AR1 Products)
Background:	Name/Gene ID: C5AR1 Subfamily: Anaphylatoxin Family: GPCR Synonyms: C5AR1, C5A, C5a-R, C5a ligand, C5a receptor, CD88, C5a anaphylatoxin receptor, C5AR, C5R1, CD88 antigen
Gene ID:	728
UniProt:	P21730
Pathways:	Complement System

Application Details

Application Notes:	Approved: Flo (1:50), Func, IHC, IHC-P (10 µg/mL), Neut Usage: Immunohistochemistry: This antibody was validated for use in immunohistochemistry on a panel of 21 formalin-fixed, paraffin-embedded (FFPE) human tissues after heat induced antigen retrieval in pH 6.0 citrate buffer. After incubation with the primary antibody, slides were incubated with biotinylated secondary antibody, followed by alkaline phosphatase-streptavidin and chromogen. The stained slides were evaluated by a pathologist to confirm staining specificity. The optimal working concentration for this antibody was determined to be 10 µg/mL. Flow Cytometry: 1:50. Use 20 µL to label 5x10 ⁵ cells in 100 µL. The applications listed have been tested for the unmodified form of this product. Other forms have not been tested.
Comment:	Target Species of Antibody: Human
Restrictions:	For Research Use only

Handling

Format:	Liquid
Concentration:	Lot specific
Buffer:	PBS, pH 7.4, 40 % glycerol. No preservative added.
Preservative:	Azide free

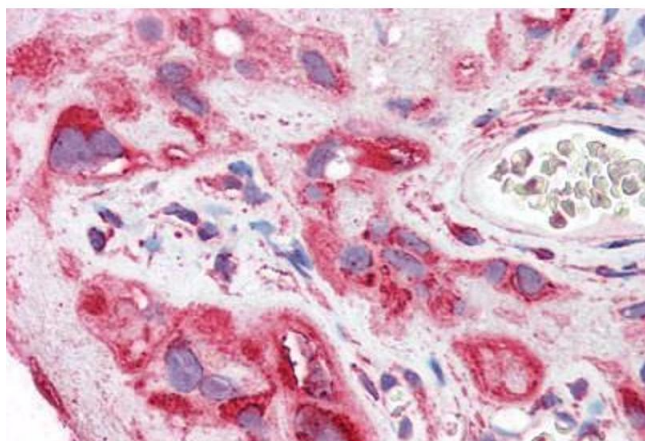
Handling

Handling Advice: Avoid repeated freezing and thawing.

Storage: 4 °C, -20 °C

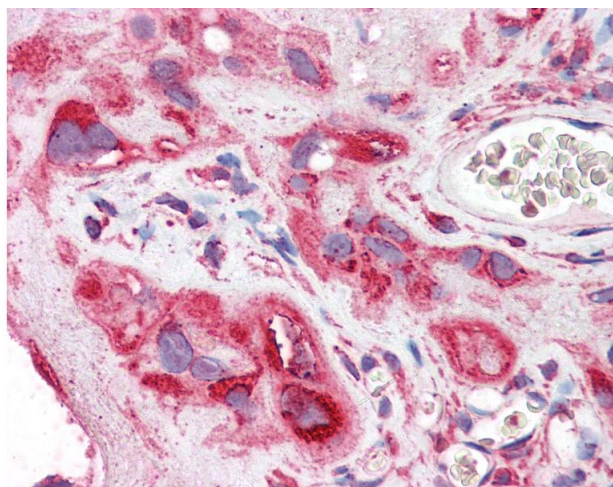
Storage Comment: Short term: 4°C. Long term: Store at -20°C. Avoid freeze-thaw cycles.

Images



Immunohistochemistry (Paraffin-embedded Sections)

Image 1. Human Placenta (formalin-fixed, paraffin-embedded) stained with C5AR1 antibody ABIN337372 at 10 ug/ml followed by biotinylated anti-mouse IgG secondary antibody ABIN481714, alkaline phosphatase-streptavidin and chromogen.



Immunohistochemistry

Image 2. Anti-C5AR1 / CD88 antibody IHC of human placenta. Immunohistochemistry of formalin-fixed, paraffin-embedded tissue after heat-induced antigen retrieval. Antibody concentration 10 ug/ml. This image was taken for the unmodified form of this product. Ot ...