

Datasheet for ABIN337388

anti-LY75/DEC-205 antibody (C-Term)[Go to Product page](#)**2** Images

Overview

Quantity:	50 µL
Target:	LY75/DEC-205 (LY75)
Binding Specificity:	C-Term
Reactivity:	Human
Host:	Rabbit
Clonality:	Polyclonal
Conjugate:	This LY75/DEC-205 antibody is un-conjugated
Application:	Immunohistochemistry (IHC), Immunohistochemistry (Paraffin-embedded Sections) (IHC (p))

Product Details

Brand:	IHC-plus™
Immunogen:	Peptide derived from C-terminal sequence of human CD205.
Purification:	Purified

Target Details

Target:	LY75/DEC-205 (LY75)
Alternative Name:	DEC-205 / CD205 / LY75 (LY75 Products)
Background:	Name/Gene ID: LY75 Synonyms: LY75, CD205, CLEC13B, CD205 antigen, LY-75, Lymphocyte antigen 75, DEC-205, gp200-MR6

Target Details

Gene ID: 4065

UniProt: [O60449](#)

Application Details

Application Notes: Approved: IHC, IHC-P (10 µg/mL)

Usage: Immunohistochemistry: This antibody was validated for use in immunohistochemistry on a panel of 21 formalin-fixed, paraffin-embedded (FFPE) human tissues after heat induced antigen retrieval in pH 6.0 citrate buffer. After incubation with the primary antibody, slides were incubated with biotinylated secondary antibody, followed by alkaline phosphatase-streptavidin and chromogen. The stained slides were evaluated by a pathologist to confirm staining specificity. The optimal working concentration for this antibody was determined to be 10 µg/mL.

Comment: Target Species of Antibody: Human

Restrictions: For Research Use only

Handling

Format: Liquid

Concentration: Lot specific

Buffer: 20 mM Tris-HCl, pH 8.0, 20 mg/mL BSA, 0.05 % sodium azide

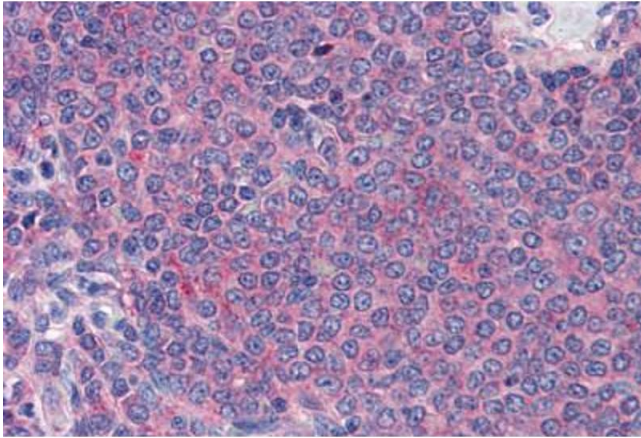
Preservative: Sodium azide

Precaution of Use: This product contains Sodium azide: a POISONOUS AND HAZARDOUS SUBSTANCE which should be handled by trained staff only.

Handling Advice: Aliquot to Avoid freeze/thaw cycles.

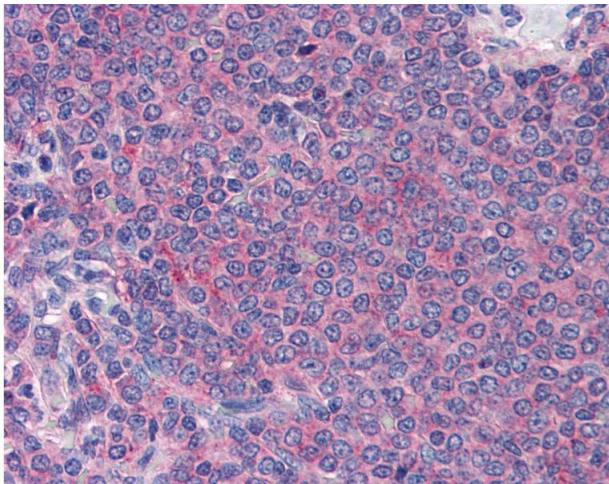
Storage: -20 °C

Storage Comment: Store at -20°C. Aliquot to avoid freeze/thaw cycles.



Immunohistochemistry (Paraffin-embedded Sections)

Image 1. Human Spleen (formalin-fixed, paraffin-embedded) stained with LY75 antibody ABIN337388 at 10 ug/ml followed by biotinylated goat anti-rabbit IgG secondary antibody ABIN481713, alkaline phosphatase-streptavidin and chromogen.



Immunohistochemistry

Image 2. Anti-LY75 / DEC-205 antibody IHC of human spleen. Immunohistochemistry of formalin-fixed, paraffin-embedded tissue after heat-induced antigen retrieval. Antibody concentration 10 ug/ml.