



[Go to Product page](#)

Datasheet for ABIN337392

anti-LRP1 antibody

2 Images

Overview

Quantity:	50 µg
Target:	LRP1
Reactivity:	Human, Mouse, Rabbit
Host:	Mouse
Clonality:	Monoclonal
Conjugate:	This LRP1 antibody is un-conjugated
Application:	Western Blotting (WB), Immunohistochemistry (IHC), Flow Cytometry (FACS), Immunohistochemistry (Paraffin-embedded Sections) (IHC (p))

Product Details

Brand:	IHC-plus™
Immunogen:	Full length native protein (purified) (Human). Type of Immunogen: Native protein
Clone:	5A6
Isotype:	IgG2b
Specificity:	Recognises the 85 kDa cleaved fragment of Low Density LRP (extracellular domain).
Purification:	Protein A purified

Target Details

Target:	LRP1
---------	------

Target Details

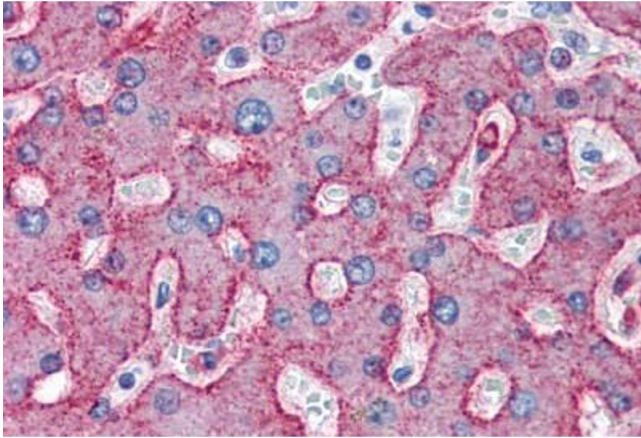
Alternative Name:	LRP1 / CD91 (LRP1 Products)
Background:	Name/Gene ID: LRP1 Synonyms: LRP1, Apolipoprotein E receptor, CD91 antigen, CD91, A2MR, IGFBP3R, Alpha-2-macroglobulin receptor, TGFBR5, Type V tgf-beta receptor, APOER, APR, LRP, LRP-1
Gene ID:	4035
UniProt:	Q07954
Pathways:	Smooth Muscle Cell Migration , Platelet-derived growth Factor Receptor Signaling

Application Details

Application Notes:	Approved: Flo, IHC, IHC-P (10 µg/mL), WB Usage: Immunohistochemistry: This antibody was validated for use in immunohistochemistry on a panel of 21 formalin-fixed, paraffin-embedded (FFPE) human tissues after heat induced antigen retrieval in pH 6.0 citrate buffer. After incubation with the primary antibody, slides were incubated with biotinylated secondary antibody, followed by alkaline phosphatase-streptavidin and chromogen. The stained slides were evaluated by a pathologist to confirm staining specificity. The optimal working concentration for this antibody was determined to be 10 µg/mL.
Comment:	Target Species of Antibody: Human
Restrictions:	For Research Use only

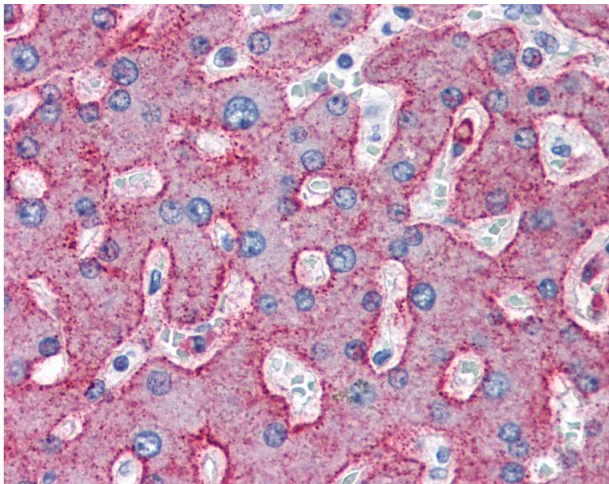
Handling

Format:	Liquid
Concentration:	Lot specific
Buffer:	0.05 M sodium phosphate, 0.1 M sodium chloride, 1 mM EDTA, pH 6.6.
Handling Advice:	Avoid repeated freezing and thawing.
Storage:	4 °C, -20 °C
Storage Comment:	4°C or -20°C, Avoid freeze-thaw cycles.



Immunohistochemistry (Paraffin-embedded Sections)

Image 1. Human Liver (formalin-fixed, paraffin-embedded) stained with LRP1 antibody ABIN337392 at 10 ug/ml followed by biotinylated anti-mouse IgG secondary antibody ABIN481714, alkaline phosphatase-streptavidin and chromogen.



Immunohistochemistry

Image 2. Anti-LRP1 / Low Density LRP antibody IHC of human liver. Immunohistochemistry of formalin-fixed, paraffin-embedded tissue after heat-induced antigen retrieval. Antibody concentration 10 ug/ml.