

Datasheet for ABIN337394
anti-COPB2 antibody (AA 494-511)



[Go to Product page](#)

3 Images

Overview

Quantity:	50 µg
Target:	COPB2
Binding Specificity:	AA 494-511
Reactivity:	Human, Mouse, Rat, Bat, Cow, Dog, Horse, Monkey, Pig
Host:	Rabbit
Clonality:	Polyclonal
Conjugate:	This COPB2 antibody is un-conjugated
Application:	Western Blotting (WB), Immunohistochemistry (IHC), Immunohistochemistry (Paraffin-embedded Sections) (IHC (p))

Product Details

Brand:	IHC-plus™
Immunogen:	Synthetic peptide: KVLAAQETHEGVTEDEGIE, corresponding to amino acids 494-511 of Rat beta COP I. Percent identity by BLAST analysis: Human, Gorilla, Gibbon, Monkey, Marmoset, Mouse, Rat, Elephant, Panda, Dog, Bat, Bovine, Horse, Pig, Opossum, Platypus (100%), Orangutan, Rabbit, Lizard (94%), Chicken (89%), Turkey, Xenopus, Sea anemone (83%). Type of Immunogen: Synthetic peptide
Isotype:	IgG
Specificity:	Detects rat coatmer-protein I beta (COP I beta).
Predicted Reactivity:	Percent identity by BLAST analysis: Human, Gorilla, Gibbon, Monkey, Marmoset, Mouse, Rat,

Product Details

Elephant, Panda, Dog, Bat, Bovine, Horse, Pig, Opossum, Platypus (100%) Orangutan, Rabbit, Lizard (94%) Chicken (89%) Turkey, Xenopus, Sea anemone (83%).

Purification: Immunoaffinity purified

Target Details

Target: COPB2

Alternative Name: Beta-COP / COPB2 ([COPB2 Products](#))

Background: Name/Gene ID: COPB2

Synonyms: COPB2, Betaprime-COP, Beta'-COP, Beta-coat protein, Beta-COP, p102, Coatomer beta' subunit, Coatomer subunit beta

Gene ID: 9276

UniProt: [P35606](#)

Application Details

Application Notes: Approved: IHC, IHC-P (5 µg/mL), WB (2 µg/mL)

Usage: Immunohistochemistry: This antibody was validated for use in immunohistochemistry on a panel of 21 formalin-fixed, paraffin-embedded (FFPE) human tissues after heat induced antigen retrieval in pH 6.0 citrate buffer. After incubation with the primary antibody, slides were incubated with biotinylated secondary antibody, followed by alkaline phosphatase-streptavidin and chromogen. The stained slides were evaluated by a pathologist to confirm staining specificity. The optimal working concentration for this antibody was determined to be 5 µg/mL. Western Blot: 2 µg/mL, Detects an ~115kD protein representing COP I beta from PC-12 cell extract.

Comment: Target Species of Antibody: Rat

Restrictions: For Research Use only

Handling

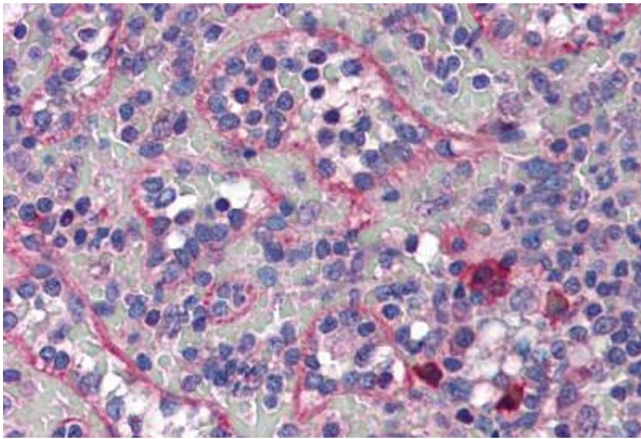
Format: Liquid

Concentration: Lot specific

Handling

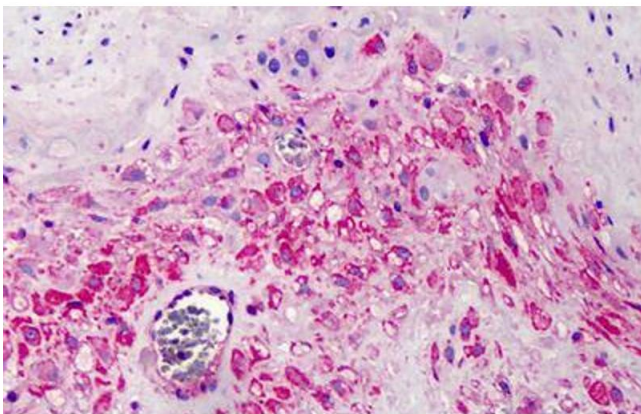
Buffer:	PBS, 1 mg/mL BSA, 0.05 % sodium azide.
Preservative:	Sodium azide
Precaution of Use:	This product contains Sodium azide: a POISONOUS AND HAZARDOUS SUBSTANCE which should be handled by trained staff only.
Storage:	4 °C,-20 °C
Storage Comment:	Short term: 4°C Long term: Add glycerol (40-50%) -20°C.

Images



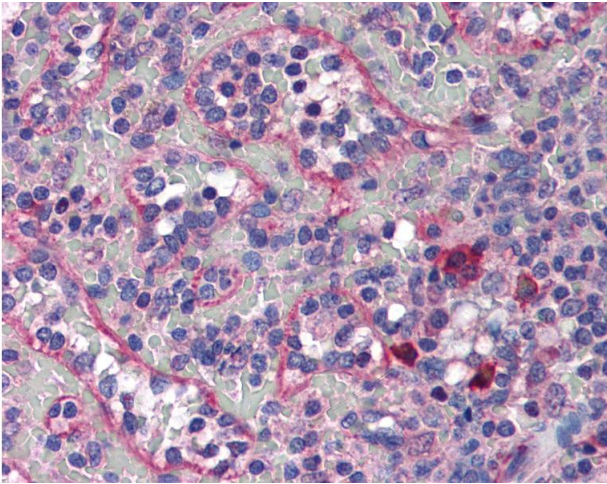
Immunohistochemistry (Paraffin-embedded Sections)

Image 1. Human Spleen (formalin-fixed, paraffin-embedded) stained with COPB2 antibody ABIN337394 at 5 ug/ml followed by biotinylated goat anti-rabbit IgG secondary antibody ABIN481713, alkaline phosphatase-streptavidin and chromogen.



Immunohistochemistry (Formalin-fixed Paraffin-embedded Sections)

Image 2. Human Placenta: Formalin-Fixed, Paraffin-Embedded (FFPE)



Immunohistochemistry

Image 3. Anti-COPB2 antibody IHC of human spleen. Immunohistochemistry of formalin-fixed, paraffin-embedded tissue after heat-induced antigen retrieval. Antibody concentration 5 ug/ml.