

Datasheet for ABIN337396

anti-Caspase 6 antibody (Cleavage Site)



[Go to Product page](#)

2 Images

Overview

| | |
|----------------------|---|
| Quantity: | 50 µL |
| Target: | Caspase 6 (CASP6) |
| Binding Specificity: | Cleavage Site |
| Reactivity: | Human, Mouse, Rabbit |
| Host: | Rabbit |
| Clonality: | Polyclonal |
| Conjugate: | This Caspase 6 antibody is un-conjugated |
| Application: | Western Blotting (WB), Immunohistochemistry (IHC), ELISA, Immunohistochemistry (Paraffin-embedded Sections) (IHC (p)) |

Product Details

| | |
|---------------|---|
| Brand: | IHC-plus™ |
| Immunogen: | Synthetic peptide KLH coupled corresponding to residues surrounding the cleavage site of caspase-6. Type of Immunogen: Synthetic peptide |
| Isotype: | IgG |
| Specificity: | Caspase-6 Antibody recognizes endogenous levels of both full length caspase-6 (35kD) and the small subunit of caspase-6 resulting from cleavage at Asp194 (15kD). This antibody does not recognize other caspases. Recognizes human, mouse, rabbit. |
| Purification: | Protein A purified |

Target Details

| | |
|-------------------|--|
| Target: | Caspase 6 (CASP6) |
| Alternative Name: | CASP6 / Caspase 6 (CASP6 Products) |
| Background: | Name/Gene ID: CASP6 Subfamily: Cysteine C14 Family: Protease Synonyms: CASP6, Apoptotic protease Mch-2, Caspase 6, CASP-6, Caspase-6, Mch-2, MCH2 |
| Gene ID: | 839 |
| UniProt: | P55212 |
| Pathways: | Apoptosis, Caspase Cascade in Apoptosis |

Application Details

| | |
|--------------------|--|
| Application Notes: | Approved: ELISA, IHC, IHC-P (5 µg/mL), WB (1:1000) Usage: Immunohistochemistry: This antibody was validated for use in immunohistochemistry on a panel of 21 formalin-fixed, paraffin-embedded (FFPE) human tissues after heat induced antigen retrieval in pH 6.0 citrate buffer. After incubation with the primary antibody, slides were incubated with biotinylated secondary antibody, followed by alkaline phosphatase-streptavidin and chromogen. The stained slides were evaluated by a pathologist to confirm staining specificity. The optimal working concentration for this antibody was determined to be 5 µg/mL. |
| Comment: | Target Species of Antibody: Mouse |
| Restrictions: | For Research Use only |

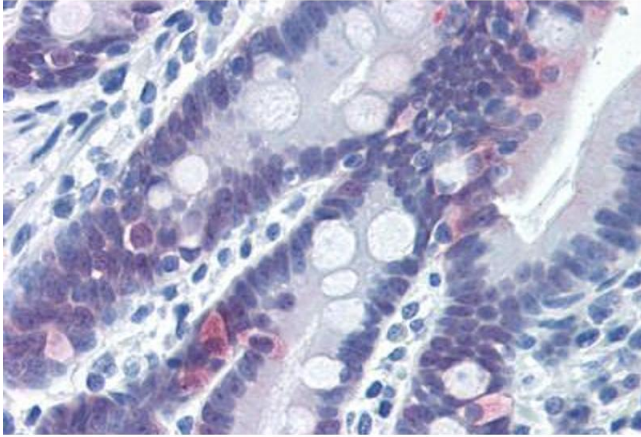
Handling

| | |
|------------------|---|
| Format: | Liquid |
| Concentration: | Lot specific |
| Buffer: | 10 mM HEPES, pH 7.5, 150 mM sodium chloride, 0.1 mg/mL BSA, 50 % glycerol. No preservative added. |
| Preservative: | Without preservative |
| Handling Advice: | Avoid repeated freezing and thawing. |
| Storage: | 4 °C, -20 °C |

Handling

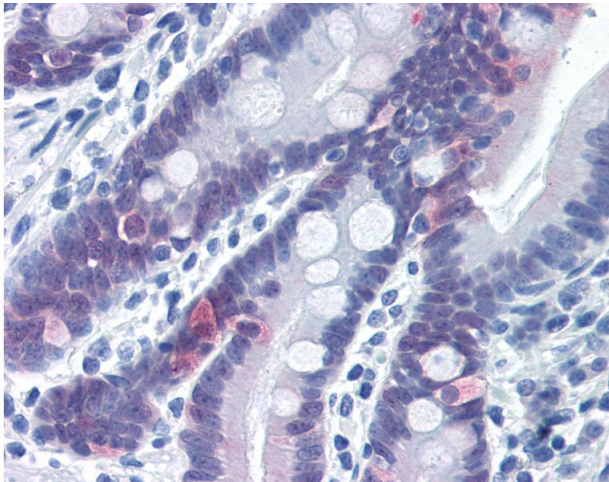
Storage Comment: 4°C or -20°C, Avoid freeze-thaw cycles.

Images



Immunohistochemistry (Paraffin-embedded Sections)

Image 1. Human Small Intestine (formalin-fixed, paraffin-embedded) stained with CASP6 antibody ABIN337396 at 5 ug/ml followed by biotinylated goat anti-rabbit IgG secondary antibody ABIN481713, alkaline phosphatase-streptavidin and chromogen.



Immunohistochemistry

Image 2. Anti-Caspase 6 antibody IHC of human small intestine. Immunohistochemistry of formalin-fixed, paraffin-embedded tissue after heat-induced antigen retrieval. Antibody concentration 5 ug/ml.